

## Orangeville

The first modern day settlers arrived in 1877, Erastus Curtis, and his two sons, William B. and Erastus Jr. They located a farm and built a log cabin on Cottonwood Creek about one and one-fourth miles northwest of the present town of Orangeville. Mr. Curtis returned to Sanpete for the coming winter, while his sons remained on the new farm. Mr. Curtis returned the following summer with the rest of his family. Abundant ground available for farming and the Cottonwood Creek flowing with the water needed for irrigation attracted numerous settlers during the next few years.

Canals were dug to bring the free-flowing water from Cottonwood Creek to the new farms. The Blue Cut canal, the Clipper, the Mammoth, the Great Western and the last canal dug is known as the CCH Bureau canal, designed to carry water north to the Huntington North reservoir.

The town site was first surveyed in 1879. In August, 1882, the new settlement was given the name of Orangeville in honor of one of the early settlers along Cottonwood Creek, Orange Seely. Orangeville was granted the rights of incorporation on June 6, 1901, with the following men appointed as the Town Board: A.C. Van Buren, President; S.P. Snow, J.B. Crawford, H.M. Reid, and C.C. Stilson as Trustees; O.J. Sitterud, Clerk; H.M. Reid, Treasurer; and George Fox, Town Attorney. The population was 623.

Orangeville's first store was built and operated by John K. Reid. He was appointed as the first Postmaster in 1879. The post office was located in his store. Samuel Jewkes was the owner of the first grist mill, and was also the first school teacher. By the year 1890, the population of Orangeville was 353. In 1893, work was started on the new Orangeville roller mill. The generation of electricity was added to the water wheel on the mill in 1907, and both the mill and the generator continued in operation until the late 1920's.

Today, Orangeville is the home to Emery Telcom, Industrial Electric, and a modern grocery store named the "Food Ranch." Orangeville has been a very progressive community instrumental in providing up-to-date services for the residents.

The water flowing in Cottonwood Creek was the attraction that brought the settlers to this town site. The water brought life to the area on both the north and the south of Cottonwood Creek. The water provided the power to generate electricity, and furnished culinary water to the residents. Today a modern filter system that provides culinary water to the city is operated by Castle Valley Special Service District; they also maintain the secondary water system and the sewer system.

Orangeville became a third-class city in March, 1921, governed by a mayor and five members of the city council, all elected for terms of four years. Law enforcement is furnished by the Emery County Sheriff's Department.

The water bringing life to the valley flows east from the skyline country where the elevation is near 10,000 ft. through numerous canyons and small streams. The water is collected into several small reservoirs at or near 8,500 ft. elevation. It eventually enters Joe's Valley Reservoir (elevation 7,200 ft.) through the Dragon, Swasey Creek, Seely Creek, Littles Creek and Lowry Water. The Joe's Valley Dam was constructed in 1963-1965 by the U.S. Bureau of Reclamation to provide supplemental water to 18,775 acres of farm ground. The height of the dam is 192 ft. and the capacity is 62,460 acre ft. of water.

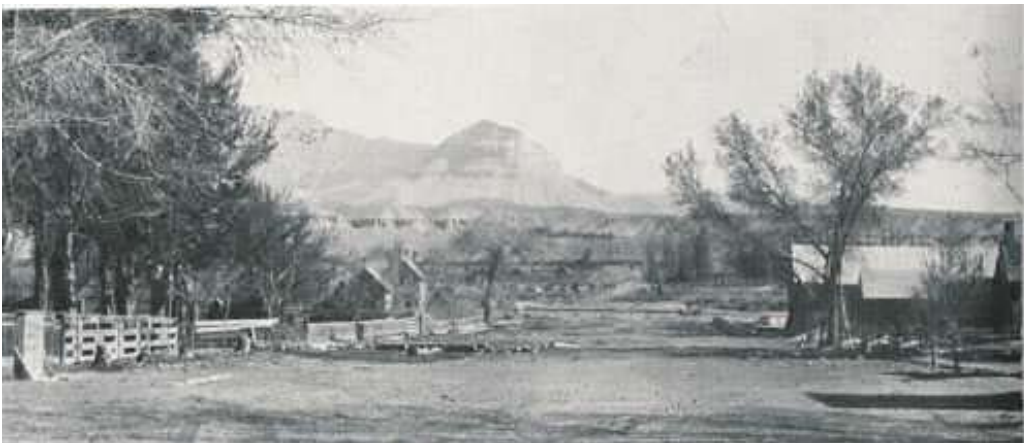
The geological formation of the area now occupied by Joe's Valley Reservoir was the result of a downward thrust of the surface of the earth, a drop of 1,300 to 1,800 ft. created the graben and the future dam site came as a result of the water flowing east towards the valley below. Several million years later, the dam was placed across the head of Straight Canyon and now controls the flow of water through the canyon.

Planning for the Orangeville-Ephraim road, U-29 began in 1909 and the celebration of its completion was held August 16-18 of 1921, with a gathering of 3,000 people, at the large meadow known as the Horse Shoe Flat, a short distance east of the Skyline Drive road.

Coal has played a very important role in our valley. Several mines have produced coal from Horn Mountain, Trail Mountain and East Mountain. The coal has been a buried treasure; however, all too often it is associated with tragedy. Three miles west on U-29 is located a monument in honor of the 27 coal miners who lost their lives in the Wilberg fire in 1984. There have been many others who have lost their lives in the coal mines.

The Manti-LaSal National Forest provides grazing for numerous cattle and sheep and has proved lumber, fire wood, and recreation for the residents of Orangeville.

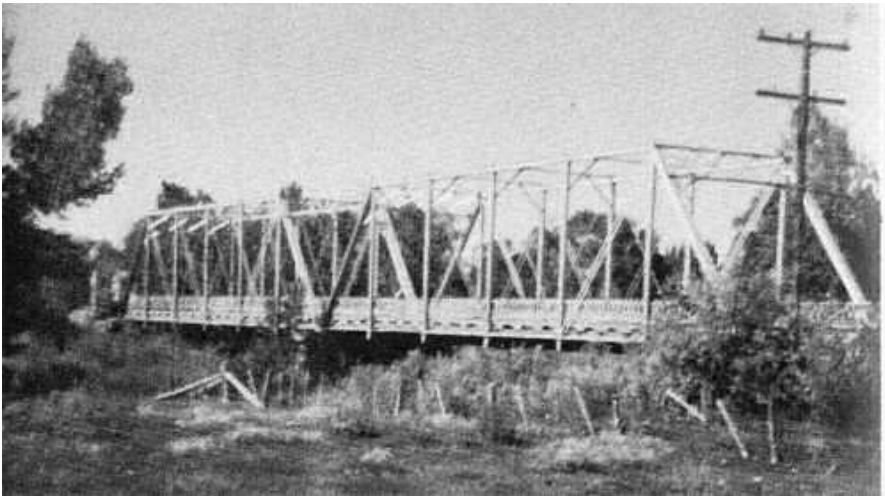
Many of the residents of today are descendants of those early pioneers. Their efforts were not in vain. They came to a barren land, they plowed, planted and harvested. Today we live in a peaceful, relaxed community, and enjoy the efforts of our ancestors.



Orangeville -Main Street (note absence of bridge over canal)



Orangeville - Jewkes Grist Mill



Orangeville - Old one-lane bridge (torn down)



Orangeville - Skyline Drive - reunion of Emery & Sanpete county settlers - Celebration of Orangeville-Ephraim Road 1921



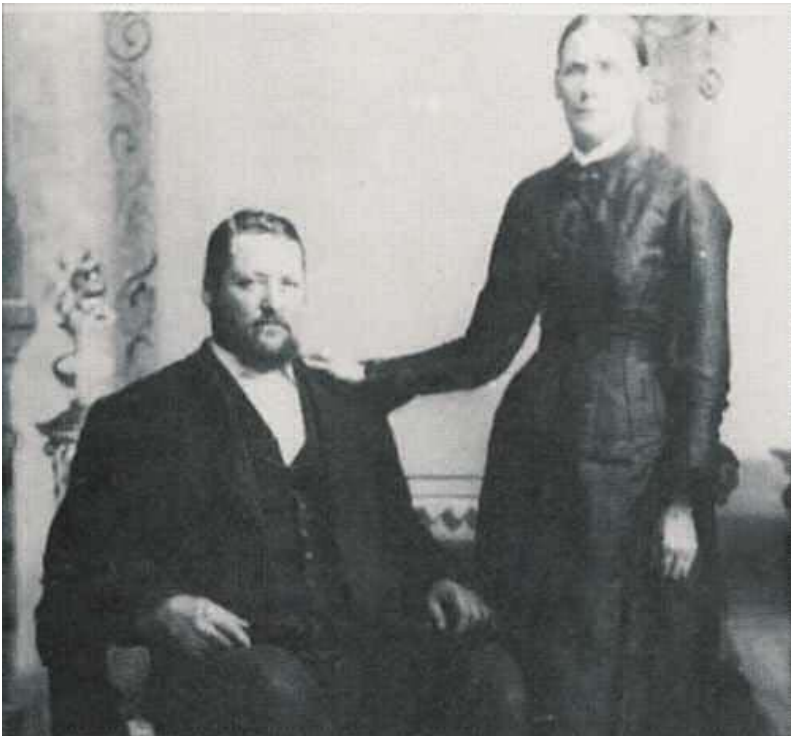
Orangeville - Young Women's church activity 1901



Orangeville - Old fashioned sleigh ride



Orangeville - Baseball Team 1886



Orangeville - Orange Seely and wife (town was named after this man)



Orangeville - Early students in front of school built in 1902