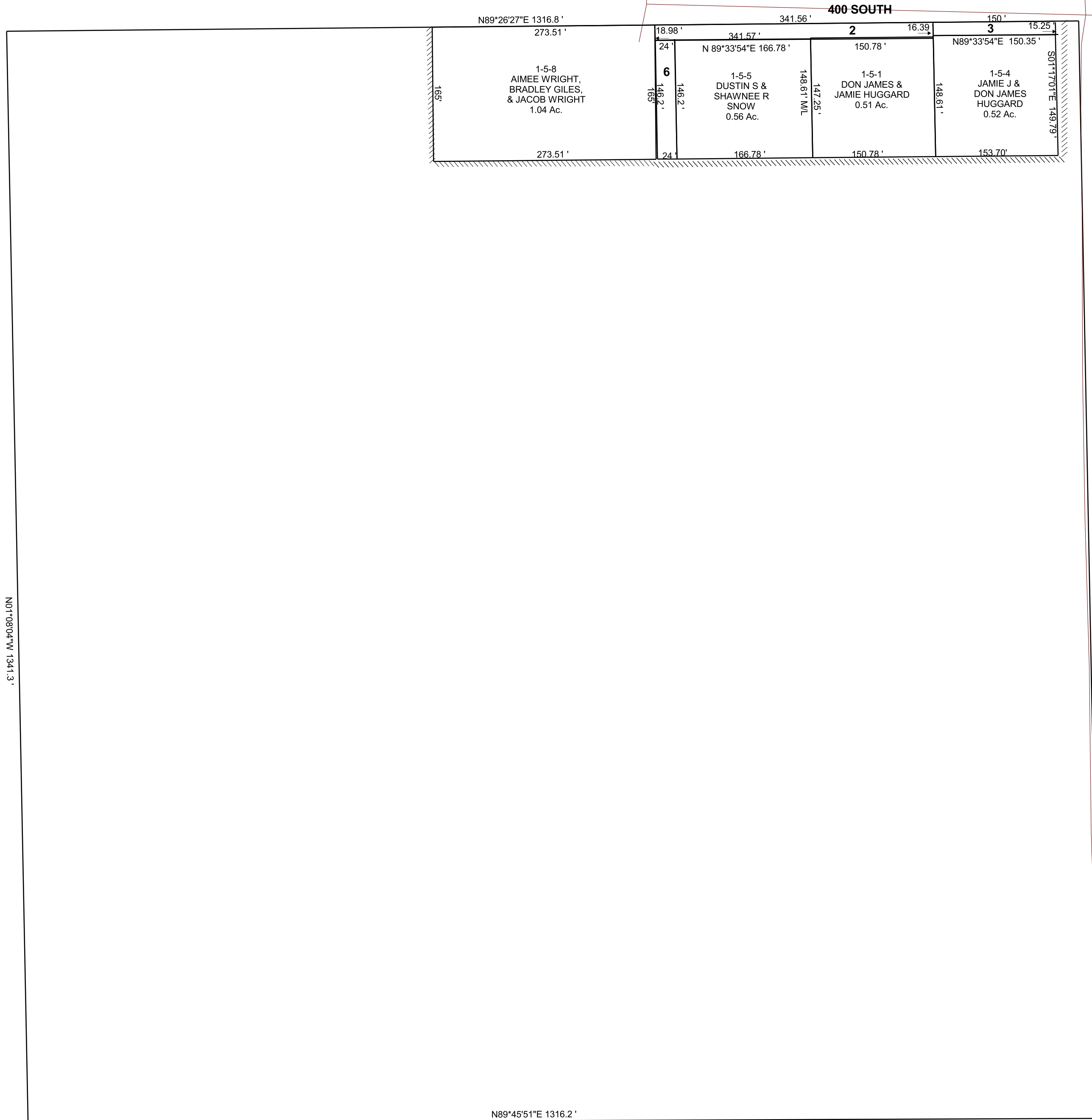


NE/4 NW/4 ,SECTION 3, T 19 S, R 8 E S.L.B. & M.

THIS PLAT IS MADE SOLELY FOR THE PURPOSE
OF ASSISTING IN LOCATING THE LAND, AND
THE RECORDER ASSUMES NO LIABILITY FOR
VARIATIONS, IF ANY, WITH AN ACTUAL SURVEY.



1-5-2
CASTLE DALE CITY
0.14 Ac.

1-5-3
CASTLE DALE CITY
0.05 Ac.

1-5-6
DON JAMES &
JAMIE
HUGGARD
0.08 Ac.

N01°08'04\"/>

N01°06'29\"/>