

CASTLE DALE

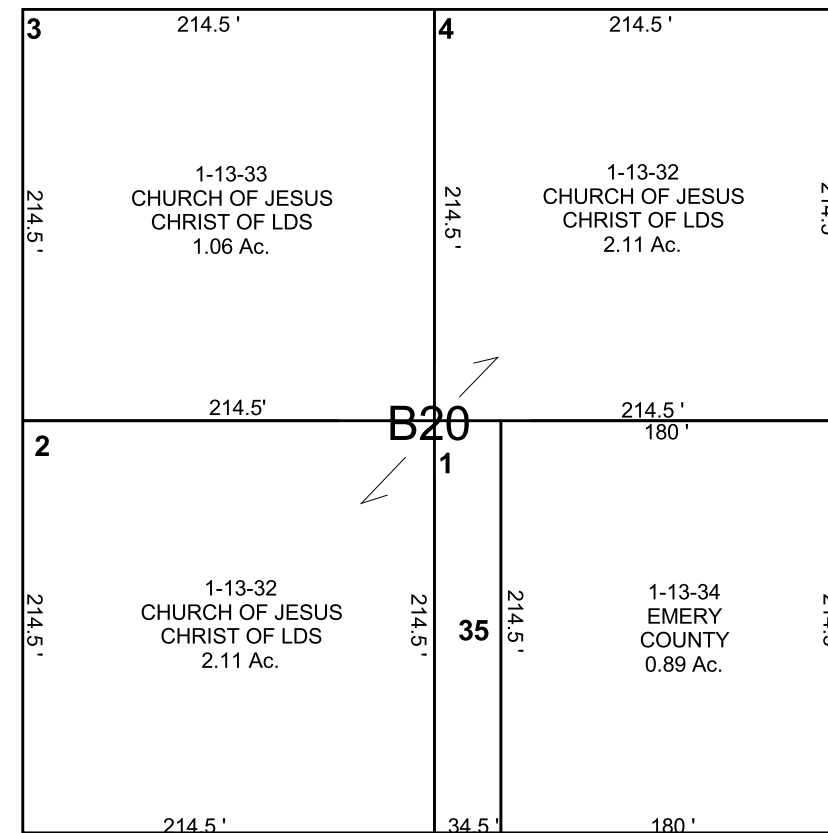
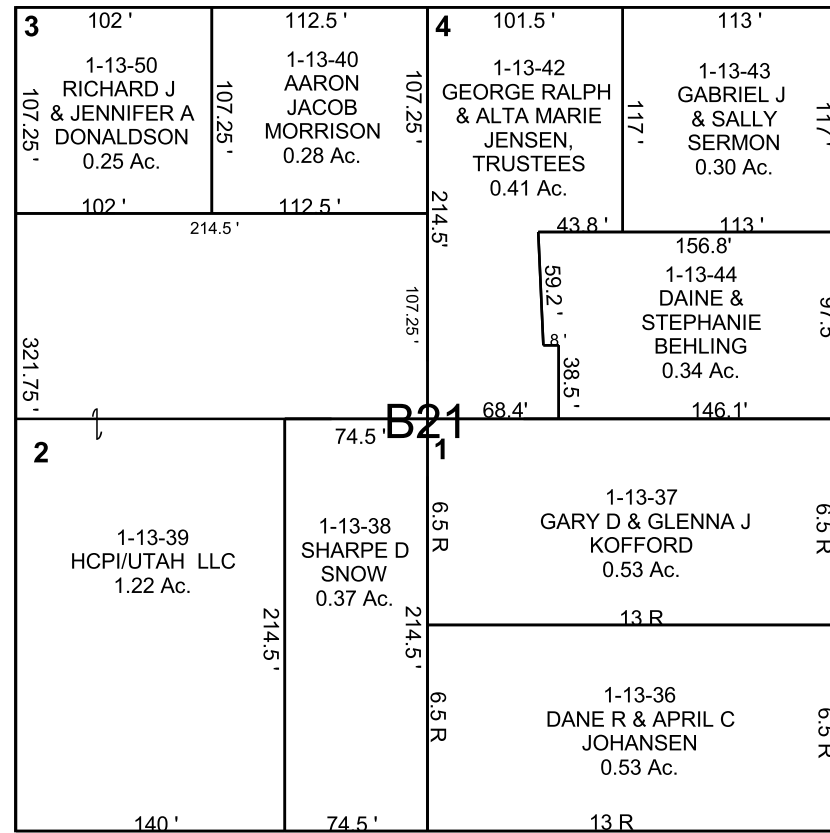
SW/4 SECTION 34, T 18 S, R 08 E S.L.B. & M.

BOOK 1 PAGE 13
SCALE: 1" = 100'
NOVEMBER 8, 2018

THIS PLAT IS MADE SOLELY FOR THE PURPOSE OF ASSISTING IN LOCATING THE LAND, AND THE RECORDER ASSUMES NO LIABILITY FOR VARIATIONS, IF ANY, WITH AN ACTUAL SURVEY.

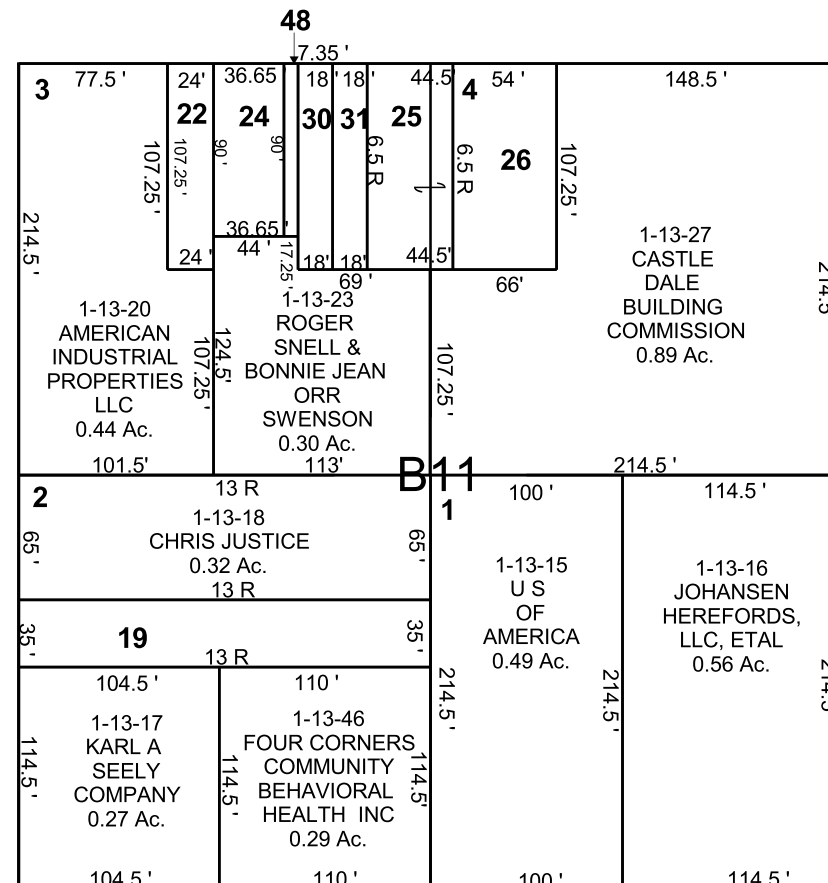
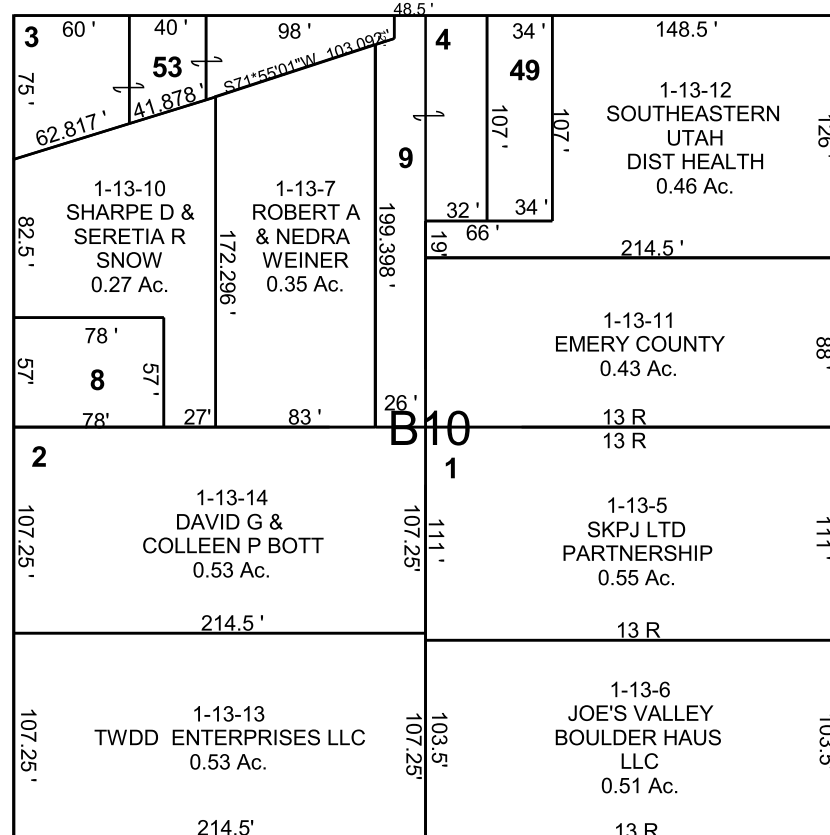


40 LINE



- 1-13-1 ANDREW LARSEN 0.24 Ac.
- 1-13-8 WILLIAM B & RALINE ROWLEY 0.10 Ac.
- 1-13-9 TYLER JEFFS INSURANCE, INC 0.20 Ac.
- 1-13-19 KATHY NIELSON, TRUSTEE ETAL 0.17 Ac.
- 1-13-22 6M MANAGEMENT, LLC 0.06 Ac.
- 1-13-24 ABJ LLC 0.08 Ac.
- 1-13-25 ROGER SNELL & BONNIE JEAN SWENSON 0.11 Ac.
- 1-13-26 ROGER SNELL SWENSON, ETAL 0.13 Ac.
- 1-13-30 RONALD B & PATRICIA C SANDERS, CO-TRUSTEES 0.04 Ac.
- 1-13-31 DAVID & TERESA PLATT 0.04 Ac.
- 1-13-35 CHURCH OF JESUS CHRIST OF LDS 0.17 Ac.
- 1-13-48 PATRICIA C SANDERS TRUSTEE 0.02 Ac.
- 1-13-49 TYLER & TIFFANY JEFFS 0.08 Ac.
- 1-13-51 KAREN HUNTSMAN, ETAL 0.13 Ac.
- 1-13-53 STATE ROAD COMMISSION 0.20 Ac.

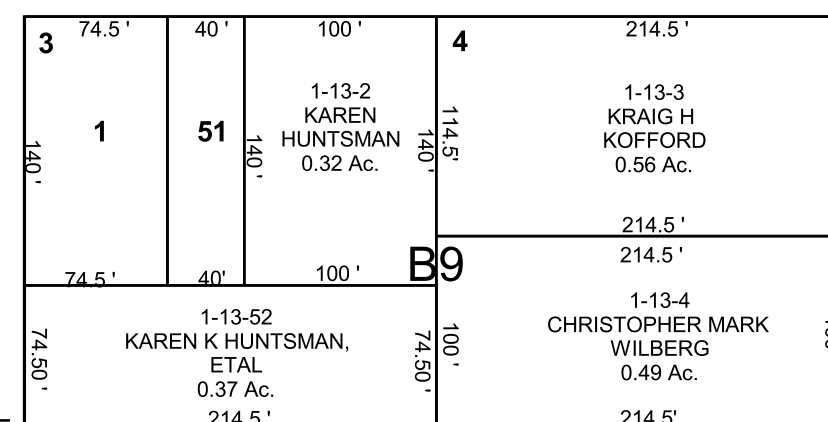
MAIN STREET



CENTER STREET

SEC. 34

100 SOUTH STREET



40 LINE

40 LINE