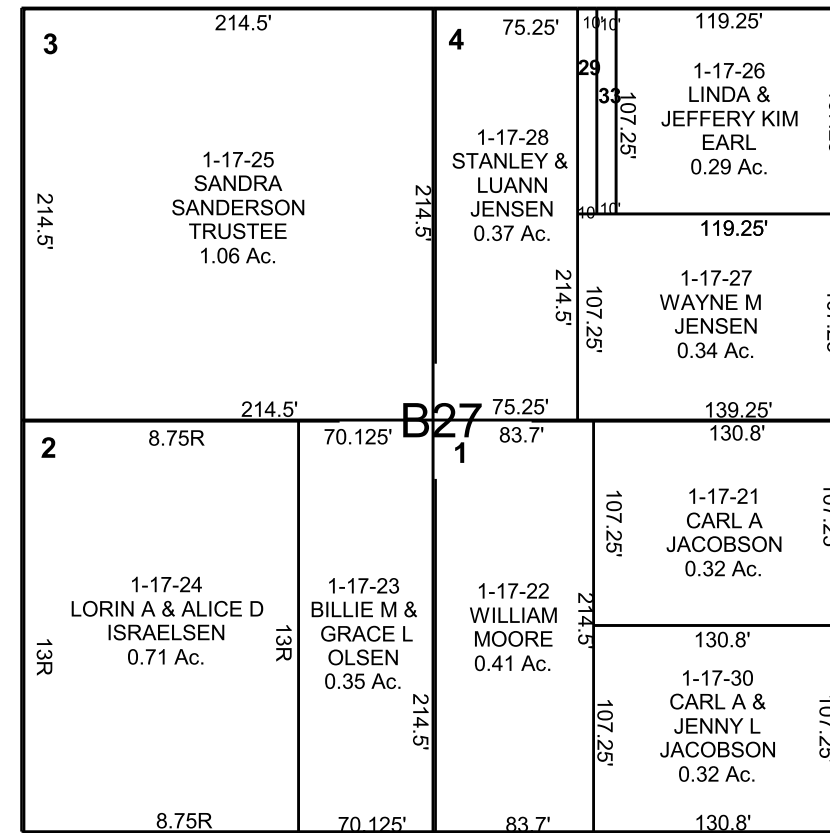
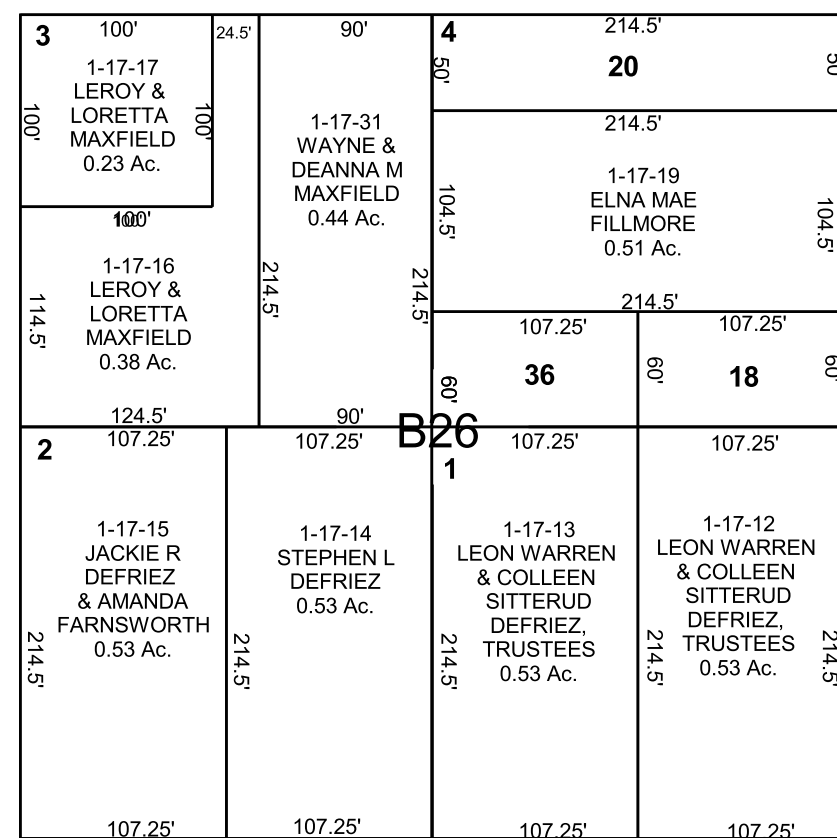


CASTLE DALE

SW/4 NE/4 SECTION 33, T 18 S, R 08 E S.L.B. & M.

THIS PLAT IS MADE SOLELY FOR THE PURPOSE OF ASSISTING IN LOCATING THE LAND, AND THE RECORDER ASSUMES NO LIABILITY FOR VARIATIONS, IF ANY, WITH AN ACTUAL SURVEY.



- 1-17-18  
KIM WALLACE &  
ROBYN KAY  
CURTIS  
0.15 Ac.
- 1-17-20  
BROOKE E RILEY  
0.25 Ac.
- 1-17-29  
STANLEY & LUANN  
JENSEN  
0.02 Ac.
- 1-17-33  
STANLEY GEORGE &  
LUANN H JENSEN  
0.02 Ac.
- 1-17-36  
LEON WARREN &  
COLLEEN SITTERUD  
DEFRIEZ, TRUSTEES  
0.15 Ac.

100 NORTH

