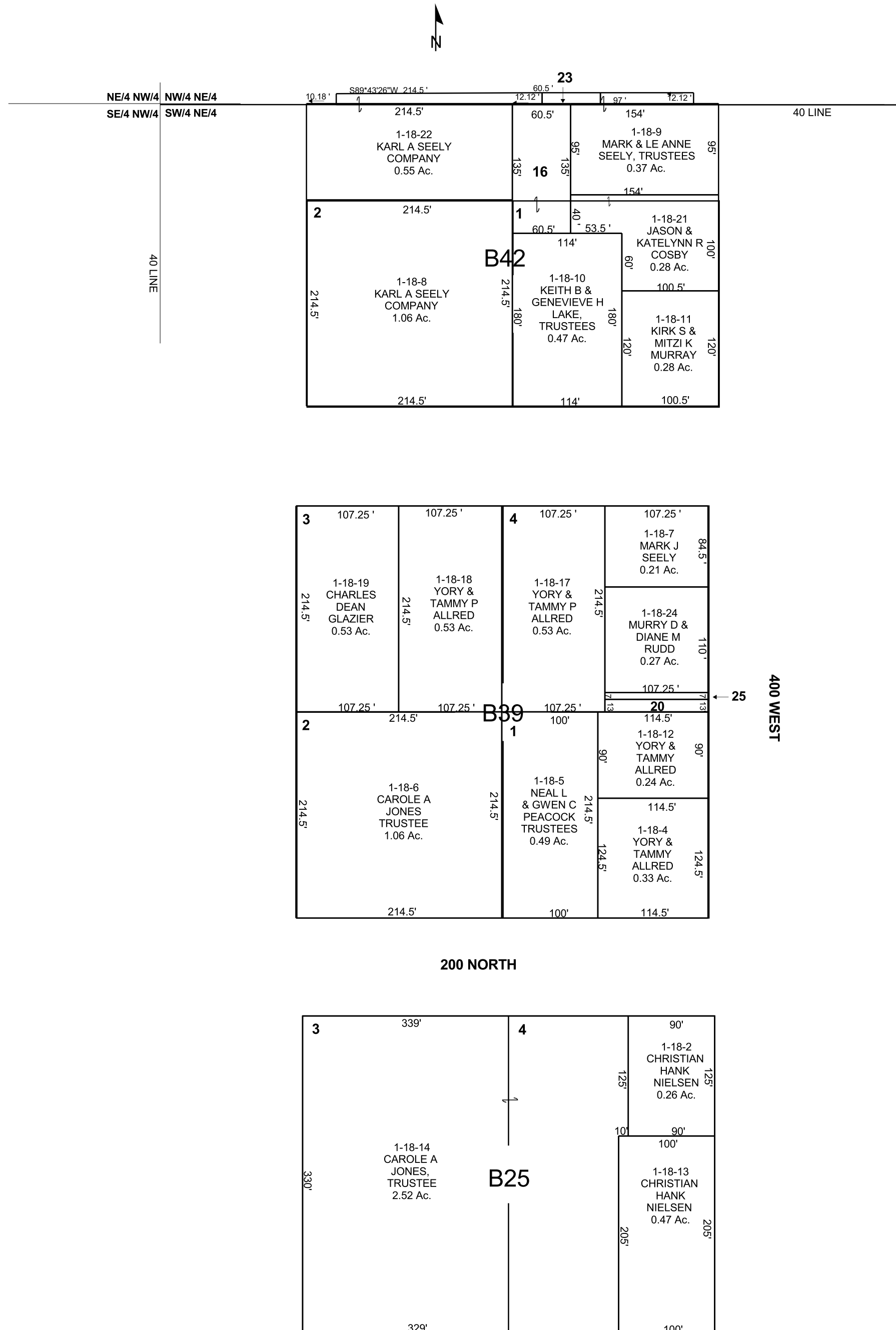


CASTLE DALE

SW/4 NE/4 SECTION 33, T 18 S, R 08 E S.L.B. & M.

THIS PLAT IS MADE SOLELY FOR THE PURPOSE OF ASSISTING IN LOCATING THE LAND, AND THE RECORDER ASSUMES NO LIABILITY FOR VARIATIONS, IF ANY, WITH AN ACTUAL SURVEY.



1-18-16
 KEITH B &
 GENEVIEVE
 LAKE,
 TRUSTEES
 0.21 Ac.

1-18-20
 YORY &
 TAMMY
 ALLRED
 0.03 Ac.

1-18-23
 KEITH B &
 GENEVIEVE H
 LAKE,
 TRUSTEES
 0.02 Ac.

1-18-25
 MURRY D &
 DIANE M
 RUDD
 0.02 Ac.