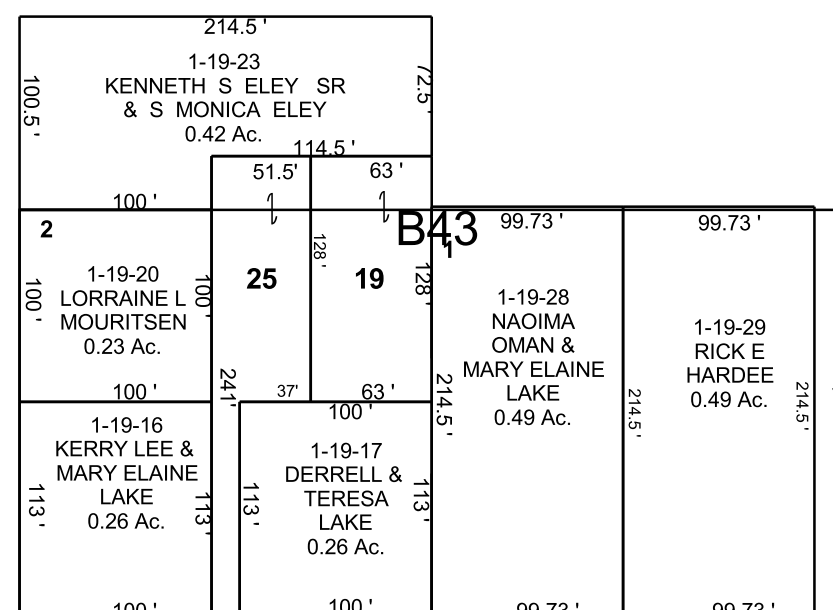


CASTLE DALE

SW/4 NE/4 SECTION 33, T 18 S, R 08 E S.L.B. & M.

THIS PLAT IS MADE SOLELY FOR THE PURPOSE OF ASSISTING IN LOCATING THE LAND, AND THE RECORDER ASSUMES NO LIABILITY FOR VARIATIONS, IF ANY, WITH AN ACTUAL SURVEY.



SEE PAGE 3A

NW/4 NE/4
SW/4 NE/4 SE/4 NE/4

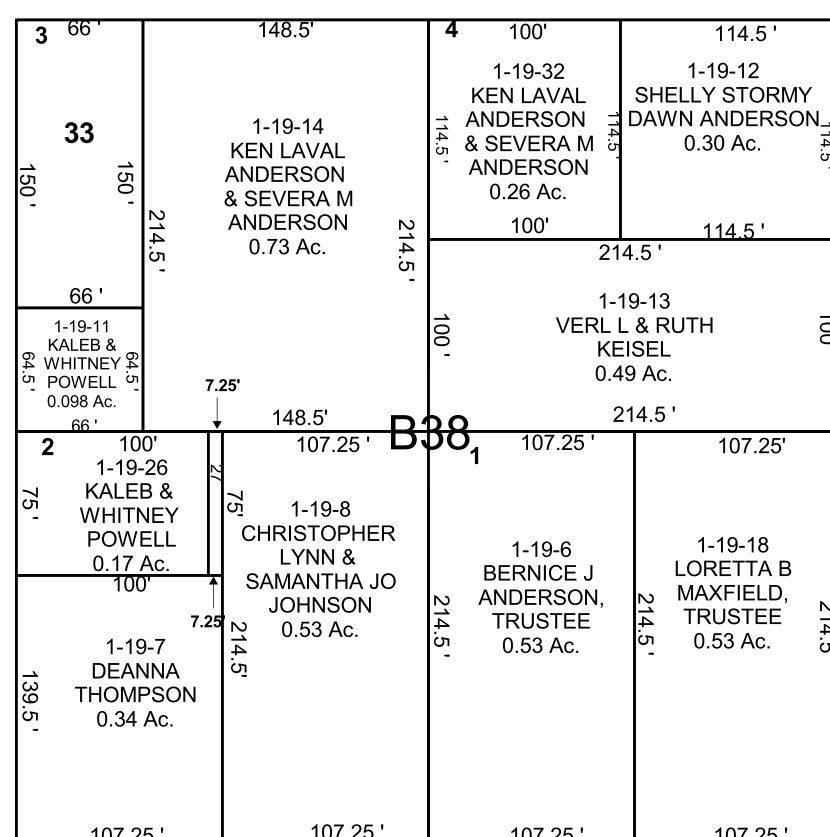
1-19-19
DERELL &
TERESA
LAKE
0.19 Ac.

1-19-25
KERRY LEE
& MARY
ELAINE
LAKE
0.19 Ac.

1-19-27
KALEB &
WHITNEY
POWELL
0.01 Ac.

1-19-33
HOMESALES,
INC
0.23 Ac.

300 NORTH



300 WEST

