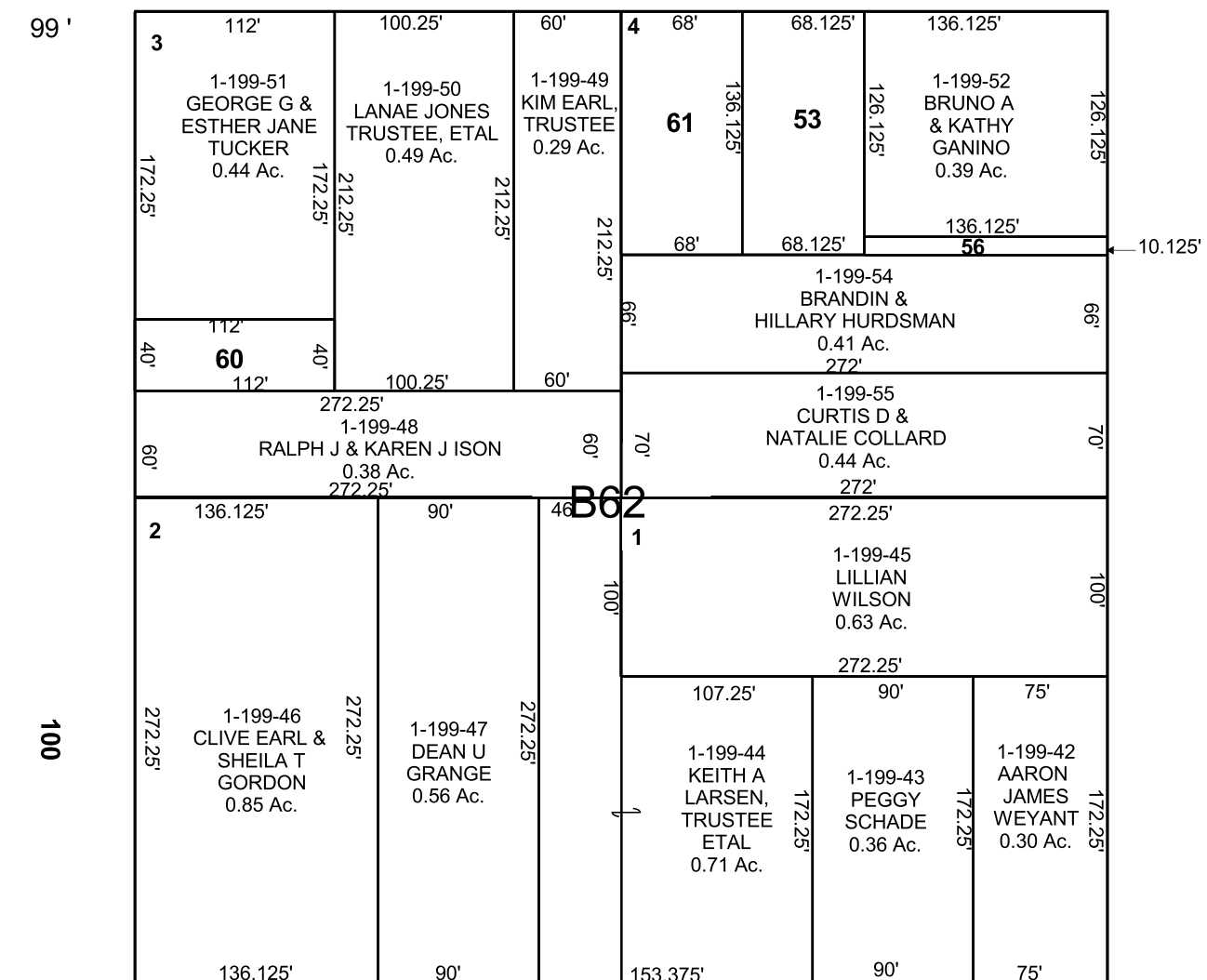
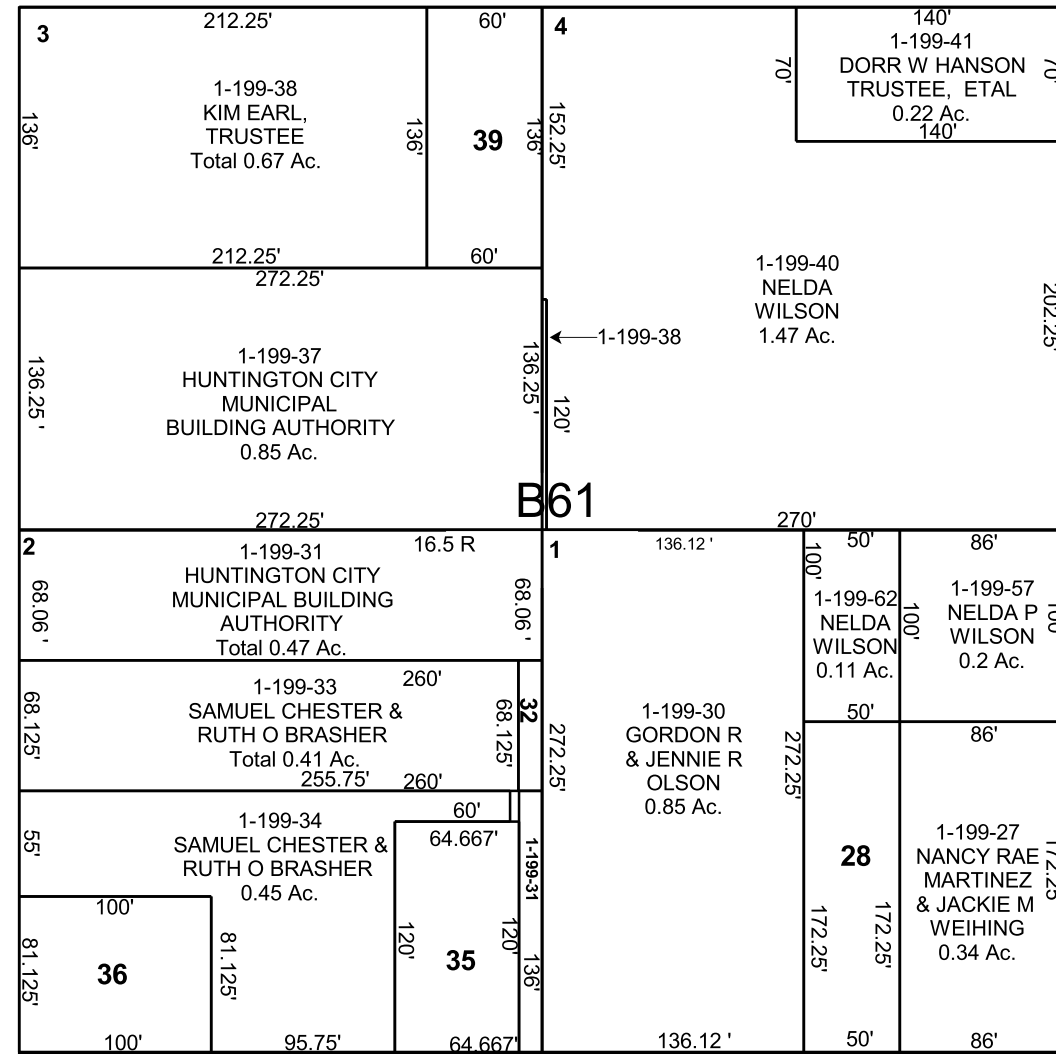


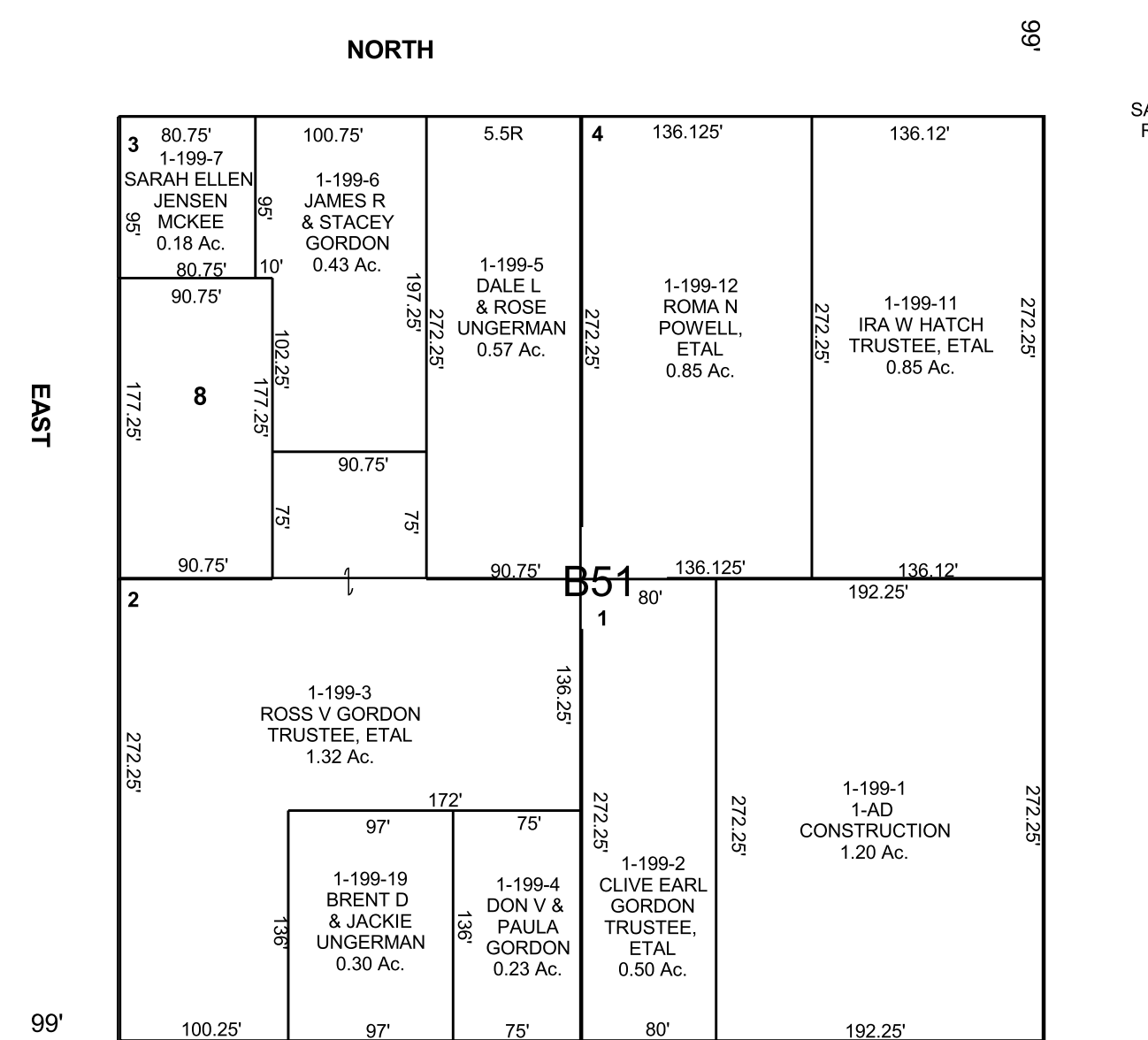
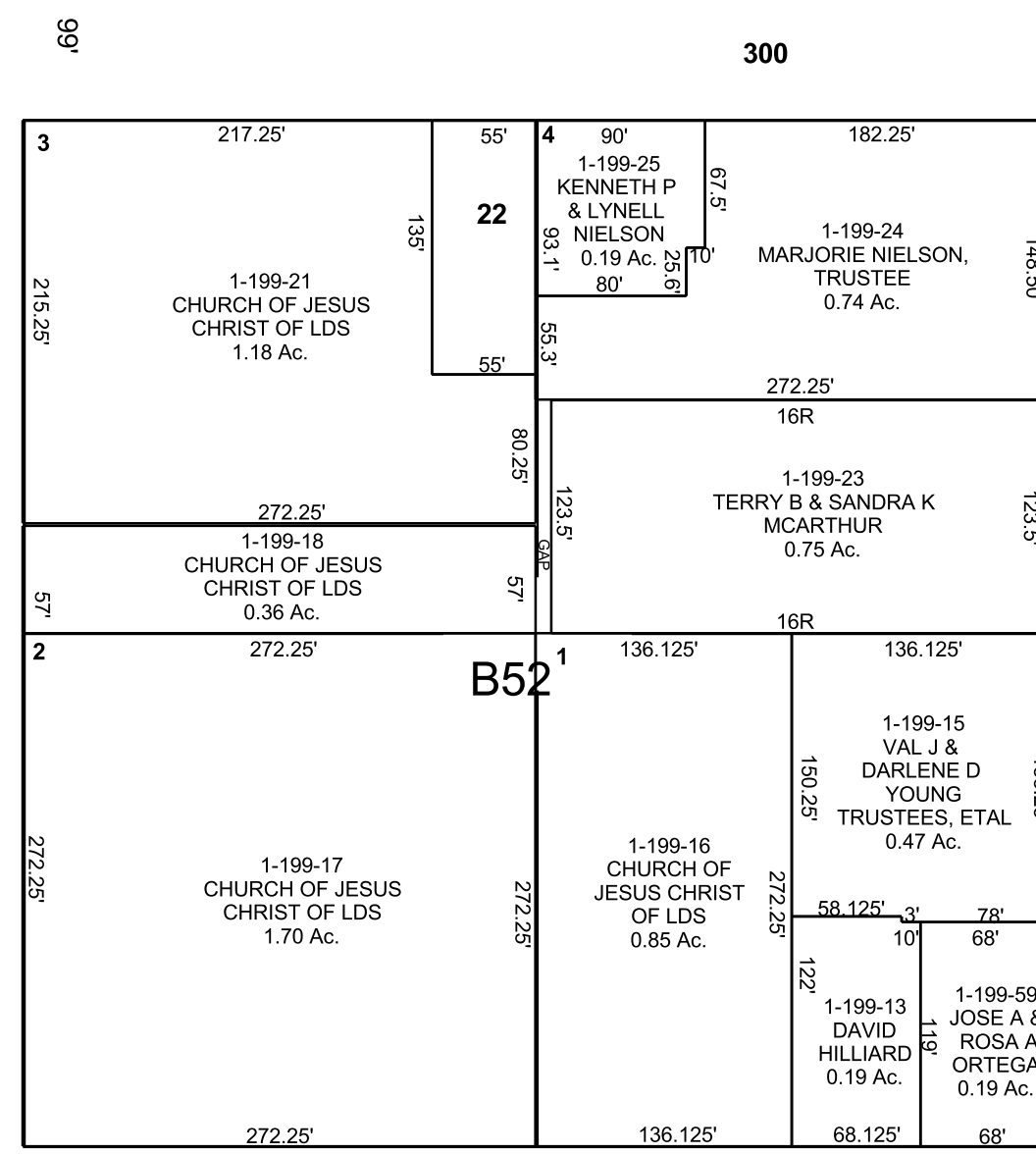
HUNTINGTON

SW/4 NW/4 SECTION 19, T 17 S, R 09 E S.L.B. & M.

THIS PLAT IS MADE SOLELY FOR THE PURPOSE OF ASSISTING IN LOCATING THE LAND, AND THE RECORDER ASSUMES NO LIABILITY FOR VARIATIONS, IF ANY, WITH AN ACTUAL SURVEY.



- 1-199-8 MAVOREEN R ANDERSON, TRUSTEE ETAL 0.37 Ac.
- 1-199-22 MAYNARD W & DEBARAHA L MURRAY 0.17 Ac.
- 1-199-28 THOMAS & LILIANA HERNANDEZ 0.20 Ac.
- 1-199-32 EMERY COUNTY 0.02 Ac.
- 1-199-35 MAUREEN L MCARTHUR 0.18 Ac.
- 1-199-36 SAMUEL CHESTER & RUTH O BRASHER 0.19 Ac.
- 1-199-39 KIM EARL, PRESIDENT ETAL 0.19 Ac.
- 1-199-53 PAULA JEAN MANCHESTER, PER REP, ETAL 0.21 Ac.
- 1-199-56 BRANDIN & HILLARY HURDSMAN 0.03 Ac.
- 1-199-60 RALPH J & KAREN J ISON 0.10 Ac.
- 1-199-61 THOMAS & ANNETTE GRIMM 0.21 Ac.



W1/4 COR.