

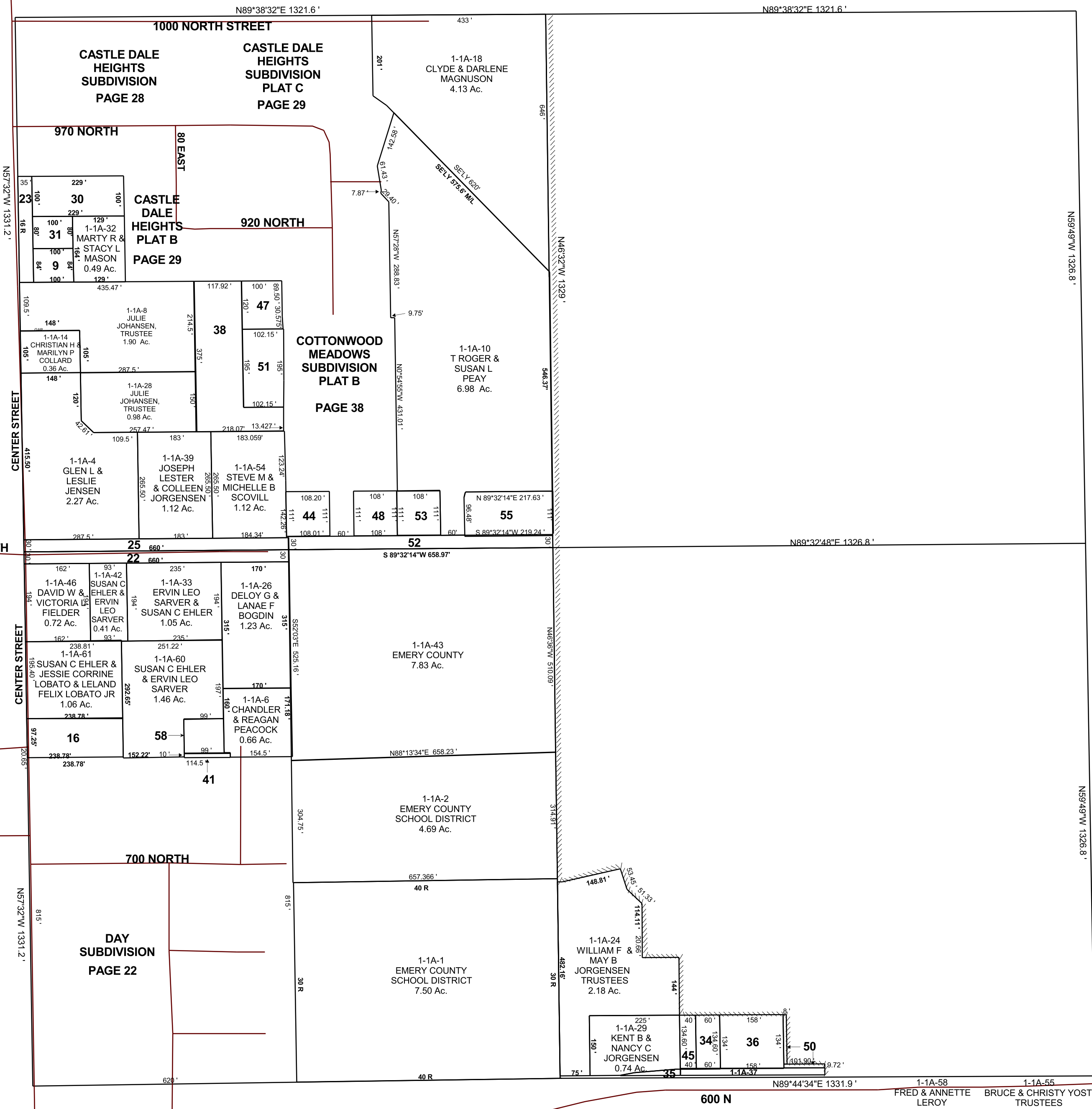
CASTLE DALE

SW/4 SECTION 27, T 18 S, R 08 E S.L.B. & M.

BOOK 1 PAGE 1A
SCALE: 1" = 200'
JULY 28, 2022

EX

THIS PLAT IS MADE SOLELY FOR THE PURPOSE OF ASSISTING IN LOCATING THE LAND, AND THE RECORDER ASSUMES NO LIABILITY FOR VARIATIONS, IF ANY, WITH AN ACTUAL SURVEY.



- 1-1A-7
ZORA J FIELDER,
TRUSTEE
0.32 Ac.
- 1-1A-9
EMERY COUNTY
0.19 Ac.
- 1-1A-16
COREY E
BLUEMEL
0.53 Ac.
- 1-1A-22
CASTLE DALE CITY
0.45 Ac.
- 1-1A-23
CASTLE DALE CITY
0.21 Ac.
- 1-1A-25
CASTLE DALE CITY
0.45 Ac.
- 1-1A-30
JACK R & LORIE A
ROGERS TRUSTEES
0.53 AC
- 1-1A-31
AARON L ISAACSON
0.18 Ac.
- 1-1A-32
MARTY R & STACY L
MASON
0.49 Ac.
- 1-1A-34
KENT B & NANCY B
JORGENSEN
0.19 Ac.
- 1-1A-35
CASTLE DALE CITY
0.034 Ac.
- 1-1A-36
BLAKE BROWN
0.49 Ac.
- 1-1A-37
CASTLE DALE CITY
0.14 Ac.
- 1-1A-38
CHARLES V
& AMANDA M
LAWRENCE
1.14 Ac.
- 1-1A-41
FRED LEROY
0.026 Ac.
- 1-1A-44
STEVEN M & ALISON M
DALEY
0.28 Ac.
- 1-1A-45
KENT B & NANCY C
JORGENSEN
0.12 Ac.
- 1-1A-47
BRODY & ANYA
LEROY
0.28 Ac.
- 1-1A-48
RUSSELL D TAYLOR &
MAGALY R AMORES
0.28 Ac.
- 1-1A-50
MAGNUSON LIVESTOCK,
LLC
0.05 Ac.
- 1-1A-51
CHRISTOPHER L &
SAMANTHA J
JOHNSON
0.46 Ac.
- 1-1A-52
CASTLE DALE CITY
0.45 M/L Ac.
- 1-1A-53
RUSSELL TAYLOR
0.28 Ac.

1-1A
27-18S-08E