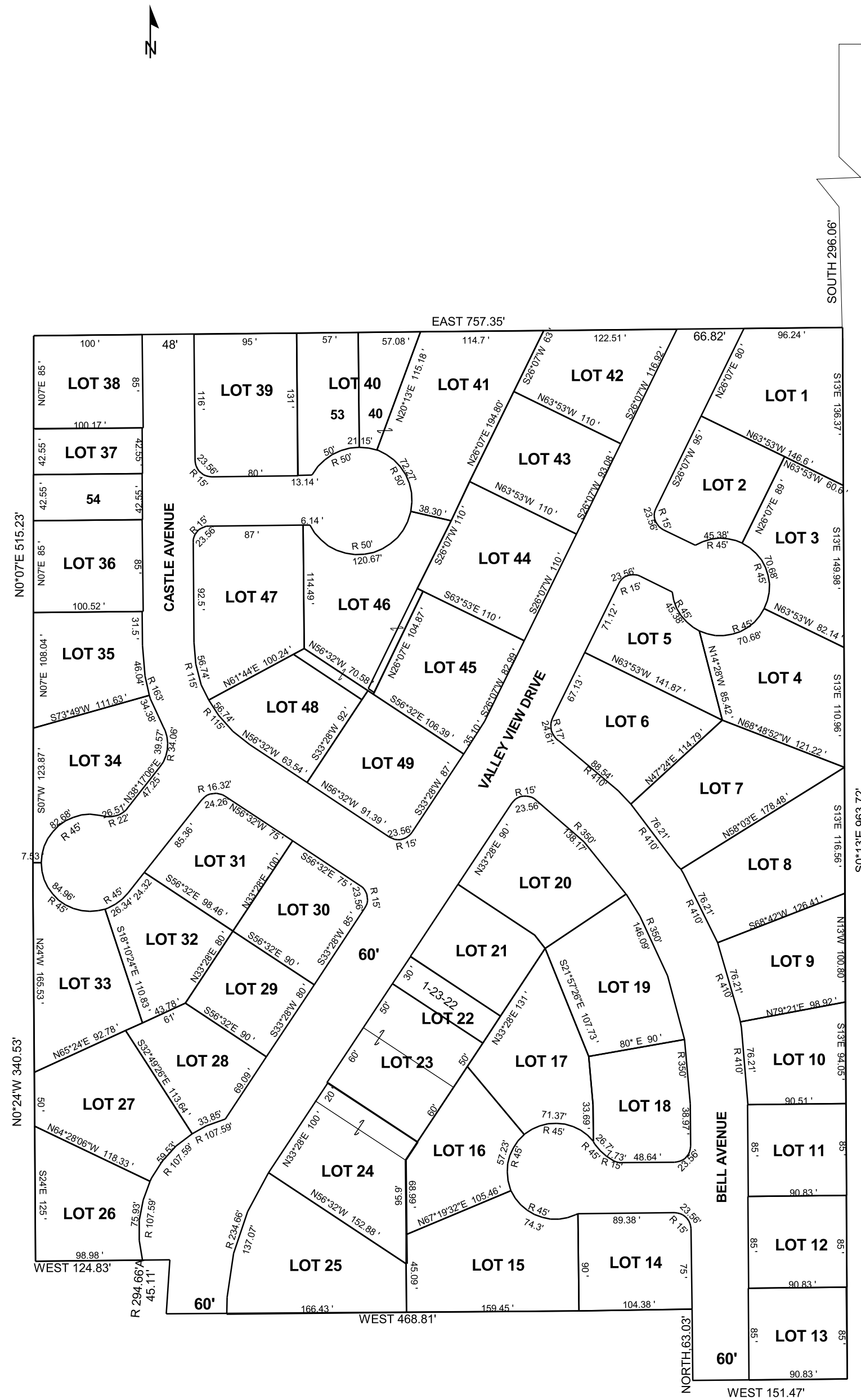


CASTLE DALE  
NW/4 SE/4 SECTION 28, T 18 S, R 08 E S.L.B. & M.  
VALLEY VIEW SUBDIVISION

THIS PLAT IS MADE SOLELY FOR THE PURPOSE OF ASSISTING IN LOCATING THE LAND, AND THE RECORDER ASSUMES NO LIABILITY FOR VARIATIONS, IF ANY, WITH AN ACTUAL SURVEY.

1-23-1 CHARLES F DAVIS 0.28 Ac.	1-23-18 ARLENE VUKSINICK 0.21 Ac.	1-23-35 LEE MONROE MAGNUSON, ETAL 0.22 Ac.
1-23-2 VINCENT B JEFFERIES 0.20 Ac.	1-23-19 BARBARA L & RICHARD B HYMAS 0.27 Ac.	1-23-36 RODNEY K & JODI K MAGNUSON, ETAL 0.20 Ac.
1-23-3 JOSEPH F & LANAE J JORGENSEN 0.25 Ac.	1-23-20 JONATHON & WENDY FAUVER 0.27 Ac.	1-23-37 DEUTSCHE BANK NAT'L TRUST CO 0.098 Ac.
1-23-4 PATRICIA C SANDERS TRUSTEE 0.30 Ac.	1-23-21 JONATHON & WENDY FAUVER 0.18 Ac.	1-23-38 DEUTSCHE BANK NAT'L TRUST CO 0.20 Ac.
1-23-5 JONATHON & WENDY FAUVER 0.20 Ac.	1-23-22 JONATHON & WENDY FAUVER 0.069 Ac.	1-23-39 DENNIS MICHAEL LEDGER TRUSTEE, ETAL 0.28 Ac.
1-23-6 DANIEL N & DORIS H QUINN 0.26 Ac.	1-23-23 MATT & HEATHER HOLT 0.25 Ac.	1-23-40 CLYDE L & KIMBERLY J HUNTSMAN 0.092 Ac.
1-23-7 ANTHONEY S VESSELS 0.30 Ac.	1-23-24 DAVID D & TRACY K BAIN 0.28 Ac.	1-23-41 CLYDE L & KIMBERLY J HUNTSMAN 0.36 Ac.
1-23-8 RUBY LOUISE WILLARDSON, ETAL 0.31 Ac.	1-23-25 ADAM & DIANA THOMPSON 0.33 Ac.	1-23-42 BENJAMIN K & SHAWNNA L CARROLL 0.23 Ac.
1-23-9 GREG R & ANGELA J BARTON 0.22 Ac.	1-23-26 WADE B BOHN & DESTINI LEVERING 0.23 Ac.	1-23-43 RANDY N & CATHY SITTERUD 0.24 Ac.
1-23-10 JOEL S & SUSAN DORSCH 0.18 Ac.	1-23-27 SCOTT P & DANA M MONTGOMERY 0.28 Ac.	1-23-44 TIM V & SHONNA L CURTIS 0.28 Ac.
1-23-11 ROBERT K & RALENE LARSEN 0.18 Ac.	1-23-28 CHRISTOFFER SCOTT BERNARD 0.19 Ac.	1-23-45 TYLER & KERISSA WHITING 0.26 Ac.
1-23-12 DALIN E & AMANDA L FAUSETT 0.18 Ac.	1-23-29 JOSEPH & SHEILA FIELDER 0.17 Ac.	1-23-46 BRADLEY V & KALYNN FAIL TRUSTEES 0.32 Ac.
1-23-13 JOE & JACKIE COLLARD 0.18 Ac.	1-23-30 SHEILA FIELDER 0.21 Ac.	1-23-47 LEE MONROE MAGNUSON 0.32 Ac.
1-23-14 BRETT N WHITE 0.21 Ac.	1-23-31 ROGER L & KAREN ANN SMITH 0.22 Ac.	1-23-48 BRADLEY V & KALYNN FAIL TRUSTEES 0.21 Ac.
1-23-15 RAY W & PAT E CHRISTMAS 0.34 Ac.	1-23-32 LUANN E KOCH, ETAL 0.21 Ac.	1-23-49 VAUGHN O & MARIANNE JUDI 0.25 Ac.
1-23-16 GREGG A HANSEN 0.23 Ac.	1-23-33 SCOTT & DANA MONTGOMERY 0.27 Ac.	1-23-53 DENNIS MICHAEL LEDGER TRUSTEE, ETAL 0.15 Ac.
1-23-17 STEVEN & HOLLY CAVE 0.27 Ac.	1-23-34 DARLENE MAGNUSON 0.26 Ac.	1-23-54 RODNEY C & JODI K MAGNUSON 0.098 Ac.



NE COR  
OF SE/4  
WEST 1344.95'

SOUTH 296.06'

S0°13'E 963.72'