

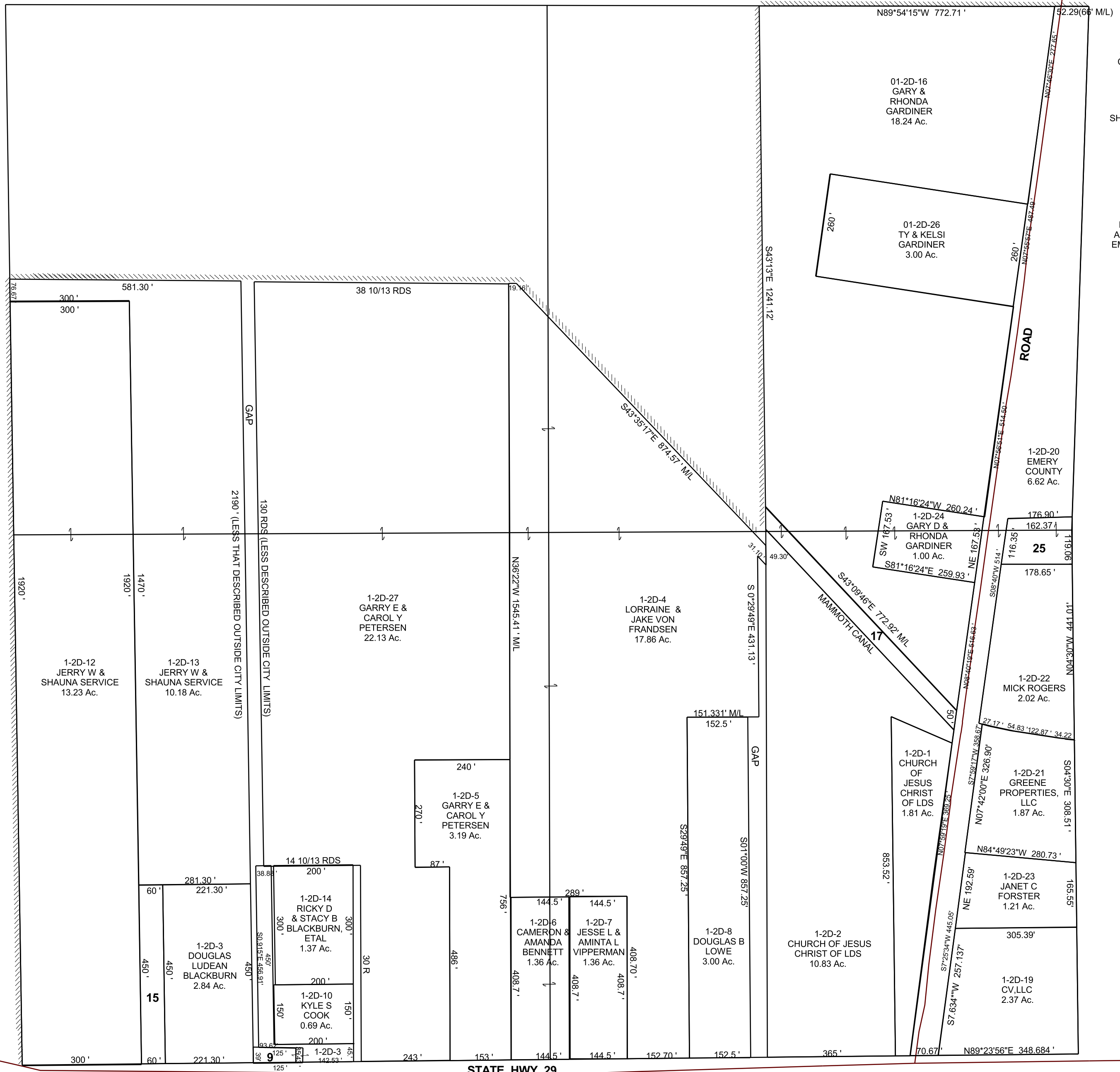
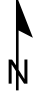
CASTLE DALE

NW/4 SECTION 28, T 18 S, R 8 E S.L.B. & M.

BOOK 1 PAGE 2D
SCALE: 1" = 200'
MAY 2, 2017

EX

THIS PLAT IS MADE SOLELY FOR THE PURPOSE OF ASSISTING IN LOCATING THE LAND AND THE RECORDER ASSUMES NO LIABILITY FOR VARIATIONS, IF ANY, WITH AN ACTUAL SURVEY.



- 1-2D-9 STATE ROAD COMMISSION 0.11 Ac.
- 1-2D-15 JERRY W & SHAUNA SERVICE 0.62 Ac.
- 1-2D-17 EDWARD P & JERI L GODDARD 0.66 Ac.
- 1-2D-25 LOCAL BLDG AUTHORITY OF EMERY COUNTY 0.46 Ac.

STATE HWY 29

1-2D