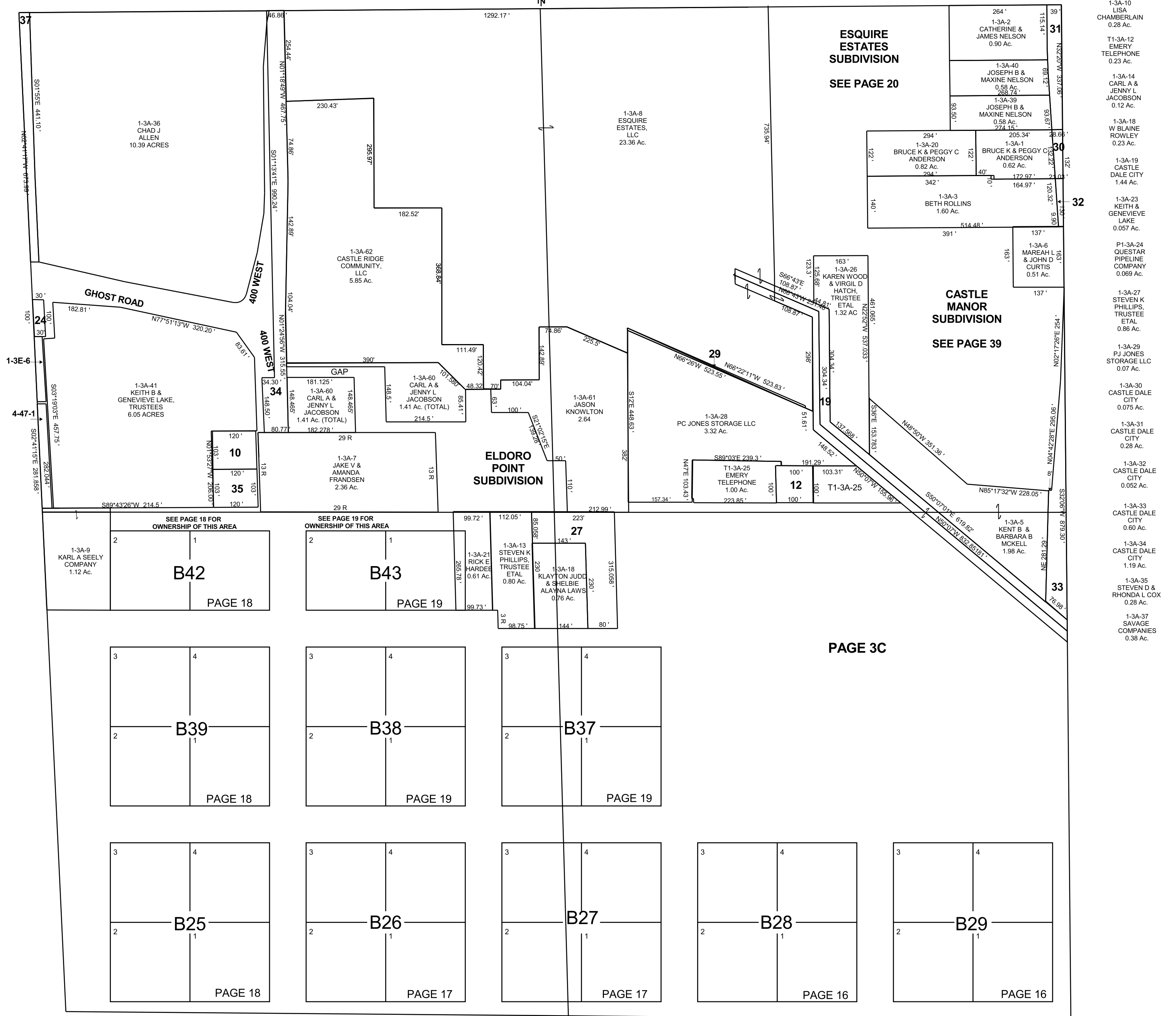


CASTLE DALE

NE/4 SECTION 33, T 18 S, R 08 E S.L.B. & M.

THIS PLAT IS MADE SOLELY FOR THE PURPOSE OF ASSISTING IN LOCATING THE LAND, AND THE RECORDER ASSUMES NO LIABILITY FOR VARIATIONS, IF ANY, WITH AN ACTUAL SURVEY.

THE BLOCKS ON THIS PAGE HAVE BEEN PLACED HERE FOR REFERENCE ONLY



- 1-3A-10 LISA CHAMBERLAIN 0.28 Ac.
- T1-3A-12 EMERY TELEPHONE 0.23 Ac.
- 1-3A-14 CARL A & JENNY L JACOBSON 0.12 Ac.
- 1-3A-18 W BLAINE ROWLEY 0.23 Ac.
- 1-3A-19 CASTLE DALE CITY 1.44 Ac.
- 1-3A-23 KEITH & GENEVIEVE LAKE 0.057 Ac.
- P1-3A-24 QUESTAR PIPELINE COMPANY 0.069 Ac.
- 1-3A-27 STEVEN K PHILLIPS, TRUSTEE ETAL 0.88 Ac.
- 1-3A-29 P.J. JONES STORAGE LLC 0.07 Ac.
- 1-3A-30 CASTLE DALE CITY 0.075 Ac.
- 1-3A-31 CASTLE DALE CITY 0.28 Ac.
- 1-3A-32 CASTLE DALE CITY 0.052 Ac.
- 1-3A-33 CASTLE DALE CITY 0.60 Ac.
- 1-3A-34 CASTLE DALE CITY 1.19 Ac.
- 1-3A-35 STEVEN D & RHONDA L COX 0.28 Ac.
- 1-3A-37 SAVAGE COMPANIES 0.38 Ac.