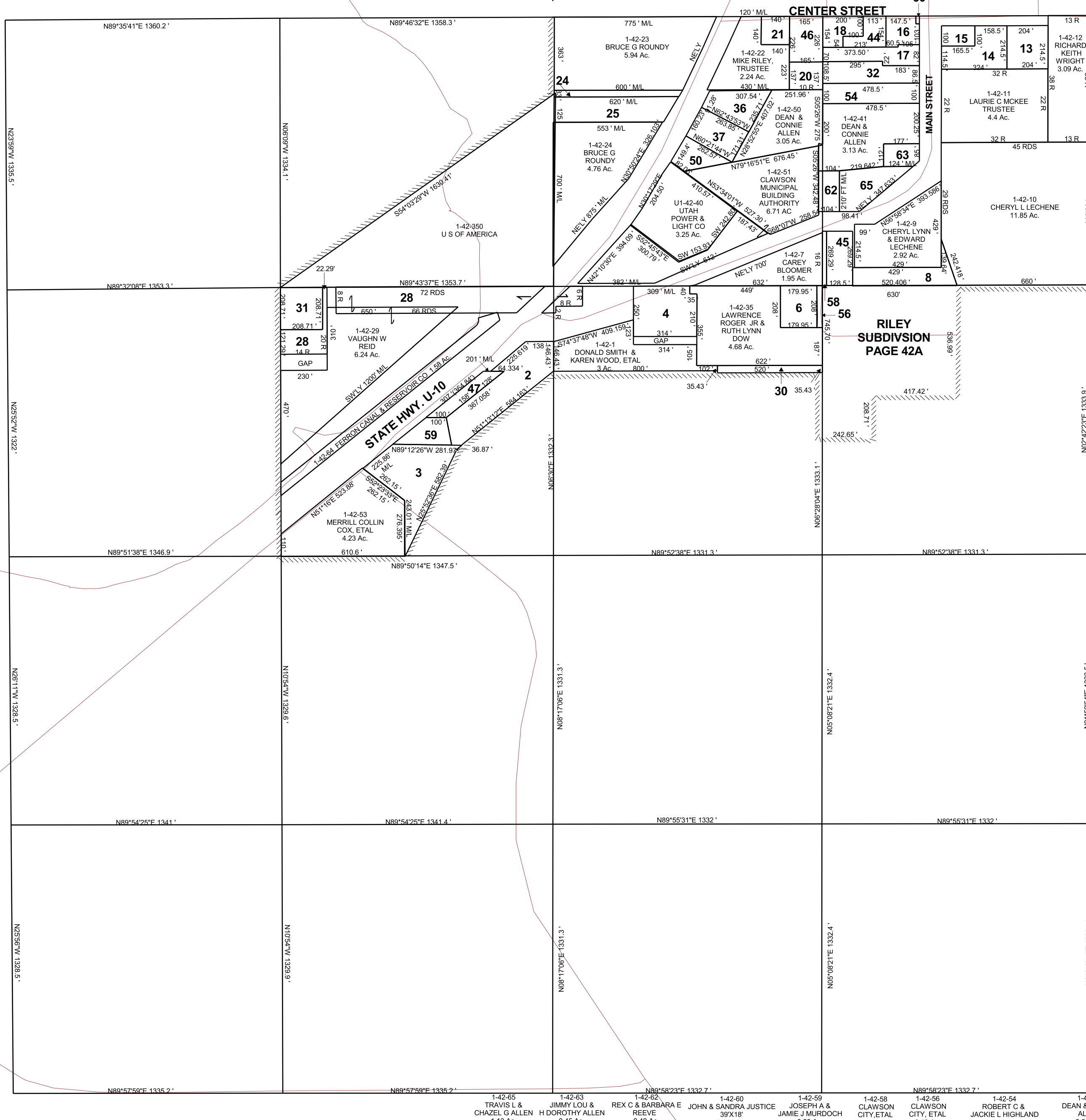


CLAWSON

SECTION 35, T 19 S, R 07 E S.L.B. & M.

BOOK 1 PAGE 42
SCALE: 1" = 400'
NOVEMBER 27, 2017

THIS PLAT IS MADE SOLELY FOR THE PURPOSE
OF ASSISTING IN LOCATING THE LAND, AND
THE RECORDER ASSUMES NO LIABILITY FOR
VARIATIONS, IF ANY, WITH AN ACTUAL SURVEY.



- 1-42-2 BECKY NELSON, TRUSTEE 2.36 Ac.
- 1-42-3 MICHAEL F L & DORIS B JENSEN 2.46 Ac.
- 1-42-4 JONI ELIZABETH MOOSMAN 1.77 Ac.
- 1-42-6 ANN FRANCES MINNICK, ETAL 0.99 Ac.
- 1-42-8 CLAY R & CHRISTY JEAN GASSER 1.11 Ac.
- 1-42-13 NOLAN L BEHUNIN 1.00 Ac.
- 1-42-14 JERRY L & TRINIDI PRICE 1.22 Ac.
- 1-42-15 EVAN D & MARY LOU PRICE 0.38 Ac.
- 1-42-16 SANDRA JUSTICE 0.54 Ac.
- 1-42-17 JAMIE KAYE HIGBEE, ETAL 0.89 Ac.
- 1-42-18 JOSHUA I PEREZ III & KRISTI K SHIEW-PEREZ 0.58 Ac.
- 1-42-20 MIKE RILEY, TRUSTEE 0.52 Ac.
- 1-42-21 ROBERT G & PERLA SILLIMAN 0.45 Ac.
- 1-42-24 BRUCE G ROUNDY 4.76 Ac.
- 1-42-25 BRUCE G ROUNDY 1.59 Ac.
- 1-42-28 VAUGHN W REID 4.35 Ac.
- 1-42-30 MICHAEL F L & DORIS B JENSEN 0.42 Ac.
- 1-42-31 CLAWSON WATER IMPROVEMENT DIST 1.00 Ac.
- 1-42-32 RANDY & JAMIE NIELSON 1.10 Ac.
- 1-42-36 DEAN & CONNIE ALLEN 1.00 Ac.
- 1-42-37 DEAN & CONNIE ALLEN 1.00 Ac.
- 1-42-44 SUSAN M SIMMONS 0.52 Ac.
- 1-42-45 DAVID PAUL STRESSING 0.92 Ac.
- 1-42-46 WARD & LISA JONES 0.86 Ac.
- 1-42-47 JON & TIFFANY J SORENSEN 0.44 Ac.
- 1-42-65 TRAVIS L & CHAZEL G ALLEN 1.13 Ac.
- 1-42-63 JIMMY LOU & H DOROTHY ALLEN 0.45 Ac.
- 1-42-62 REX C & BARBARA E REEVE 0.48 Ac.
- 1-42-60 JOHN & SANDRA JUSTICE 39'X18' 0.016 Ac.
- 1-42-59 JOSEPH A & JAMIE J MURDOCH 0.60 Ac.
- 1-42-58 CLAWSON CITY, ETAL 0.12 Ac.
- 1-42-56 CLAWSON CITY, ETAL 0.13 Ac.
- 1-42-54 ROBERT C & JACKIE L HIGHLAND 1.10 Ac.
- 1-42-50 DEAN & CONNIE ALLEN 3.05 Ac.