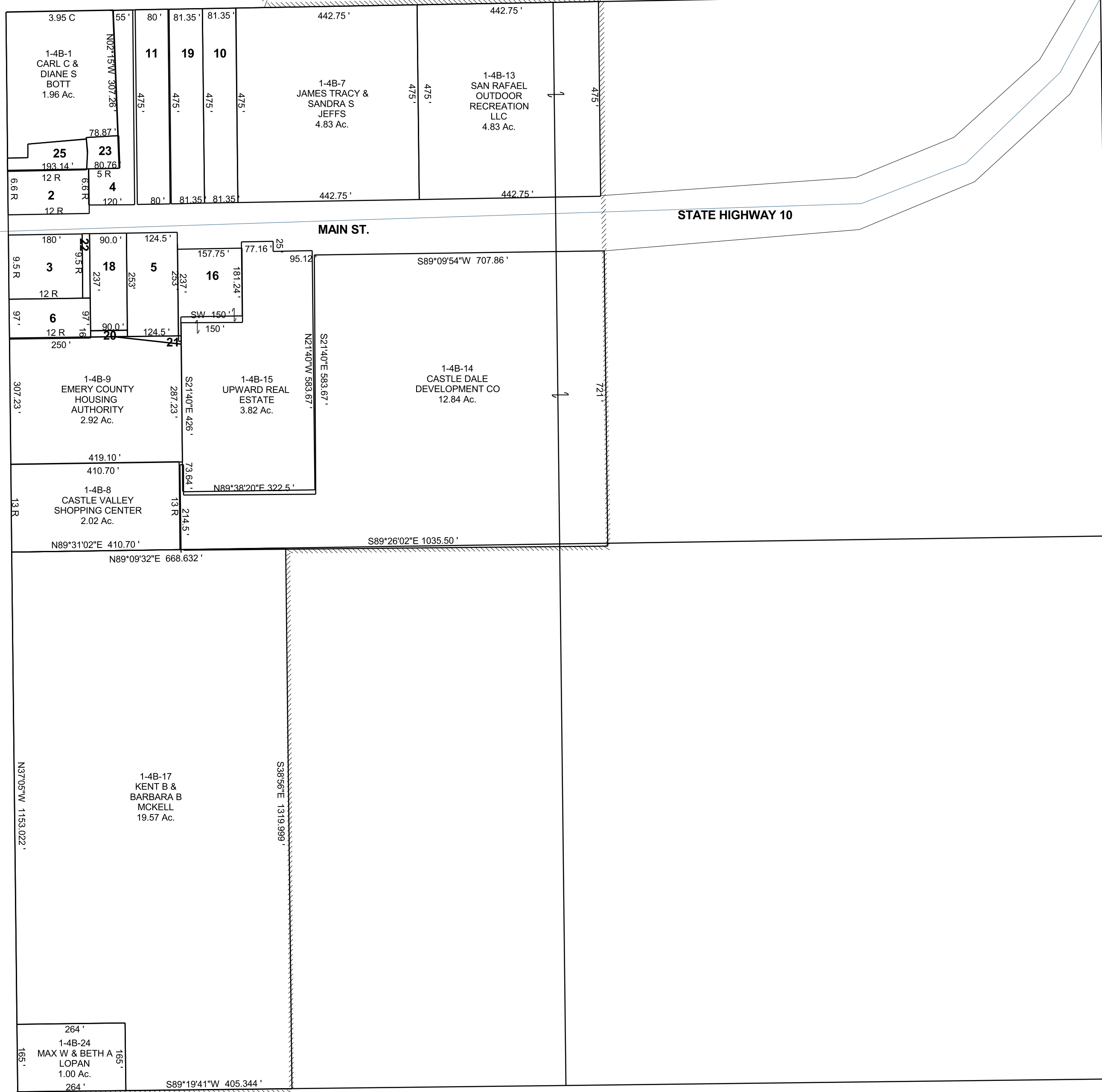


CASTLE DALE

SE/4 SECTION 34, T 18 S, R 08 E S.L.B. & M.

BOOK 1 PAGE 4B
SCALE: 1" = 200'
APRIL 16, 2018

THIS PLAT IS MADE SOLELY FOR THE PURPOSE
OF ASSISTING IN LOCATING THE LAND, AND
THE RECORDER ASSUMES NO LIABILITY FOR
VARIATIONS, IF ANY, WITH AN ACTUAL SURVEY.



- 1-4B-2
JL & JD
PROPERTIES,
LLC
0.49 Ac.
- 1-4B-3
EASTERN UTAH
COMMUNITY
CREDIT UNION
0.65 Ac.
LESS ROAD (0.49 Ac.)
- 1-4B-4
UTAH BUSINESS
LENDING
CORPORATION
0.61 Ac.
- 1-4B-5
DEJD
CASTLE DALE
LLC
0.72 Ac.
- 1-4B-6
VOLGAR
VALDEZ
0.44 Ac.
- 1-4B-10
TRACY &
SANDRA
JEFFS
0.89 Ac.
- 1-4B-11
UTAH BUSINESS
LENDING CORP
0.87 Ac.
- 1-4B-16
CASTLE DALE
DEVELOPMENT CO
0.66 Ac.
- 1-4B-18
PATRICK G &
AMBER LEE
BRAUN
0.49 Ac.
- 1-4B-19
TRACY &
SANDRA
JEFFS
0.89 Ac.
- 1-4B-20
PATRICK G &
AMBER LEE
BRAUN
0.033 Ac.
- 1-4B-21
PATRICK G &
AMBER LEE
BRAUN
0.039 Ac.
- 1-4B-22
PATRICK G &
AMBER LEE
BRAUN
0.065 Ac.
- 1-4B-23
UTAH BUSINESS
LENDING
CORPORATION
0.14 Ac.
- 1-4B-25
JL & JD
PROPERTIES LLC
0.27 Ac.