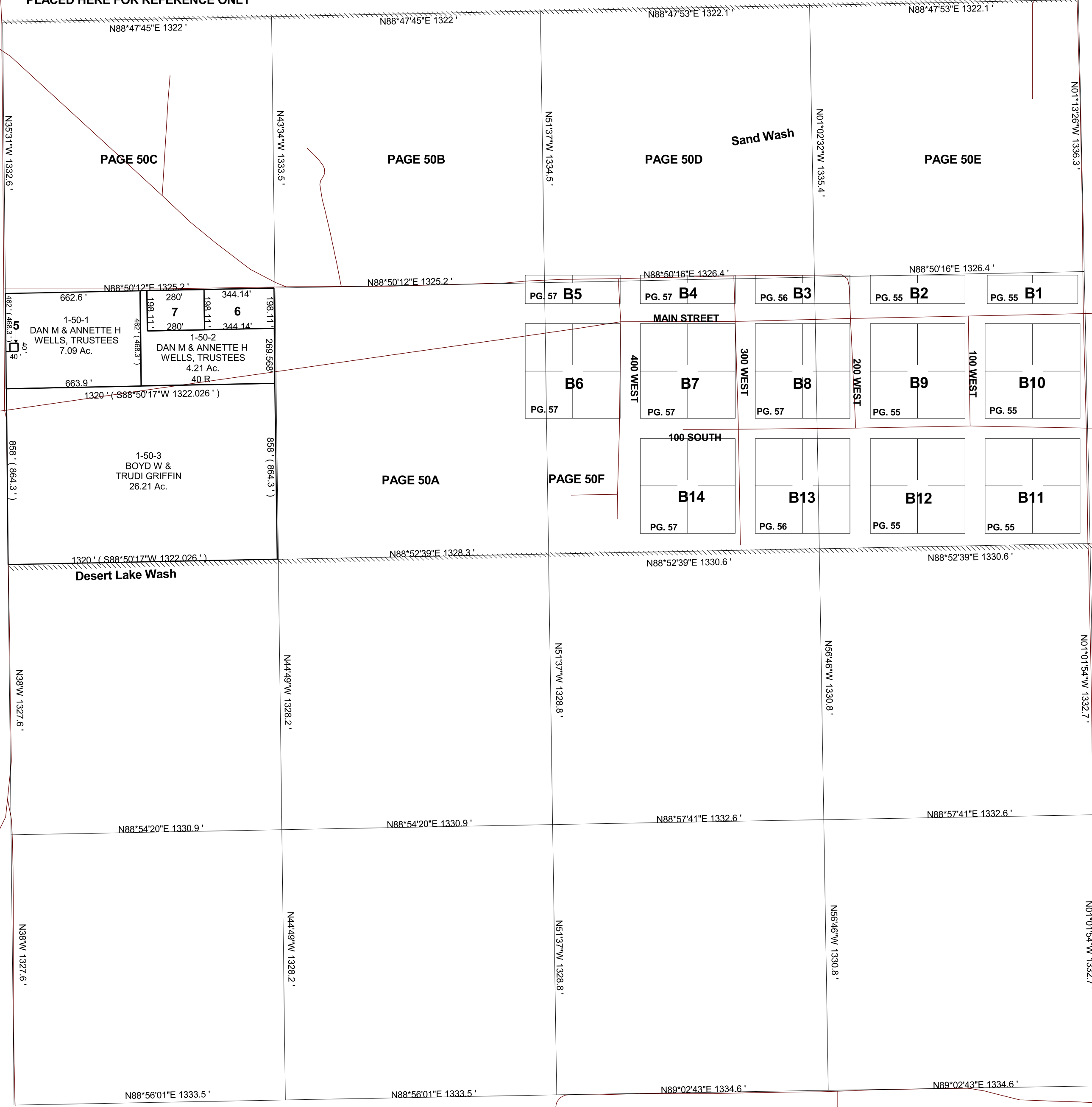


CLEVELAND

SECTION 13, T 17 S, R 09 E S.L.B. & M.

THIS PLAT IS MADE SOLELY FOR THE PURPOSE OF ASSISTING IN LOCATING THE LAND, AND THE RECORDER ASSUMES NO LIABILITY FOR VARIATIONS, IF ANY, WITH AN ACTUAL SURVEY.

THE BLOCKS ON THIS PAGE HAVE BEEN PLACED HERE FOR REFERENCE ONLY



CLASS 'B' 209

1-50-5
EMERY
TELCOM
0.037 Ac.

1-50-6
BRANDON D
& BARBARA J
BEHLING
1.46 Ac.

1-50-7
STEVE &
DEBBIE
MCNEE
1.27 Ac.