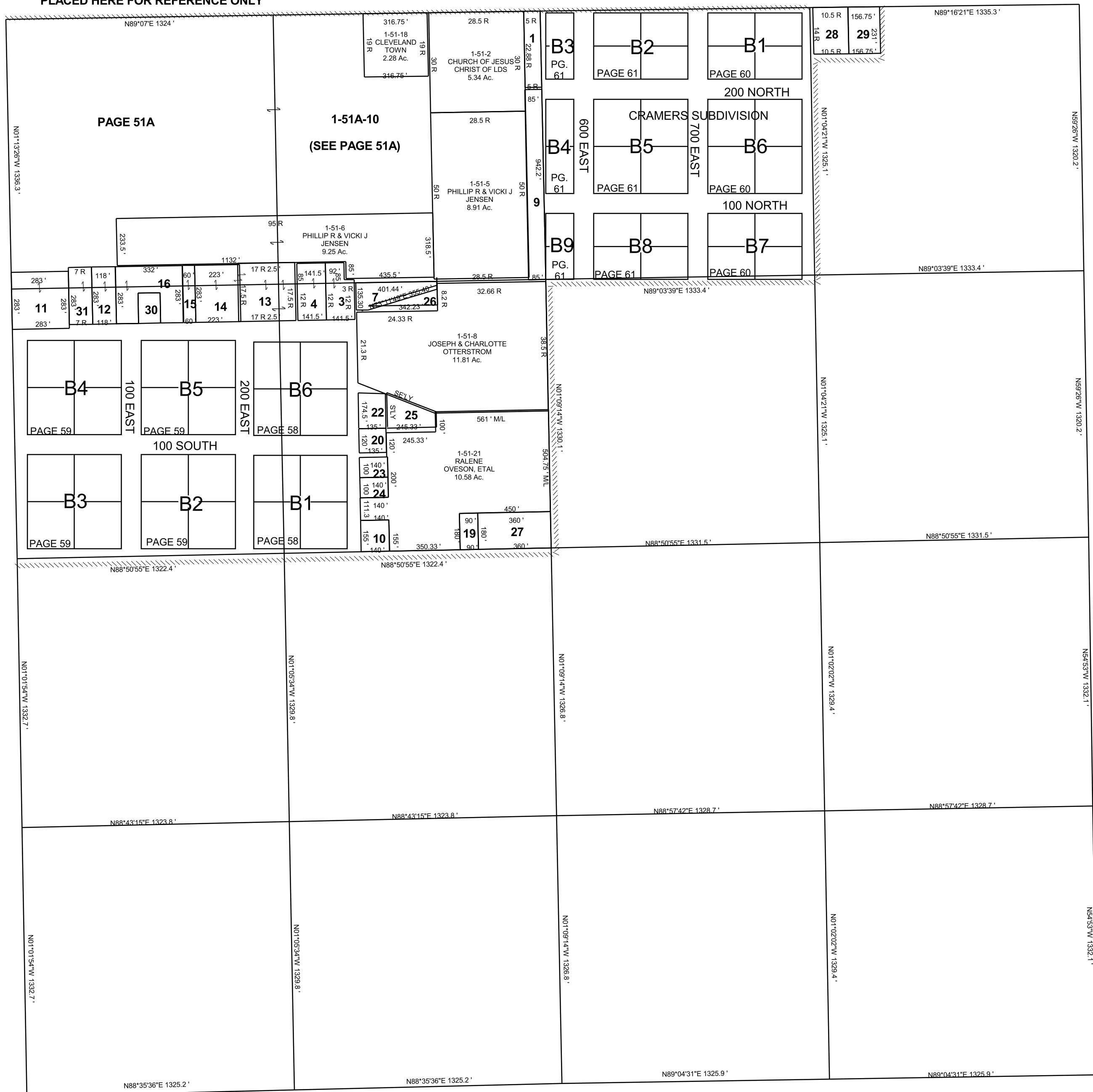


CLEVELAND

SECTION 18, T 17 S, R 10 E S.L.B. & M.

THIS PLAT IS MADE SOLELY FOR THE PURPOSE OF ASSISTING IN LOCATING THE LAND, AND THE RECORDER ASSUMES NO LIABILITY FOR VARIATIONS, IF ANY, WITH AN ACTUAL SURVEY.

THE BLOCKS ON THIS PAGE HAVE BEEN PLACED HERE FOR REFERENCE ONLY



- 1-51-1 CHURCH OF JESUS CHRIST OF LDS 0.71 Ac.
- 1-51-3 OWEN WILLIAM & NORMA J OLSEN 0.82 Ac.
- 1-51-4 GREGORY & DARCEY KAY POWELL 0.92 Ac.
- 1-51-7 OWEN WILLIAM & NORMA J OLSEN 0.90 Ac.
- 1-51-9 CLEVELAND TOWN 1.84 Ac.
- 1-51-10 RICHARD K & ANN R MURDOCH, TRUSTEES 0.50 Ac.
- 1-51-11 MARVIN W & COLLEEN L JENSEN 1.84 Ac.
- 1-51-12 MELVIN R MORTENSEN, ETAL 0.77 AC
- 1-51-13 LESLIE L MORTENSEN, TRUSTEE 1.88 Ac.
- 1-51-14 ROYCE & ELAINE ALLRED 1.45 Ac.
- 1-51-15 ROYCE & ELAINE ALLRED 0.39 Ac.
- 1-51-16 GARY L NORTON, ETAL 1.78 Ac.
- 1-51-19 DEBRA J OVESON 0.37 Ac.
- 1-51-20 PAUL E & SANDRA OVESON 0.37 Ac.
- 1-51-22 LYDELL & KAYE L OVESON 0.54 Ac.
- 1-51-23 DANIEL PAUL & ANGELA VIERS 0.32 Ac.
- 1-51-24 GERALD D & BETH B MECHAM 0.32 Ac.
- 1-51-25 LYDELL & KAYE L OVESON 0.70 Ac.
- 1-51-26 CLEVELAND CITY 0.38 Ac.
- 1-51-27 ALVIN M & JAMIE L EWELL 1.49 Ac.
- 1-51-28 MARVIN & COLLEEN JENSEN 0.92 Ac.
- 1-51-29 SHEN & VERLA JENSEN 0.83 Ac.
- 1-51-30 ERIC & HEATHER NORTON 0.38 AC
- 1-51-31 MICHAEL C MORTENSEN 0.75 AC