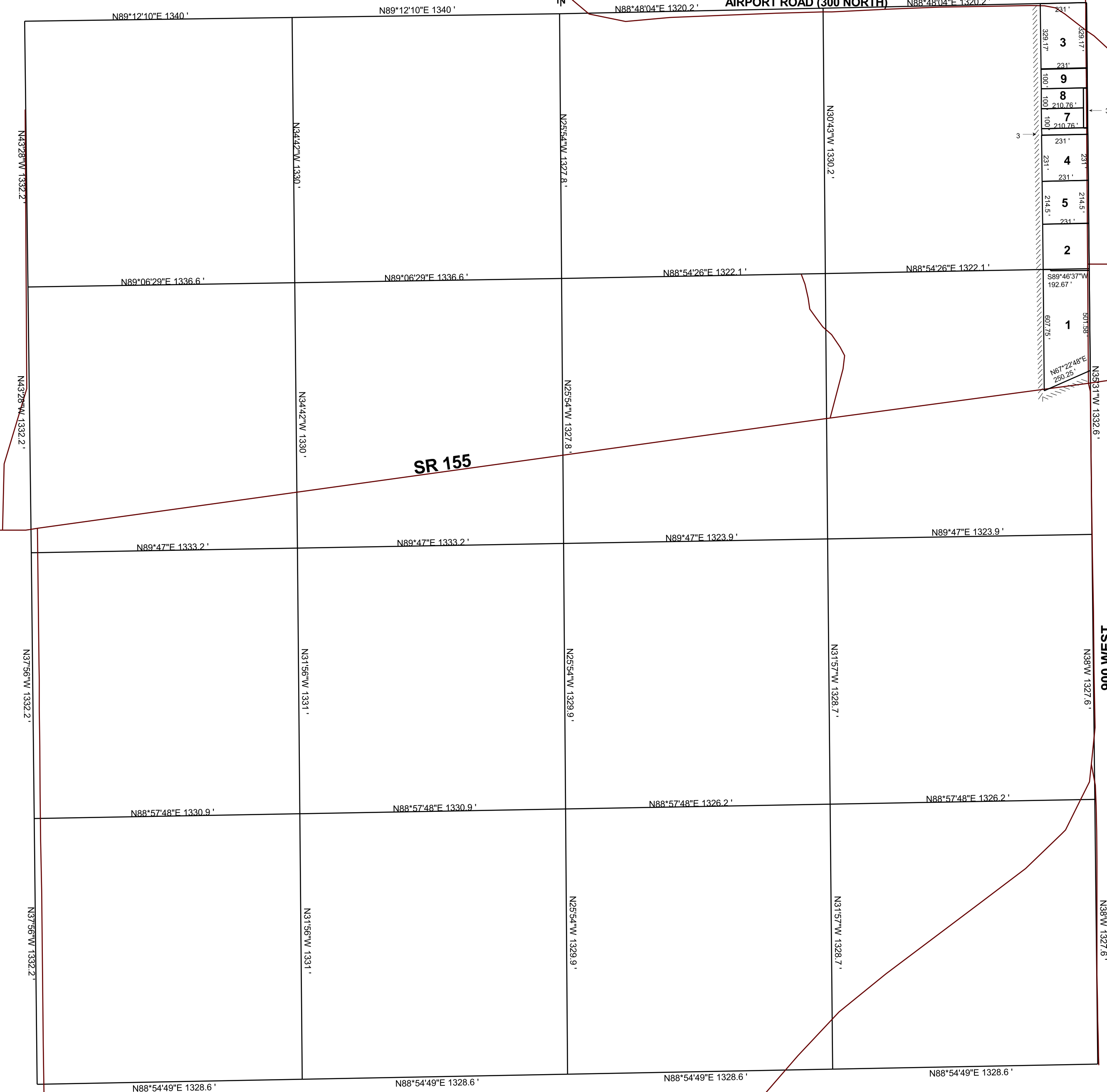


CLEVELAND

SECTION 14, T 17 S, R 09 E S.L.B. & M.

BOOK 1 PAGE 53  
SCALE: 1" = 400'  
OCTOBER 29, 2021

THIS PLAT IS MADE SOLELY FOR THE PURPOSE OF ASSISTING IN LOCATING THE LAND, AND THE RECORDER ASSUMES NO LIABILITY FOR VARIATIONS, IF ANY, WITH AN ACTUAL SURVEY.



- 1-53-1  
DELANNA & TRENT  
RILEY  
2.93 Ac.
- 1-53-2  
GERALD & KIMBERLY  
CRAWFORD  
1.17 Ac.
- 1-53-3  
MICHAEL R  
& RANDI B  
DENNIS  
2.01 AC  
(TOTAL)
- 1-53-4  
DOUGLAS  
EARL  
TUCKER  
1.22 AC.
- 1-53-5  
SPENCER & KATHRYN  
LIVINGSTON  
1.14 Ac.
- 1-53-7  
DYLAN JEFF &  
JEFF W  
HORROCKS  
0.48 Ac.
- 1-53-8  
KRISTI &  
SCOTT PAGE  
0.48 Ac.
- 1-53-9  
JESSICA M LESTER  
0.53 Ac.