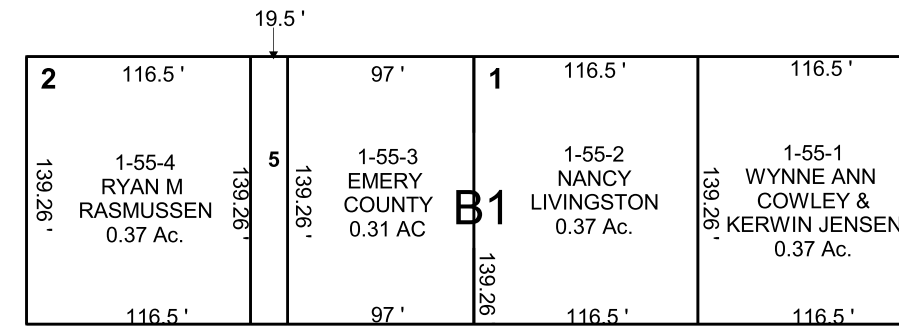
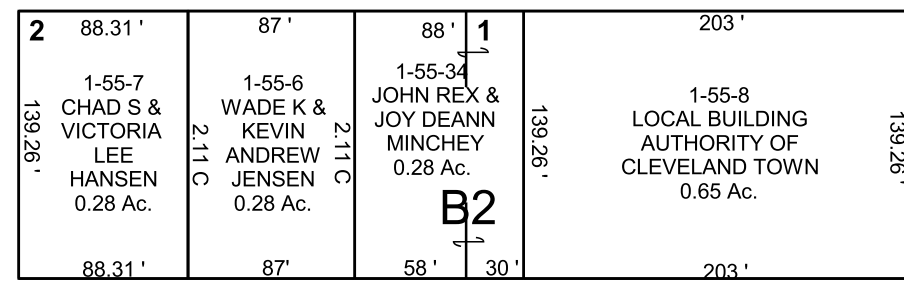


CLEVELAND  
 OVIATTS SUBDIVISION  
 SE/4 NE/4 SECTION 13, T 17 S, R 09 E S.L.B. & M.

THIS PLAT IS MADE SOLELY FOR THE PURPOSE  
 OF ASSISTING IN LOCATING THE LAND, AND  
 THE RECORDER ASSUMES NO LIABILITY FOR  
 VARIATIONS, IF ANY, WITH AN ACTUAL SURVEY.



1-55-5  
 RICK M & VICKI L  
 RASMUSSEN  
 0.062 Ac.

1-55-17  
 JENSEN FAMILY  
 RENTALS  
 LLC  
 0.13 AC.

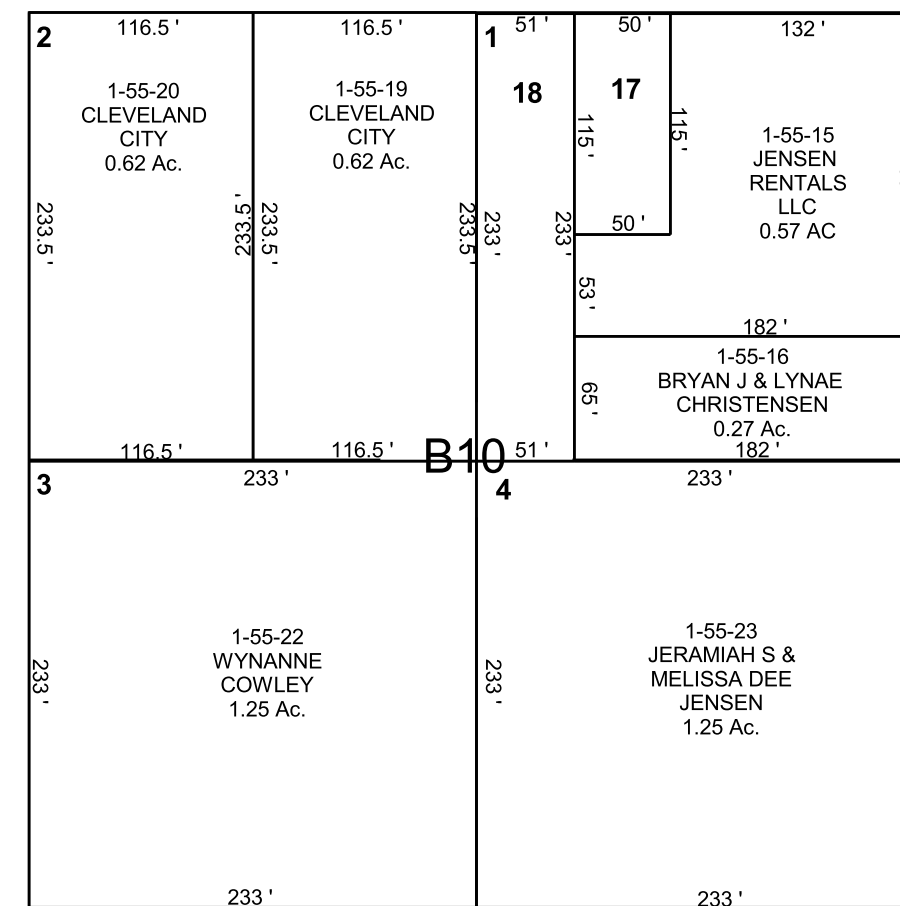
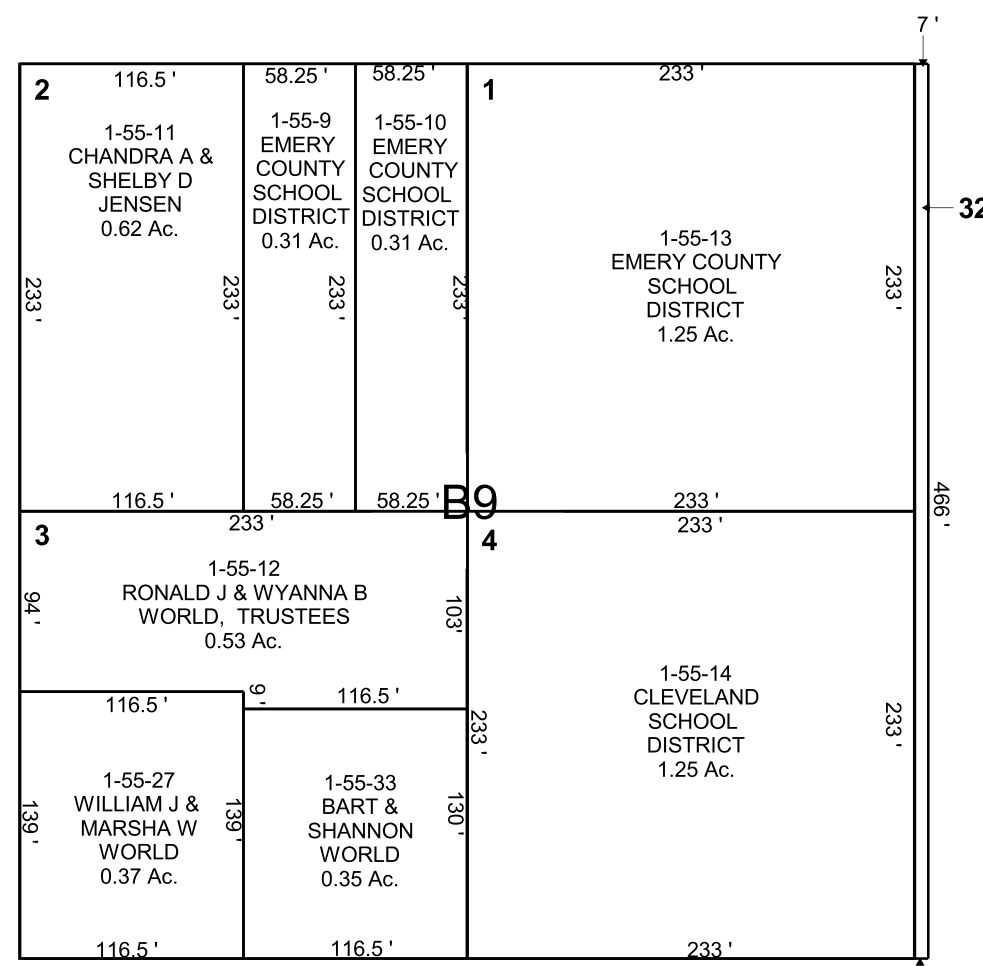
1-55-18  
 JENSEN FAMILY  
 RENTALS  
 LLC  
 0.27 AC

1-55-30  
 ELVA M WAYNE,  
 LIFE ESTATE  
 ETAL  
 0.049 Ac.

1-55-32  
 EMERY COUNTY  
 SCHOOL DISTRICT  
 0.075 Ac.

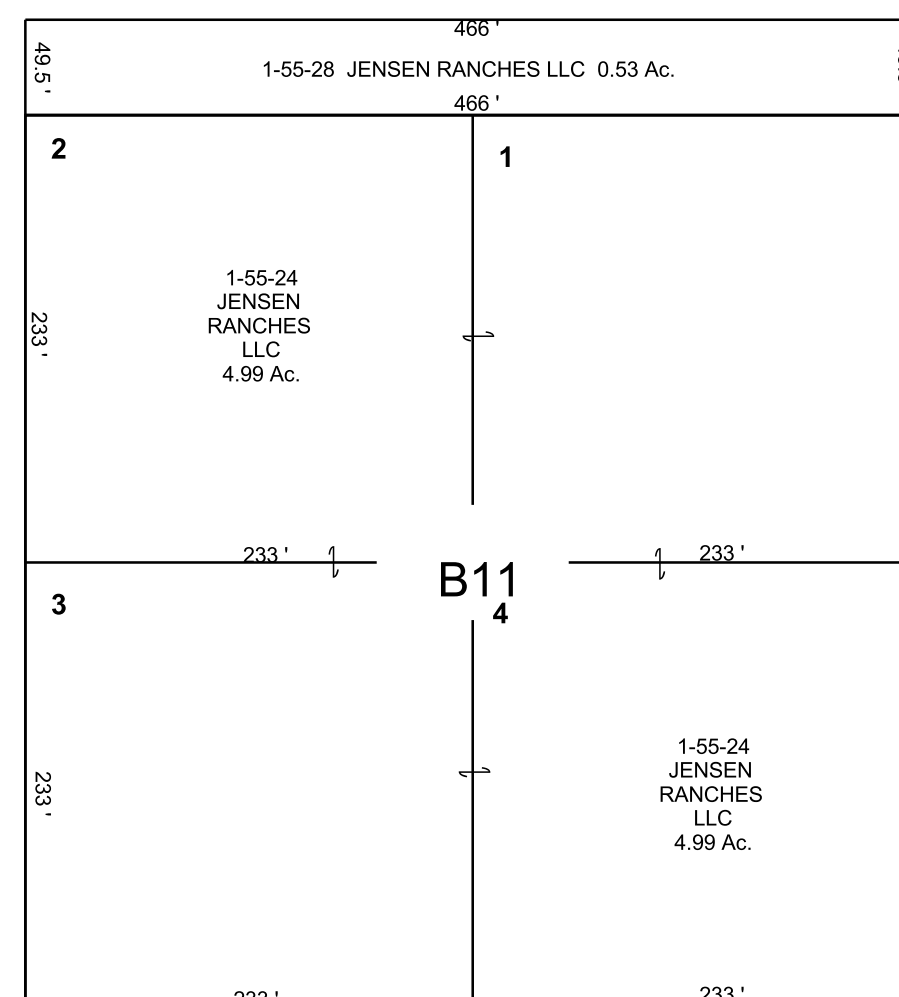
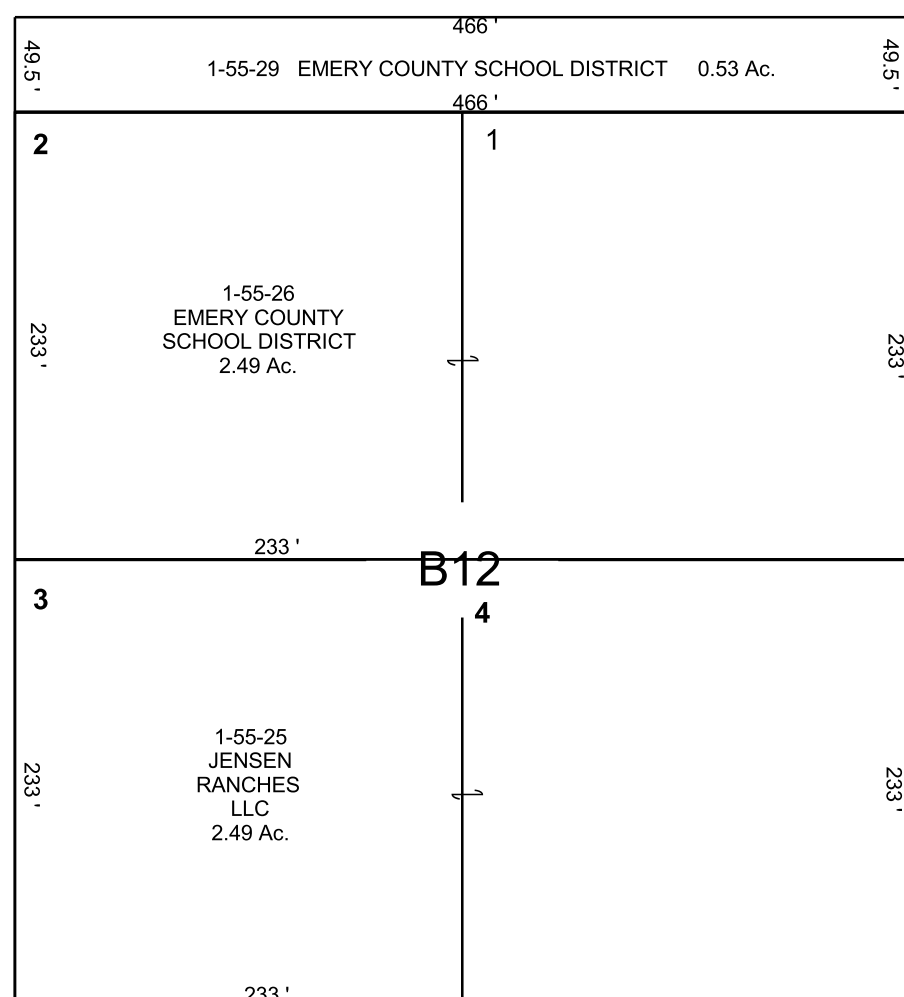
MAIN

STREET



100

SOUTH



WEST