

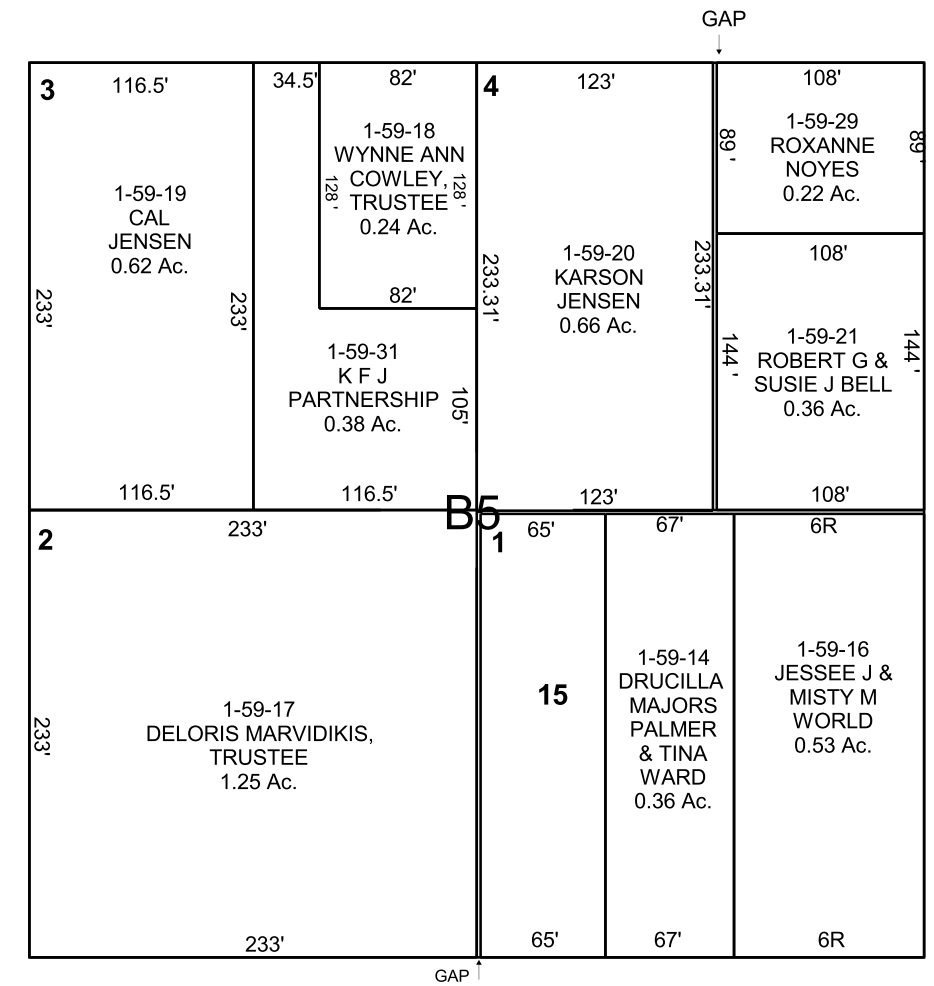
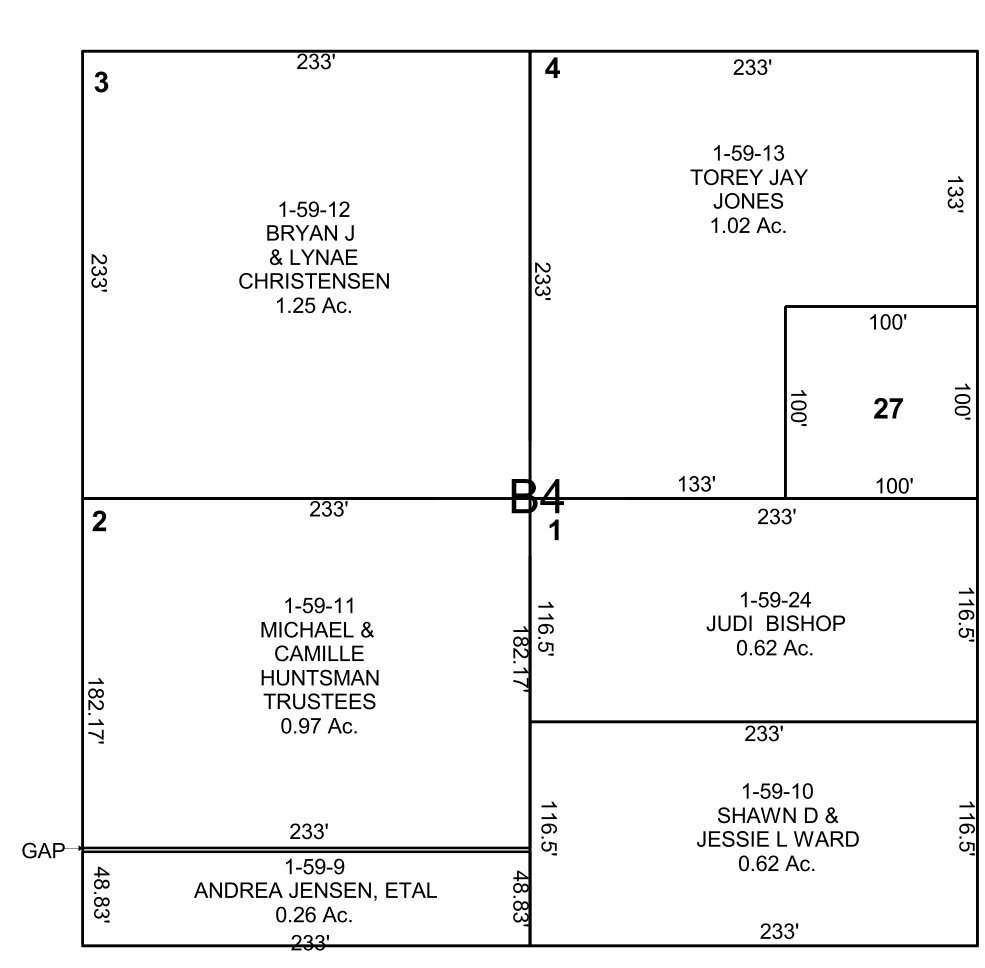
CLEVELAND

NW/4 SECTION 18, T 17 S, R 10 E S.L.B. & M.

THIS PLAT IS MADE SOLELY FOR THE PURPOSE OF ASSISTING IN LOCATING THE LAND, AND THE RECORDER ASSUMES NO LIABILITY FOR VARIATIONS, IF ANY, WITH AN ACTUAL SURVEY.

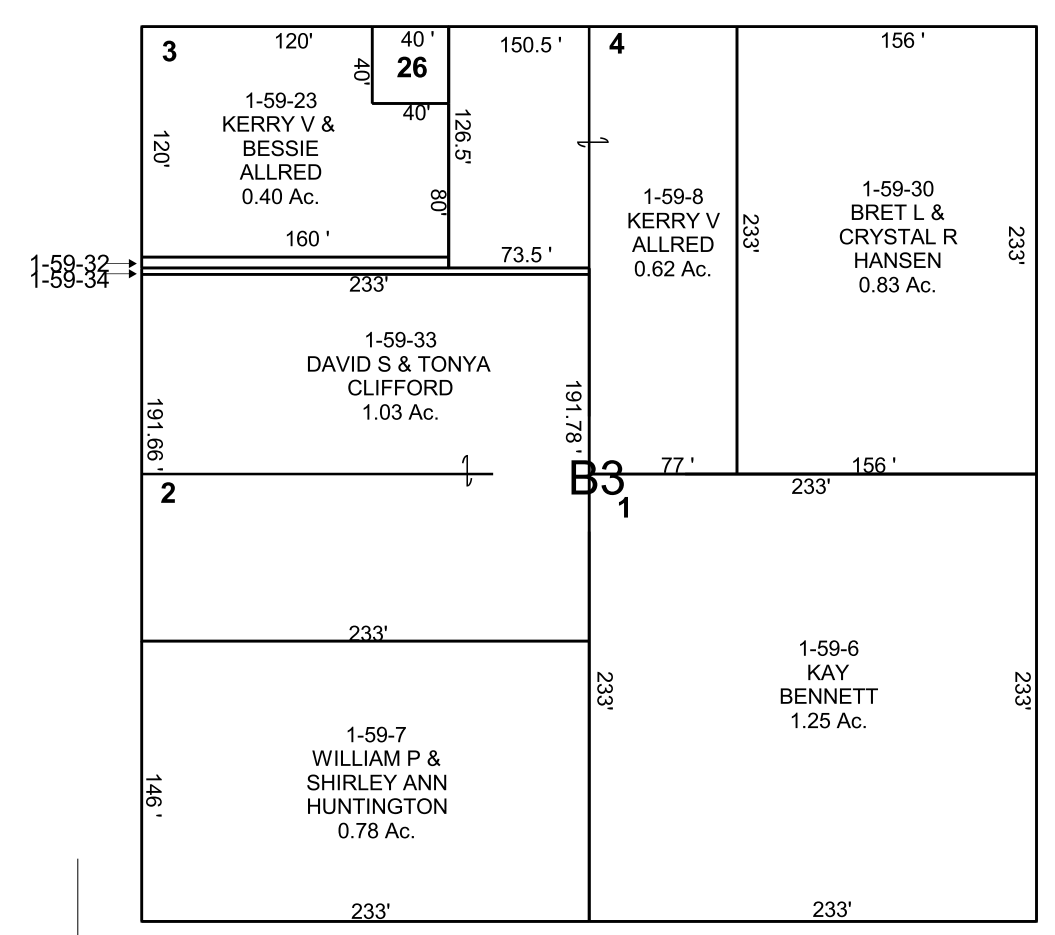


MAIN STREET

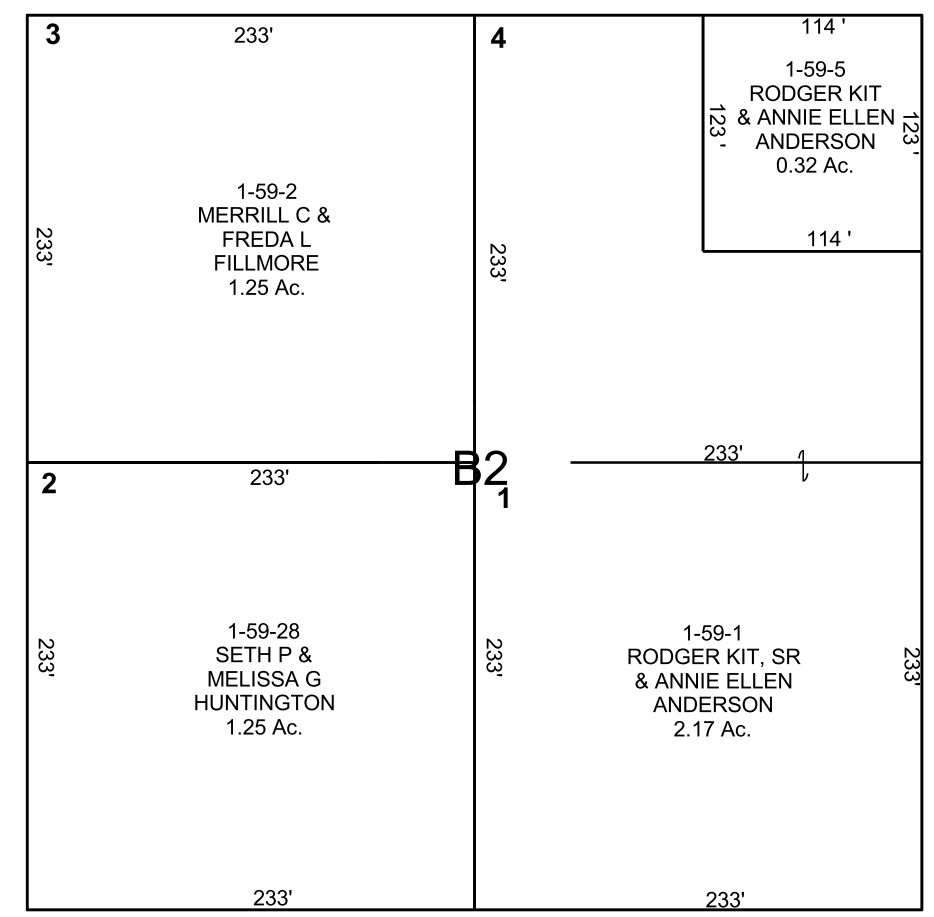


- 1-59-15
DRUCILLA &
CHARLES D'MONT
PALMER
0.35 Ac.
- 1-59-26
KERRY V
& BESSIE
ALLRED
0.04 Ac.
- 1-59-27
TOREY J JONES &
KRISTY K JESSEN
0.23 Ac.
- 1-59-32
KERRY V
& BESSIE
ALLRED
0.02 Ac.
- 1-59-34
KERRY V
& BESSIE
ALLRED
0.02 Ac.

100 SOUTH



100 EAST



WEST 1/4 COR.