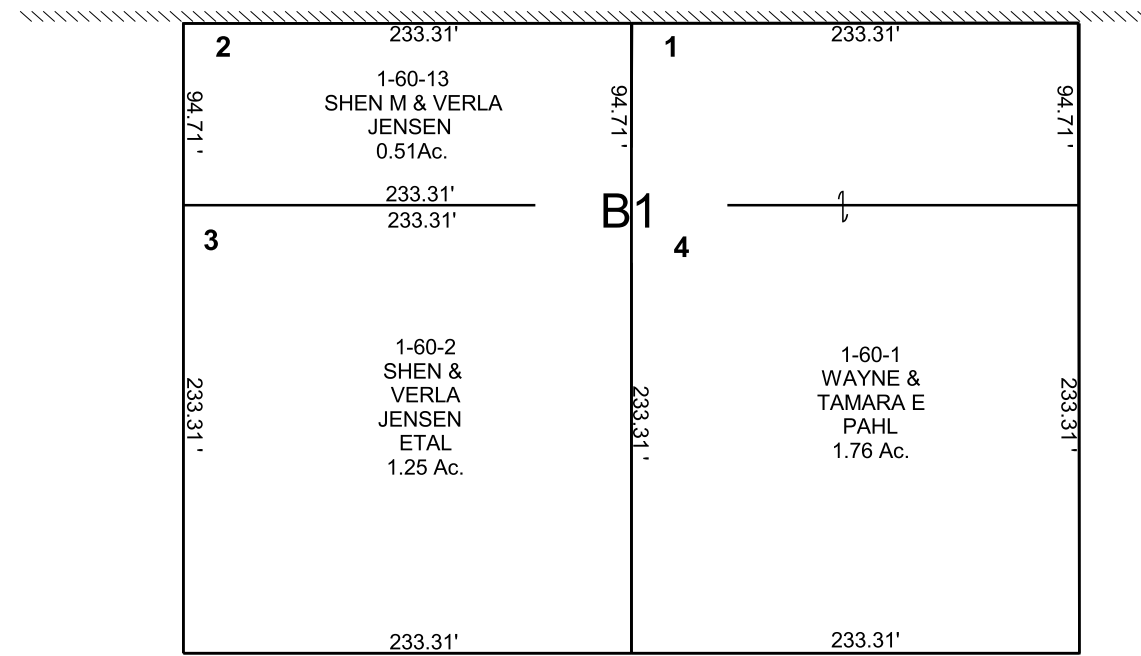


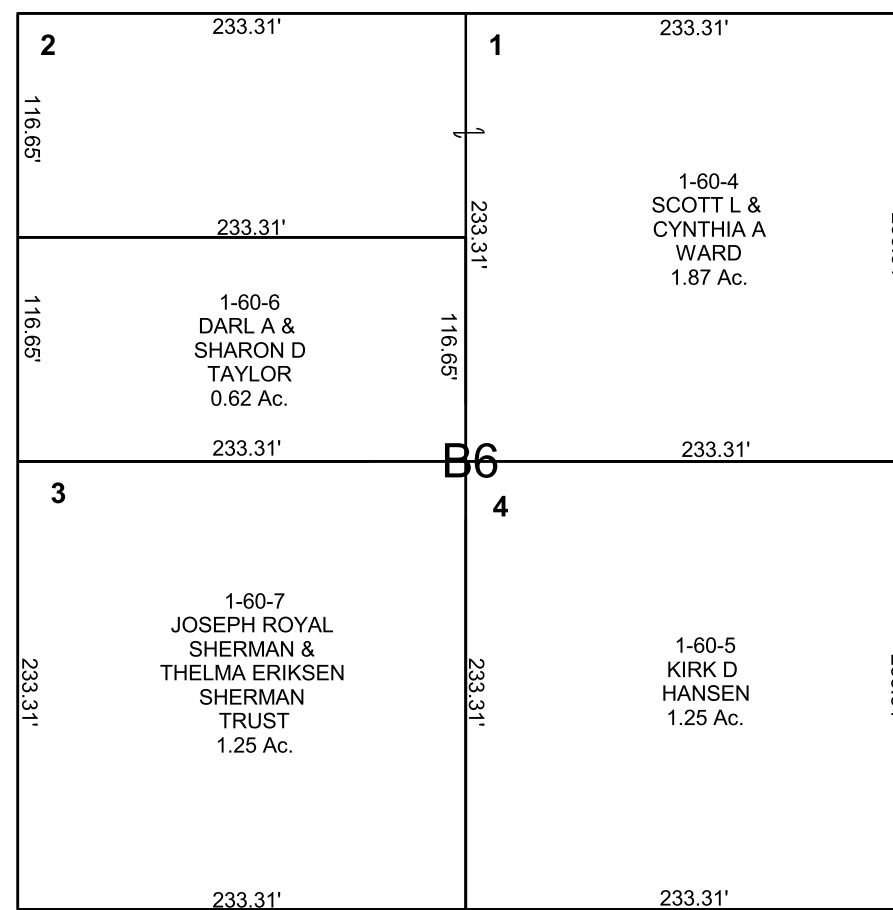
CRAMERS SUBDIVISION
 CLEVELAND TOWNSITE
 NE/4 SECTION 18, T 17 S, R 10 E S.L.B. & M.

BOOK 1 PAGE 60
 SCALE: 1" = 100'
 APRIL 9, 2018

THIS PLAT IS MADE SOLELY FOR THE PURPOSE
 OF ASSISTING IN LOCATING THE LAND, AND
 THE RECORDER ASSUMES NO LIABILITY FOR
 VARIATIONS, IF ANY, WITH AN ACTUAL SURVEY.



200 NORTH



100 NORTH

