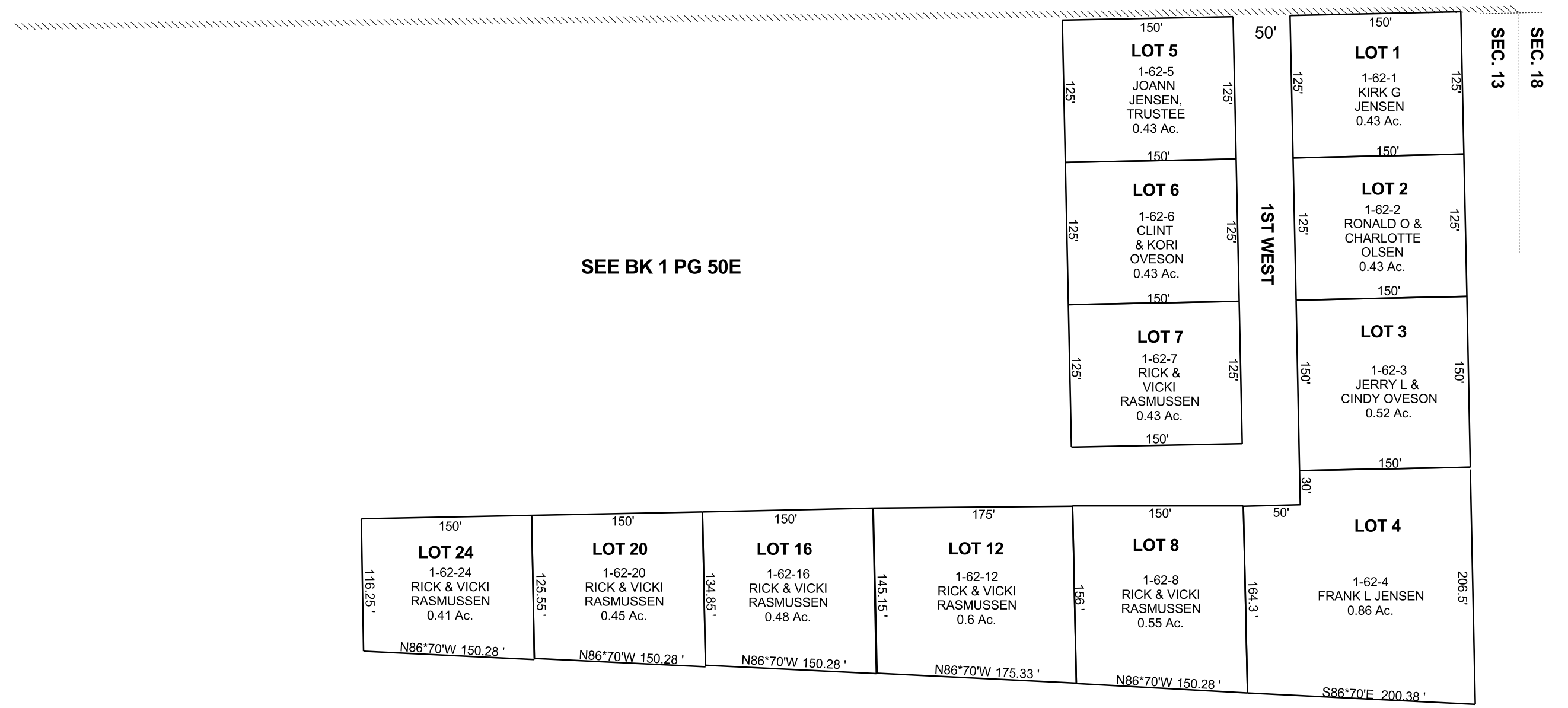


CLEVELAND
COUNTRY ESTATES SUBDIVISION
NE/4 NE/4 SECTION 13, T 17 S, R 09 E S.L.B. & M.

THIS PLAT IS MADE SOLELY FOR THE PURPOSE
OF ASSISTING IN LOCATING THE LAND, AND
THE RECORDER ASSUMES NO LIABILITY FOR
VARIATIONS, IF ANY, WITH AN ACTUAL SURVEY.



SEE BK 1 PG 50E