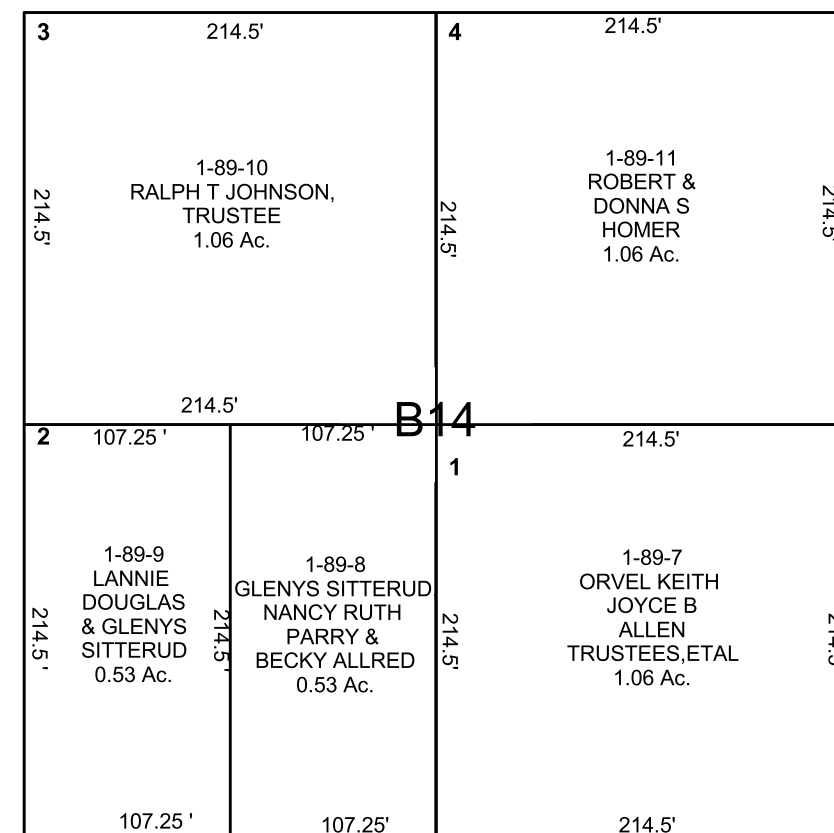
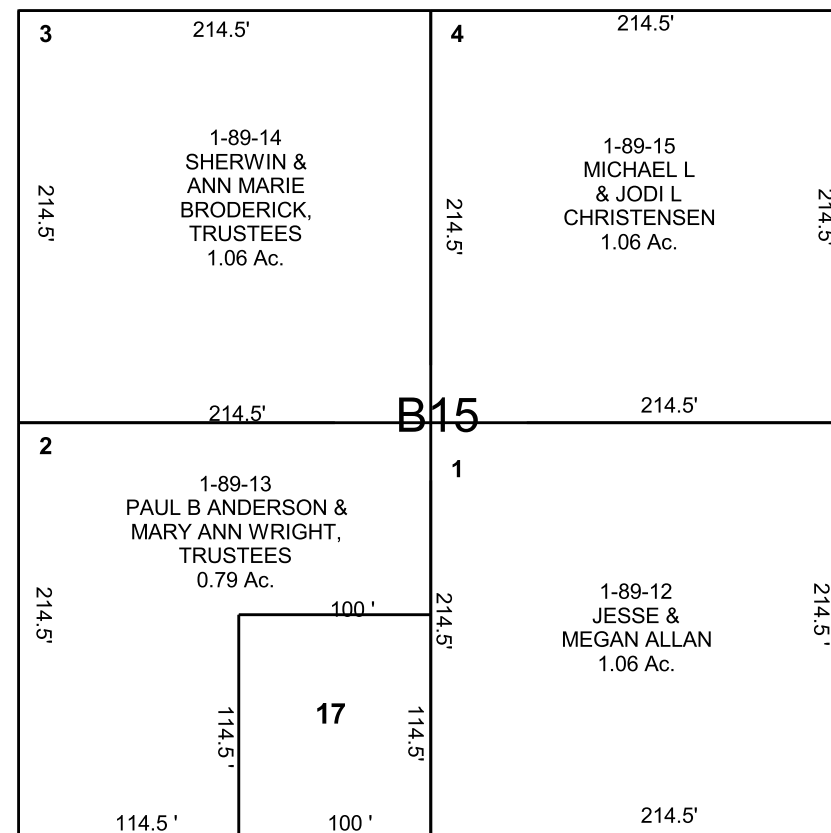


EMERY

SW/4 NE/4 SECTION 9, T 22 S, R 06 E S.L.B. & M.

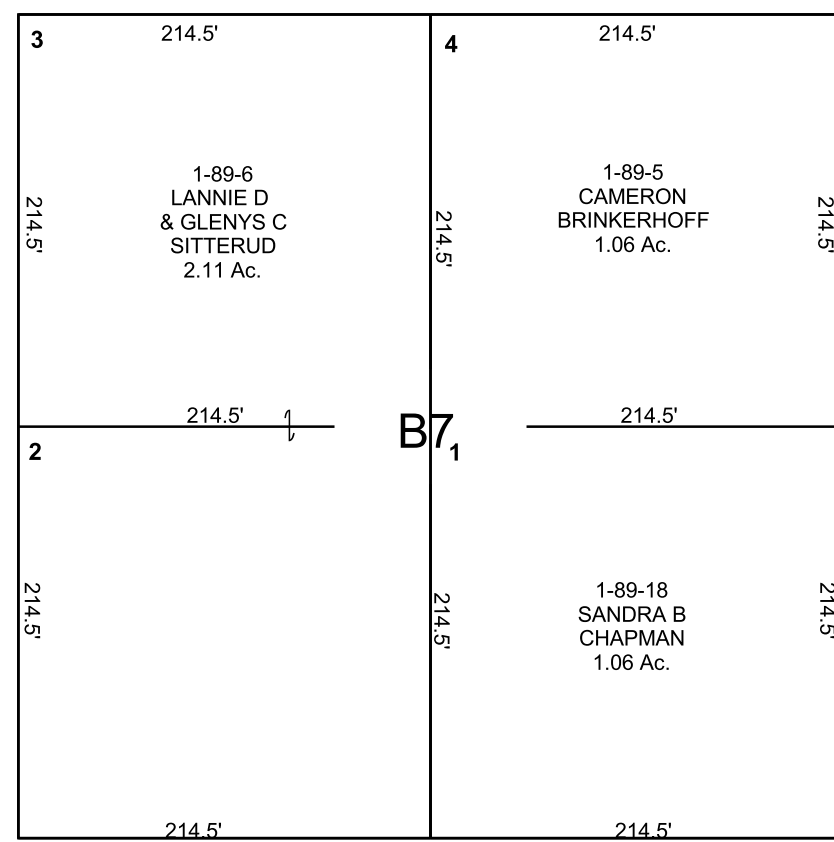
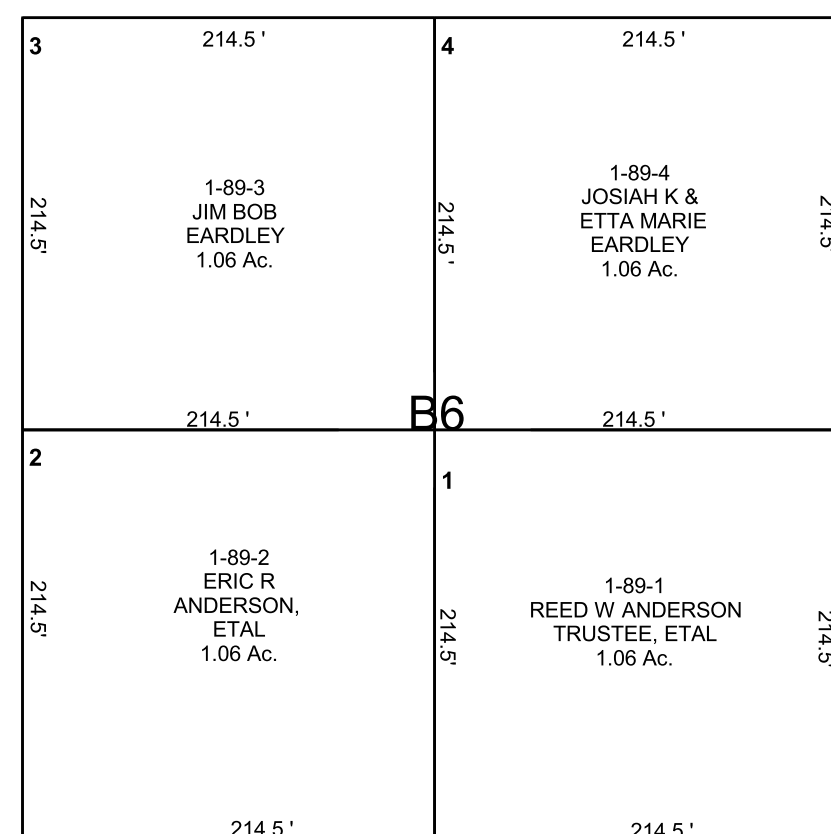
THIS PLAT IS MADE SOLELY FOR THE PURPOSE  
OF ASSISTING IN LOCATING THE LAND, AND  
THE RECORDER ASSUMES NO LIABILITY FOR  
VARIATIONS, IF ANY, WITH AN ACTUAL SURVEY.



1-89-17  
PAUL B ANDERSON &  
MARY ANN WRIGHT,  
TRUSTEES  
0.26 Ac.

200

SOUTH



100

WEST