

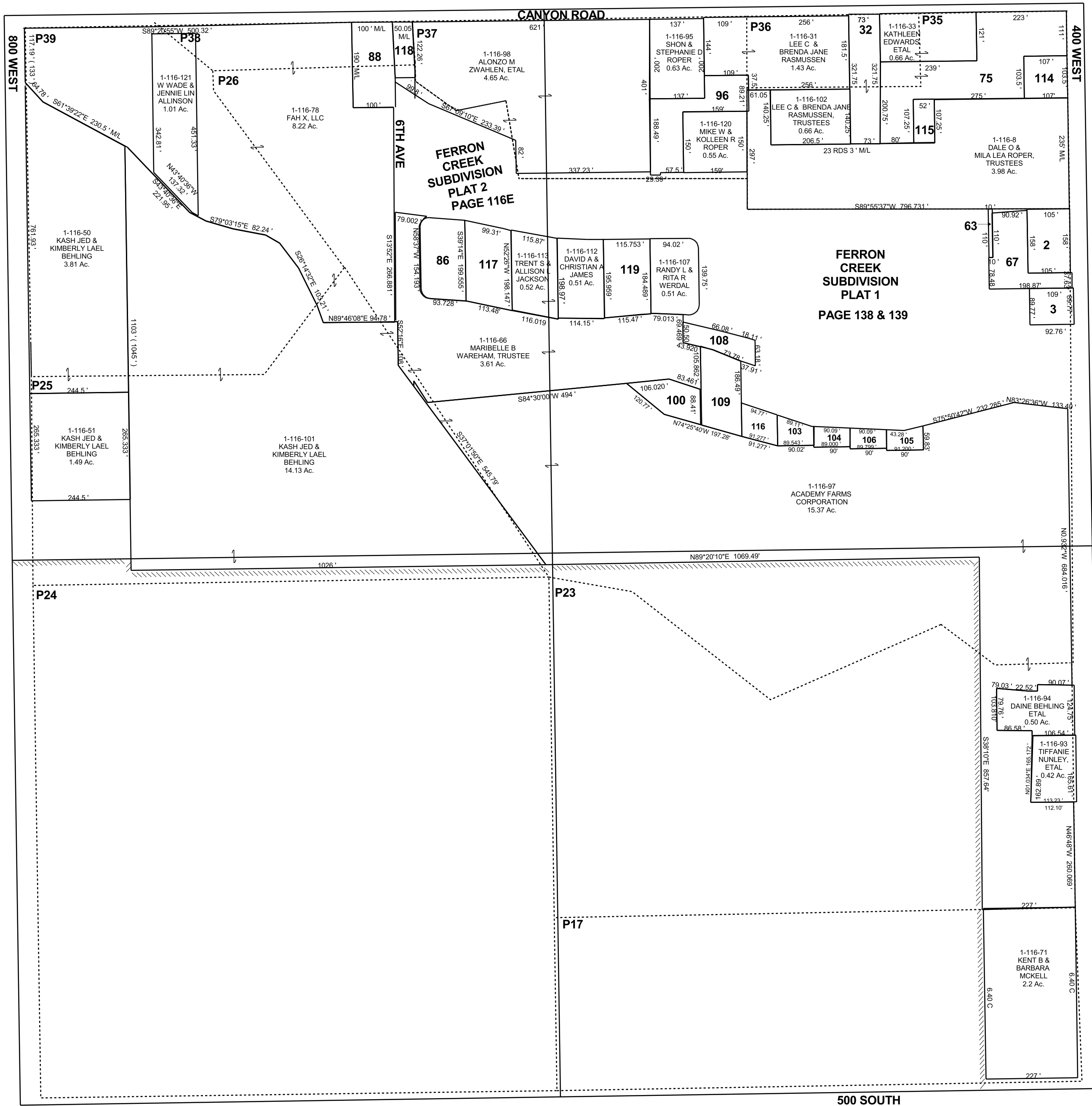
FERRON

NW/4 SECTION 16, T 20 S, R 7 E S.L.B. & M.

BOOK 1 PAGE 116
SCALE: 1" = 200'
JUNE 25, 2018

EX

THIS PLAT IS MADE SOLELY FOR THE PURPOSE OF ASSISTING IN LOCATING THE LAND, AND THE RECORDER ASSUMES NO LIABILITY FOR VARIATIONS, IF ANY, WITH AN ACTUAL SURVEY.



- 1-116-2
MICHAEL &
KATHRYN
LAMM
0.38 Ac.
- 1-116-3
ROY J &
JUDY A
KENNEY,
0.22 Ac.
- 1-116-32
LEO E
& ELLEN M
WINGATE
TRUSTEES
0.54 Ac.
- 1-116-63
JESSE GLEN &
WHITNEY JAYNE JONES
0.03 Ac.
- 1-116-67
BART E &
KATHY M
PETERSON
0.49 Ac.
- 1-116-75
GARY L &
JOLENE
STEVENS
1.55 Ac.
- 1-116-86
GEORGE J
HENDRICKSON
TRUSTEE ETAL
0.51 Ac.
- 1-116-88
ALONZO M
& MARCIE A
ZWAHLEN
0.49 Ac.
- 1-116-96
DALE O &
MILA LEA
ROPER TRUSTEES
0.63 Ac.
- 1-116-100
MARIBELLE B
WAREHAM,
TRUSTEE
0.28 Ac.
- 1-116-103
STEVEN P
& MEGAN M
LAMOREAUX
0.13 Ac.
- 1-116-104
TRAVIS
WINN
0.10 Ac.
- 1-116-105
ZACHARY P
& MINDY
CRAWFORD
0.11 Ac.
- 1-116-106
DIONNE
TUELLER
0.10 Ac.
- 1-116-108
FERRON CITY
0.23 Ac.
- 1-116-109
GARY JOSEPH
VELASCO
0.44 Ac.
- 1-116-114
JERRY L
& JANET K
DAMRON
0.25 Ac.
- 1-116-115
DALE O & MILA LEA
ROPER TRUSTEES,
ETAL
0.13 Ac.
- 1-116-116
KASEY K &
DIANA D
THOMPSON
0.16 Ac.
- 1-116-117
RANDY
& CAROL
HUNTER
0.52 Ac.
- 1-116-118
MARIBELLE B
WAREHAM,
TRUSTEE
0.15 Ac.
- 1-116-119
CHRISTOPHER R
& DAWN L
WINN
0.50 Ac.

1-116
16-20S-07E