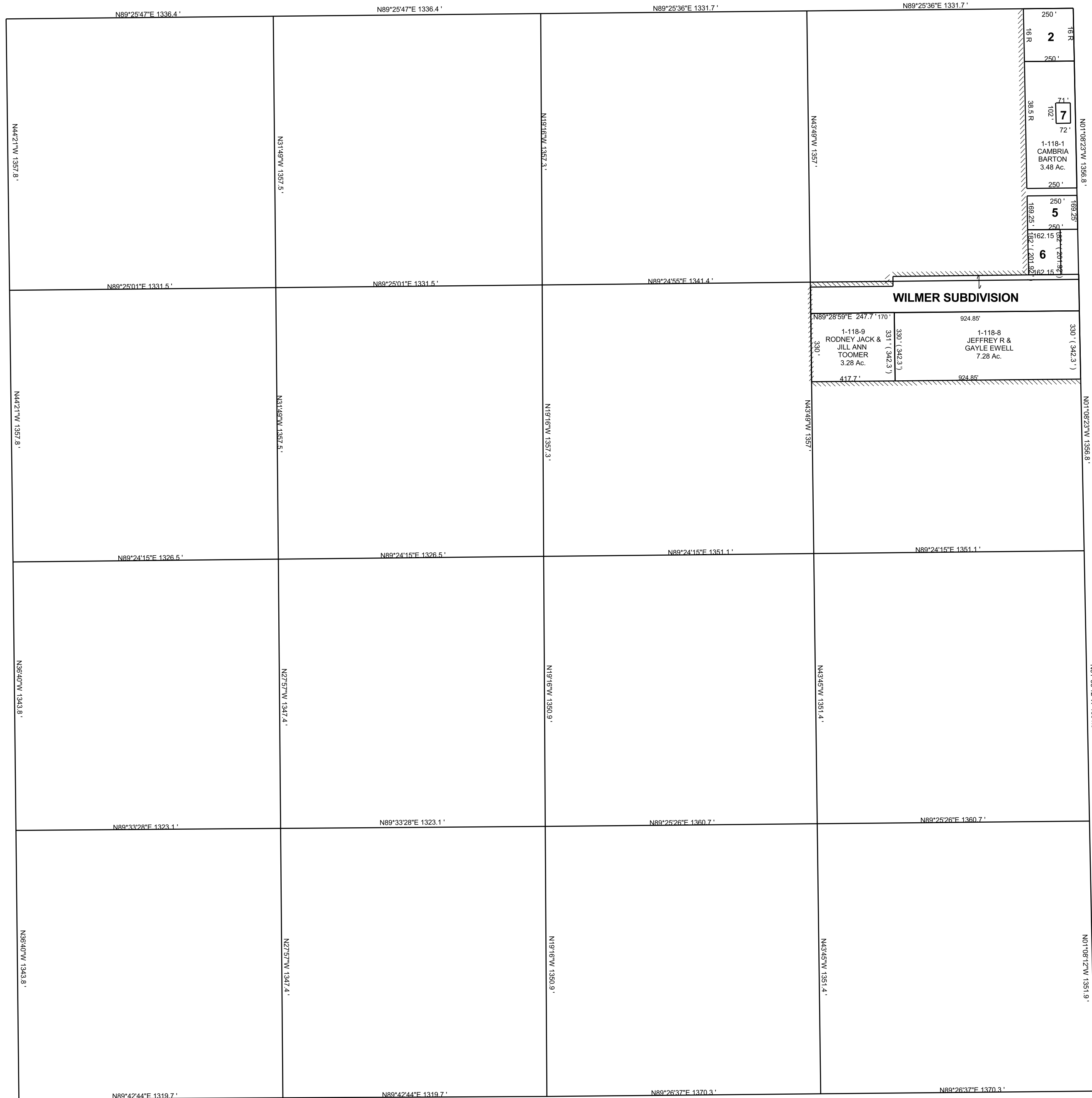


FERRON

SECTION 21, T 20 S, R 07 E S.L.B. & M.

THIS PLAT IS MADE SOLELY FOR THE PURPOSE OF ASSISTING IN LOCATING THE LAND, AND THE RECORDER ASSUMES NO LIABILITY FOR VARIATIONS, IF ANY, WITH AN ACTUAL SURVEY.



- 1-118-2
CAMBRIA
BARTON
1.52 Ac.
- 1-118-5
BRUCE CLYDE &
TED ANN FUNK
B & T BUILDERS
& SUPPLY DBA
1.00 Ac.
- 1-118-6
SCOTT GERALD
WILCOX
0.84 Ac.
- 1-118-7
DANIEL
VEDENOFF &
ANDREW
BARTON
0.17 Ac.