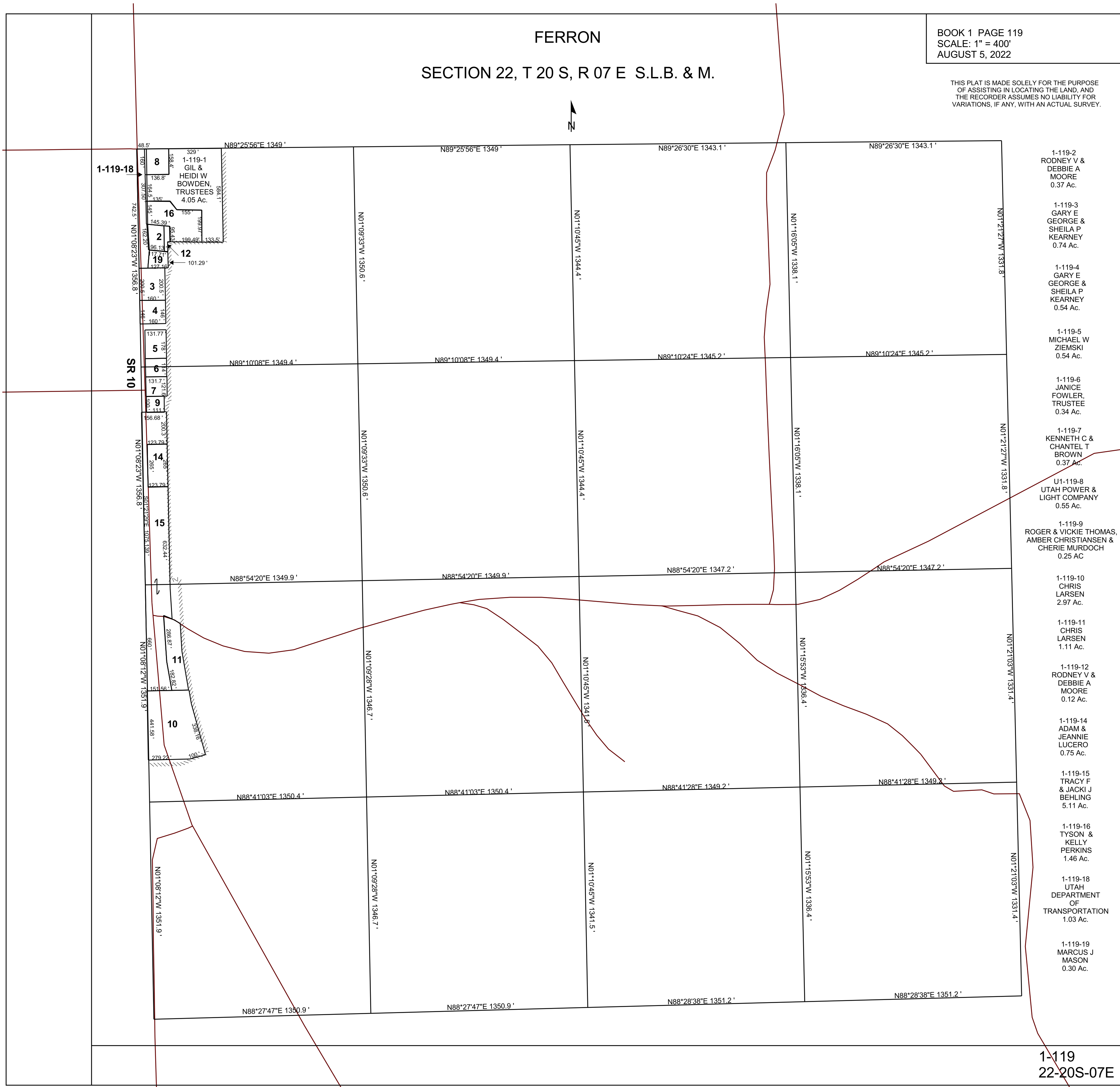


FERRON

SECTION 22, T 20 S, R 07 E S.L.B. & M.

BOOK 1 PAGE 119
SCALE: 1" = 400'
AUGUST 5, 2022

THIS PLAT IS MADE SOLELY FOR THE PURPOSE
OF ASSISTING IN LOCATING THE LAND, AND
THE RECORDER ASSUMES NO LIABILITY FOR
VARIATIONS, IF ANY, WITH AN ACTUAL SURVEY.



1-119-2
RODNEY V &
DEBBIE A
MOORE
0.37 Ac.

1-119-3
GARY E
GEORGE &
SHEILA P
KEARNEY
0.74 Ac.

1-119-4
GARY E
GEORGE &
SHEILA P
KEARNEY
0.54 Ac.

1-119-5
MICHAEL W
ZIEMSKI
0.54 Ac.

1-119-6
JANICE
FOWLER,
TRUSTEE
0.34 Ac.

1-119-7
KENNETH C &
CHANTEL T
BROWN
0.37 Ac.

U1-119-8
UTAH POWER &
LIGHT COMPANY
0.55 Ac.

1-119-9
ROGER & VICKIE THOMAS,
AMBER CHRISTIANSEN &
CHERIE MURDOCH
0.25 AC

1-119-10
CHRIS
LARSEN
2.97 Ac.

1-119-11
CHRIS
LARSEN
1.11 Ac.

1-119-12
RODNEY V &
DEBBIE A
MOORE
0.12 Ac.

1-119-14
ADAM &
JEANNIE
LUCERO
0.75 Ac.

1-119-15
TRACY F
& JACKI J
BEHLING
5.11 Ac.

1-119-16
TYSON &
KELLY
PERKINS
1.46 Ac.

1-119-18
UTAH
DEPARTMENT
OF
TRANSPORTATION
1.03 Ac.

1-119-19
MARCUS J
MASON
0.30 Ac.