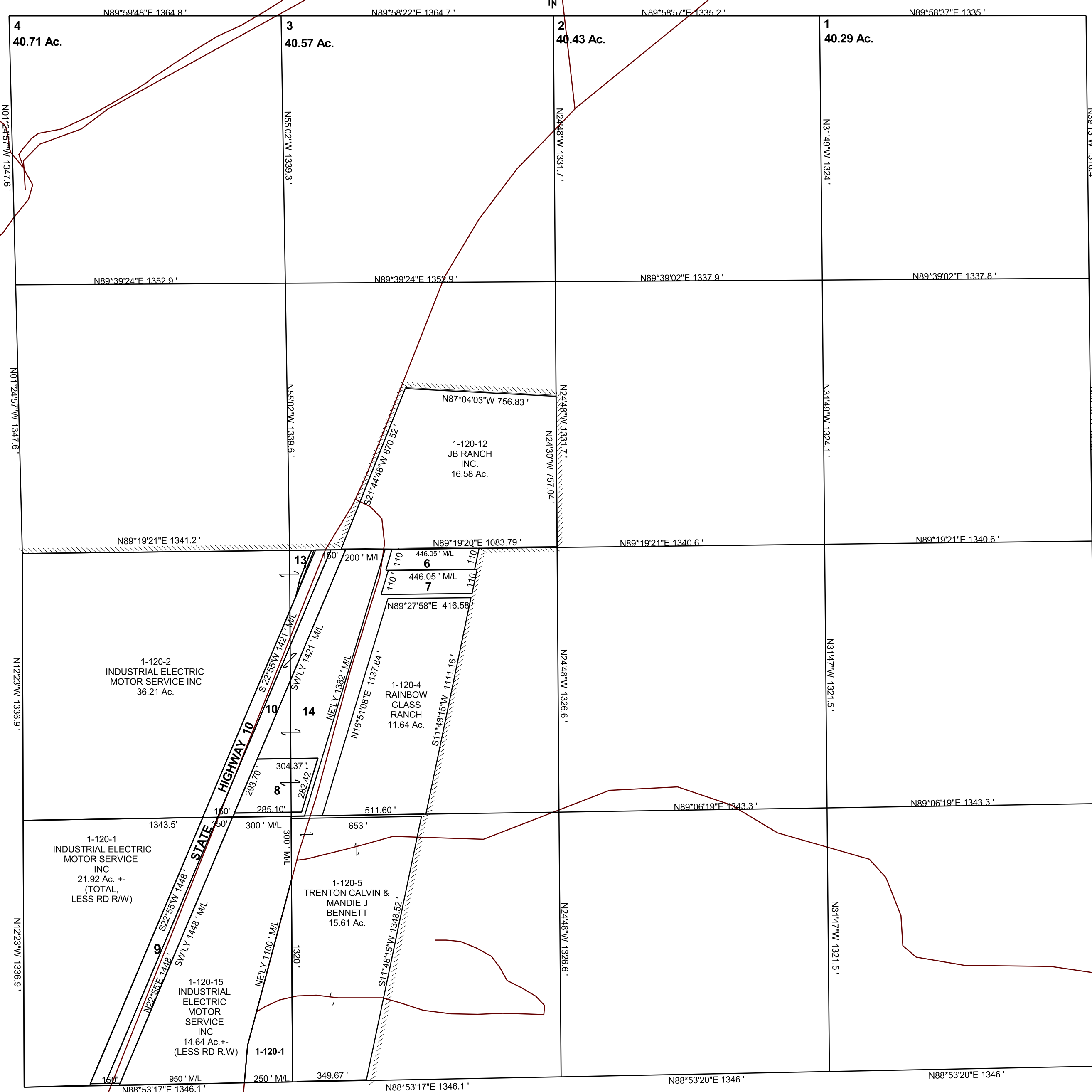


# FERRON

## SECTION 3, T 20 S, R 07 E S.L.B. & M.

THIS PLAT IS MADE SOLELY FOR THE PURPOSE OF ASSISTING IN LOCATING THE LAND, AND THE RECORDER ASSUMES NO LIABILITY FOR VARIATIONS, IF ANY, WITH AN ACTUAL SURVEY.



- 1-120-6 VAL WENDAL & JANICE BESS 1.08 Ac.
- 1-120-7 JERAD & SHAYNA HOUSEKEEPER 1.10 Ac.
- 1-120-8 HANK W & KADIE ALLRED 1.98 Ac.
- 1-120-9 STATE ROAD COMMISSION 4.58 Ac.
- 1-120-10 STATE ROAD COMMISSION 4.6 Ac.
- 1-120-13 STATE ROAD COMMISSION 0.06 Ac.
- 1-120-14 INDUSTRIAL ELECTRIC MOTOR SERVICE INC 6.56 Ac.