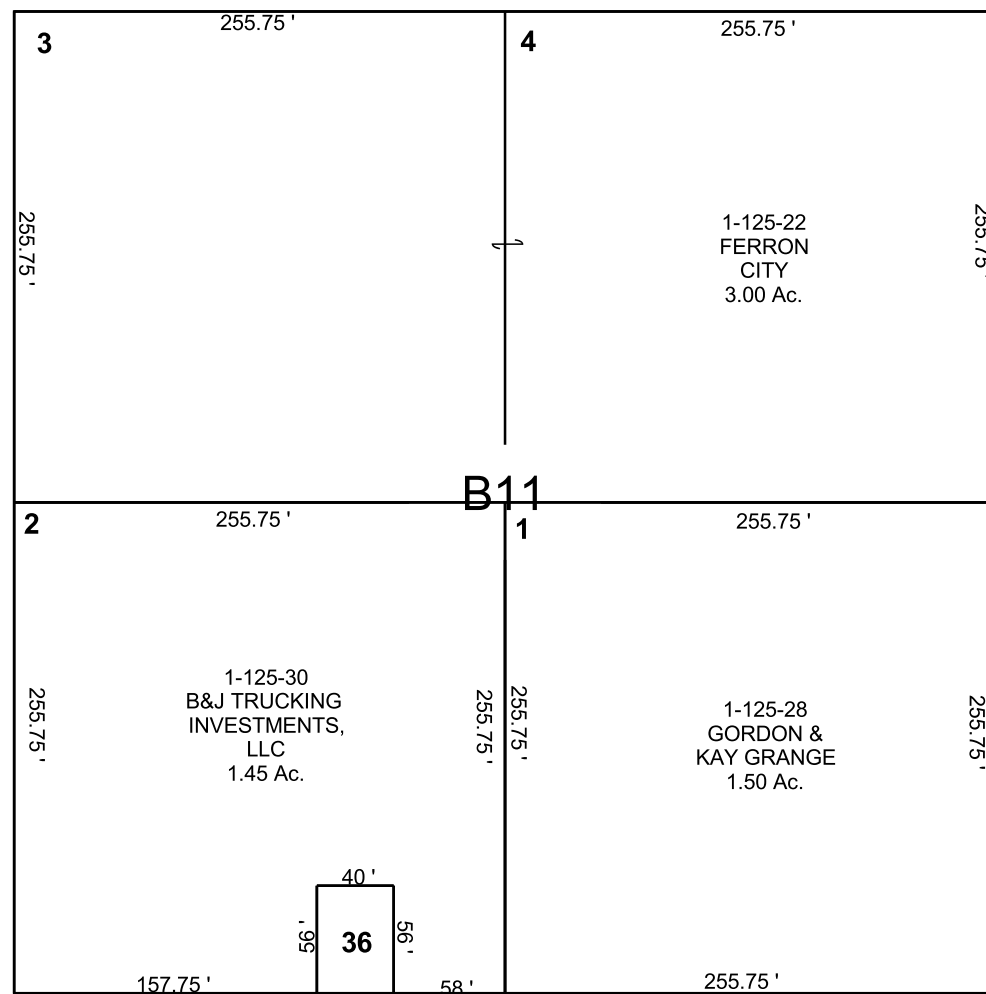


FERRON

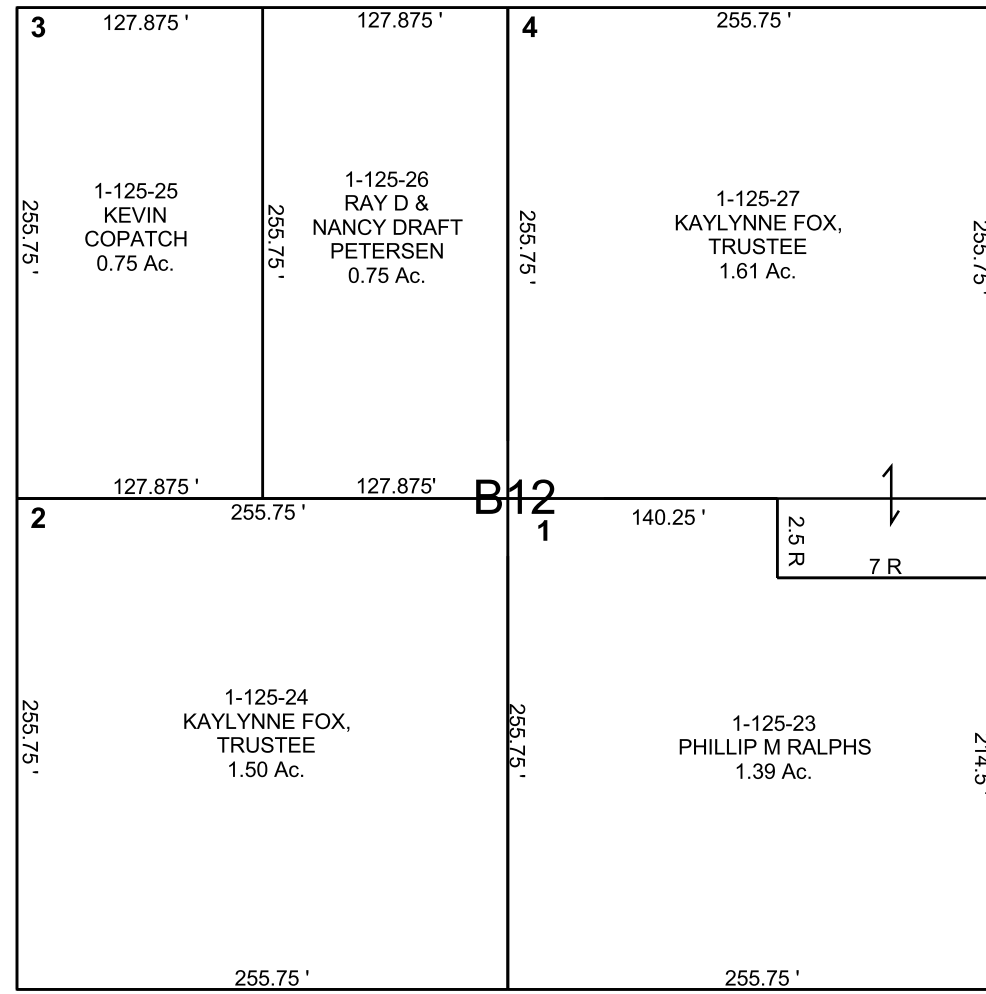
SW/4 SW/4 SECTION 10, T 20 S, R 07 E S.L.B. & M.

BOOK 1 PAGE 125  
SCALE: 1" = 100'  
NOVEMBER 7, 2022

THIS PLAT IS MADE SOLELY FOR THE PURPOSE OF ASSISTING IN LOCATING THE LAND, AND THE RECORDER ASSUMES NO LIABILITY FOR VARIATIONS, IF ANY, WITH AN ACTUAL SURVEY.

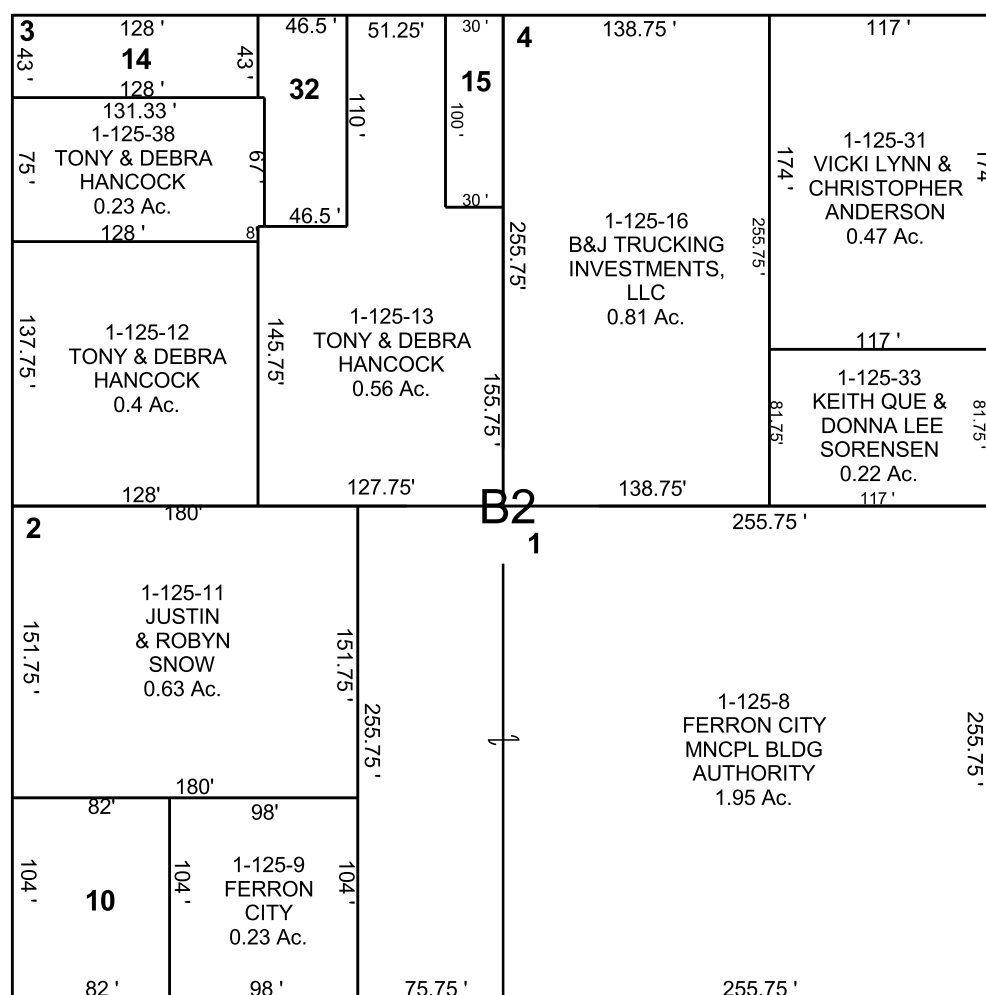


MAIN



STREET

- 1-125-10 JUSTIN & ROBYN SNOW 0.20 Ac.
- 1-125-14 FERRON CITY 0.13 Ac.
- 1-125-15 TONY & DEBRA HANCOCK 0.07 Ac.
- 1-125-32 GAYLAND A & JANEAL P DUGMORE 0.11 Ac.
- 1-125-36 B & J TRUCKING INVESTMENTS, LLC 0.05 Ac.
- 1-125-42 WESLEY C & CINDY K BREWER 0.08 Ac.



100 EAST

