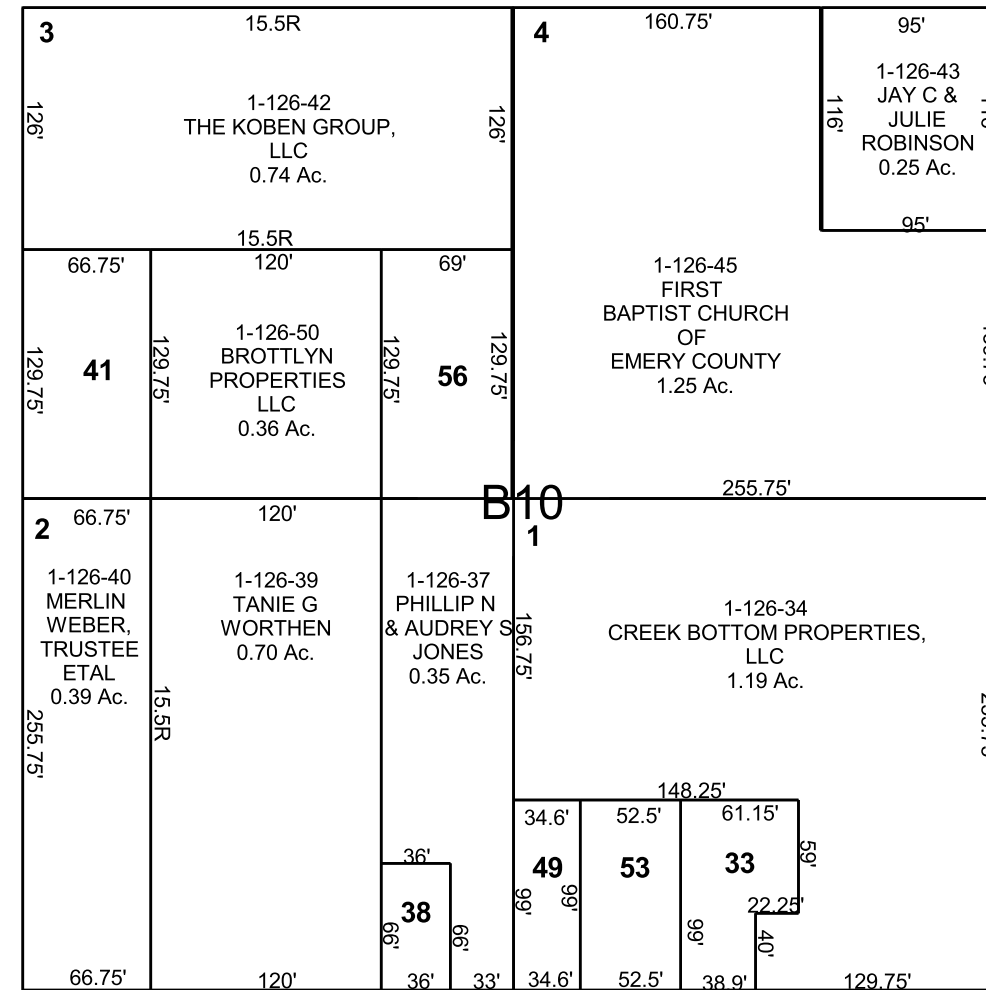
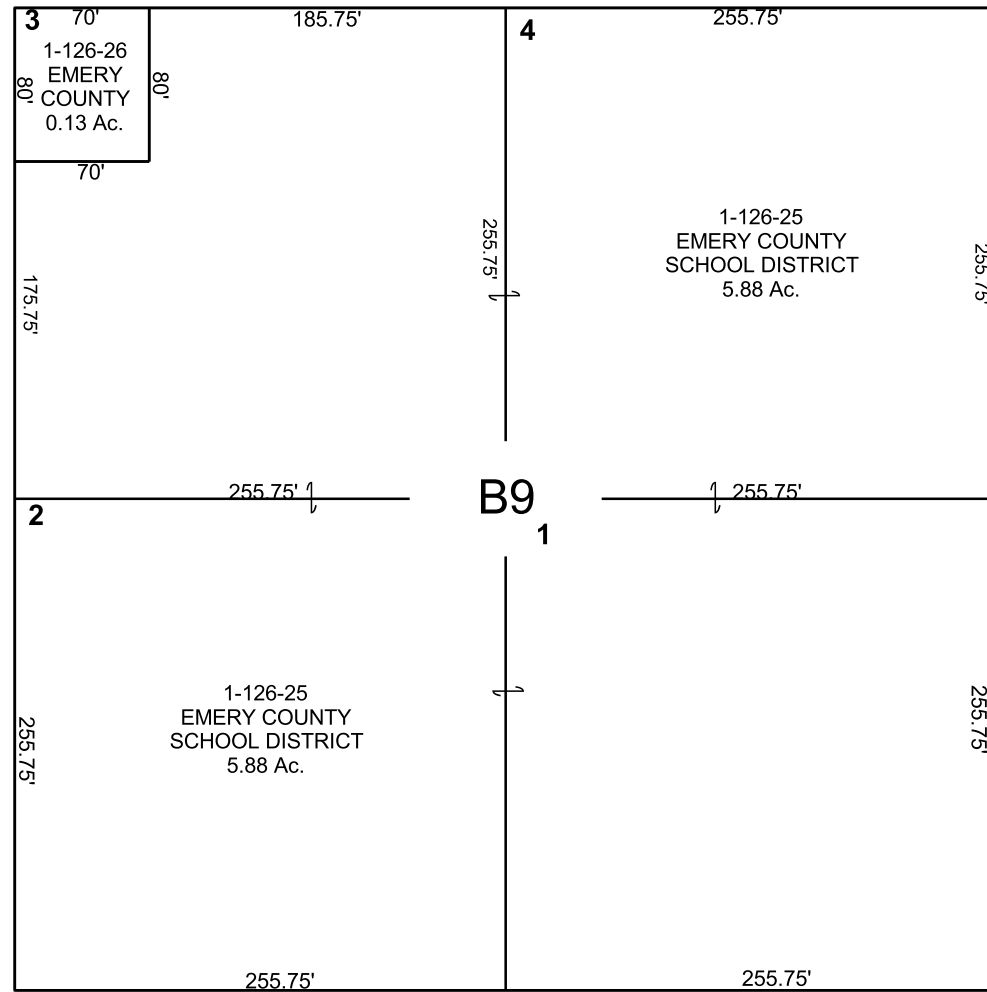


FERRON

SE/4 SE/4 SECTION 9, T 20 S, R 07 E S.L.B. & M.

THIS PLAT IS MADE SOLELY FOR THE PURPOSE OF ASSISTING IN LOCATING THE LAND, AND THE RECORDER ASSUMES NO LIABILITY FOR VARIATIONS, IF ANY, WITH AN ACTUAL SURVEY.



1-126-6 JOSEPH A & PAMELA R KUEFLER 0.13 Ac.

1-126-7 TODD G AUBERGER 0.13 Ac.

1-126-17 WILLIAM B TAYLOR 0.19 Ac.

1-126-18 CATHY MITCHELL 0.21 Ac.

1-126-19 BENJAMIN E & MEKETTE M TANEY 0.20 Ac.

1-126-21 DON W & LISA A SJOGREN TRUSTEES 0.16 Ac.

1-126-33 DESERTVIEW FEDERAL CREDIT UNION 0.12 Ac.

1-126-38 GARRETT & MARIA HORTON 0.05 Ac.

1-126-41 BROTTLYN PROPERTIES LLC 0.2 Ac.

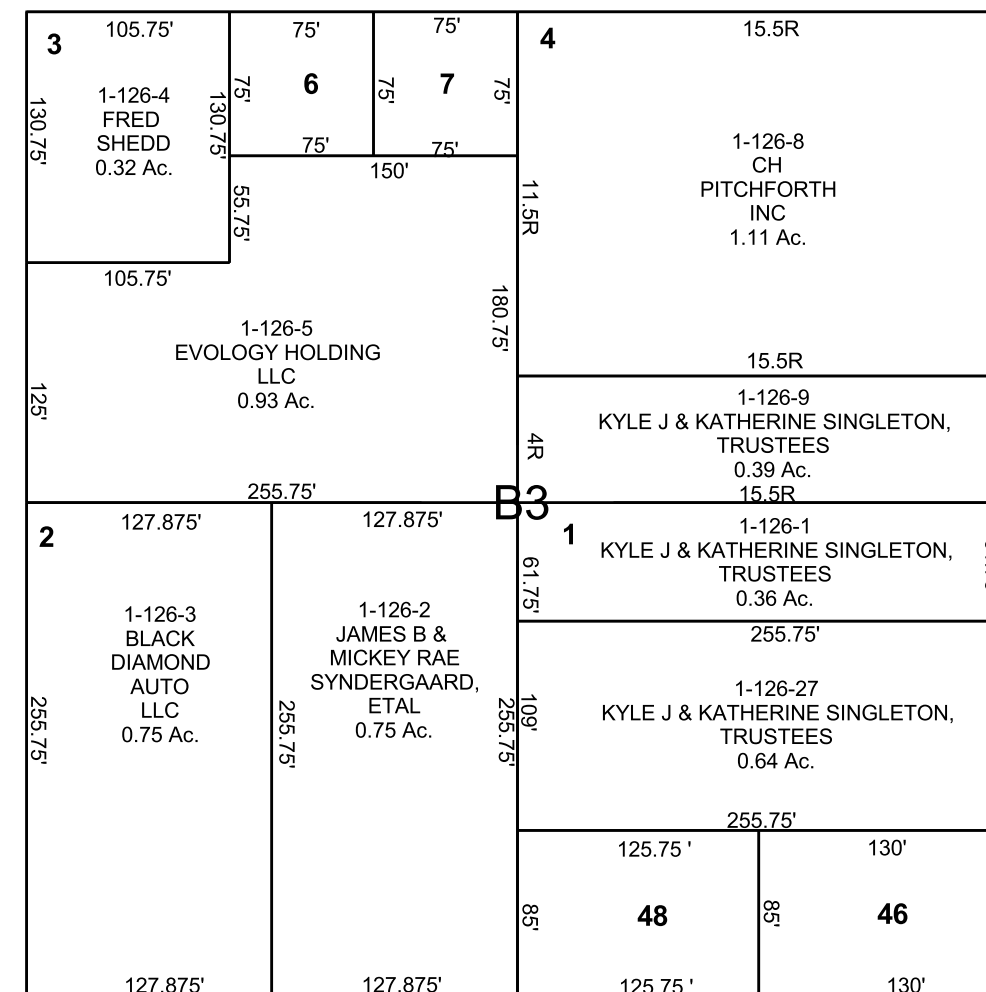
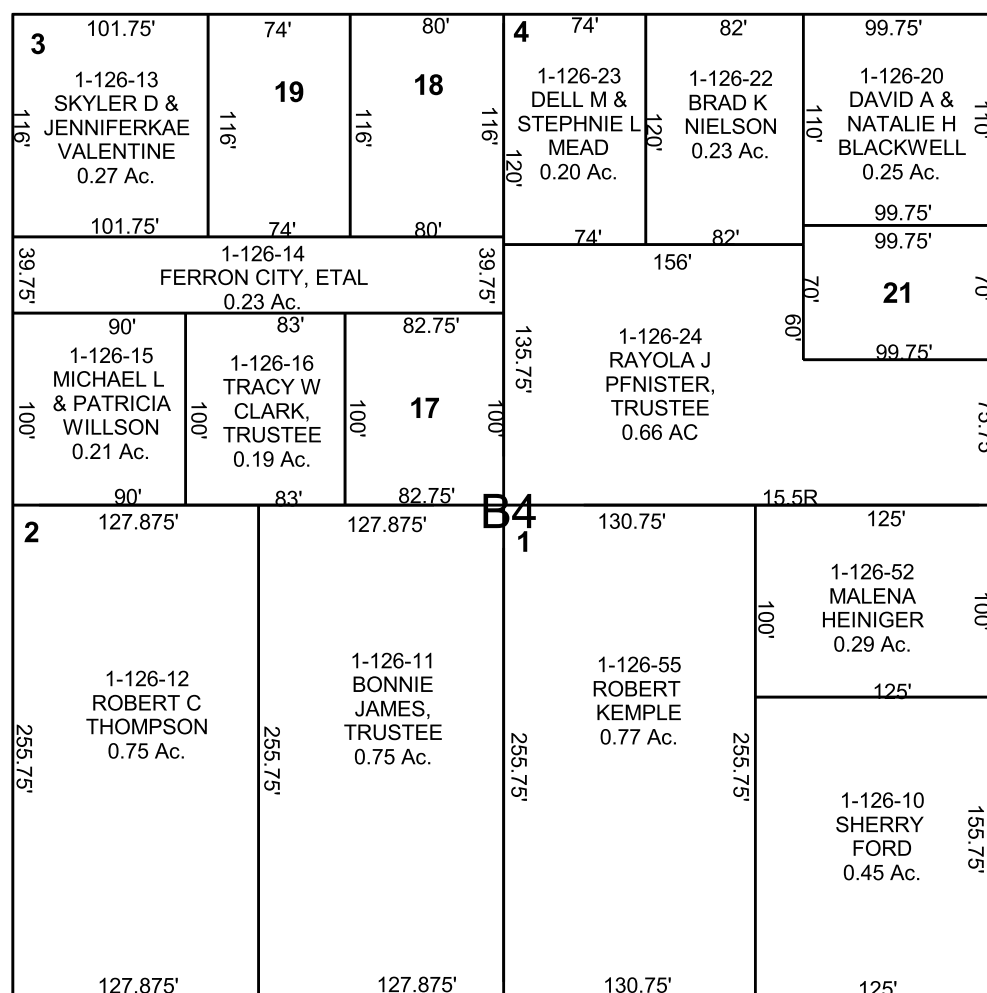
1-126-46 BLACK DRAGON RANCH, LLC, LLC 0.25 Ac.

1-126-48 INDUSTRIAL ELECTRIC MOTOR SERVICE CORPORATION 0.25 Ac.

1-126-49 LAWRENCE & RUTH DOW 0.08 Ac.

MAIN STREET

100 WEST



1-126-53 JARED HOWES 0.12 Ac.

1-126-56 BROTTLYN PROPERTIES LLC 0.21 Ac.

SE COR. SEC. 9