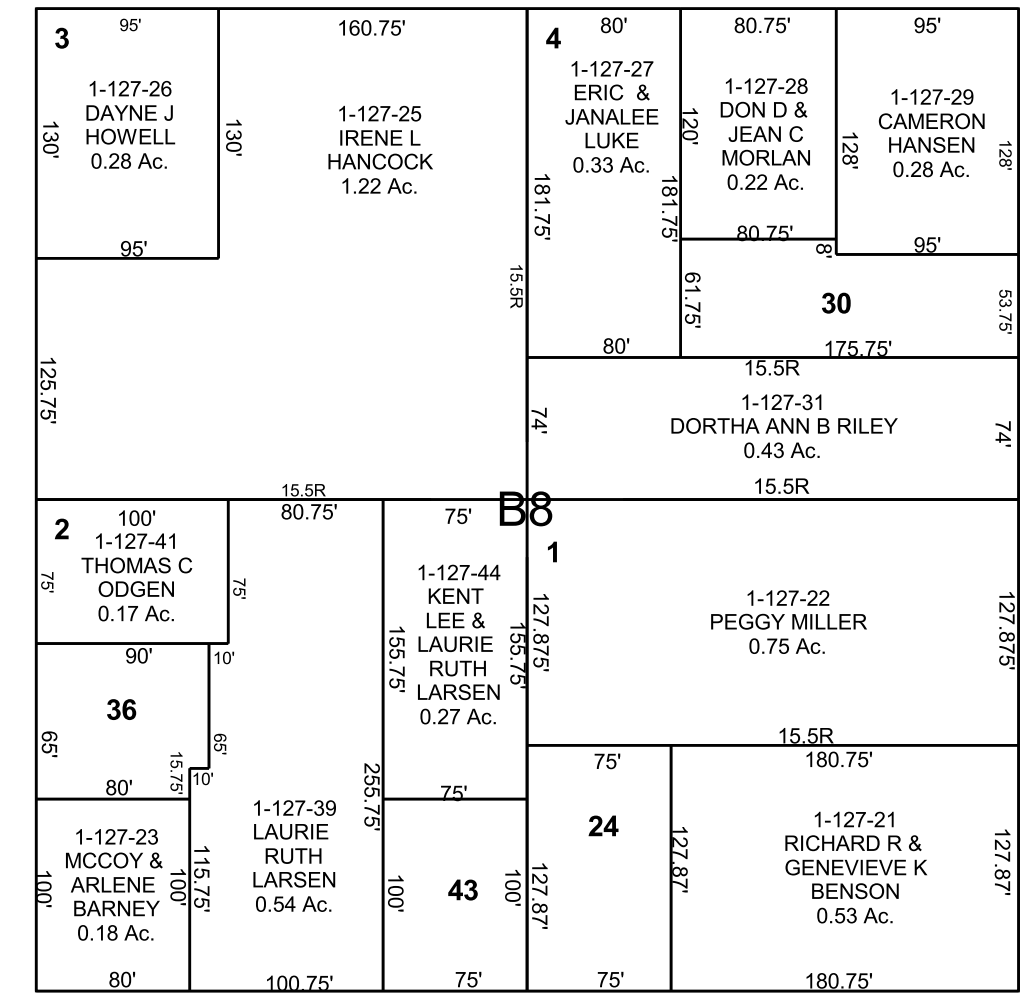
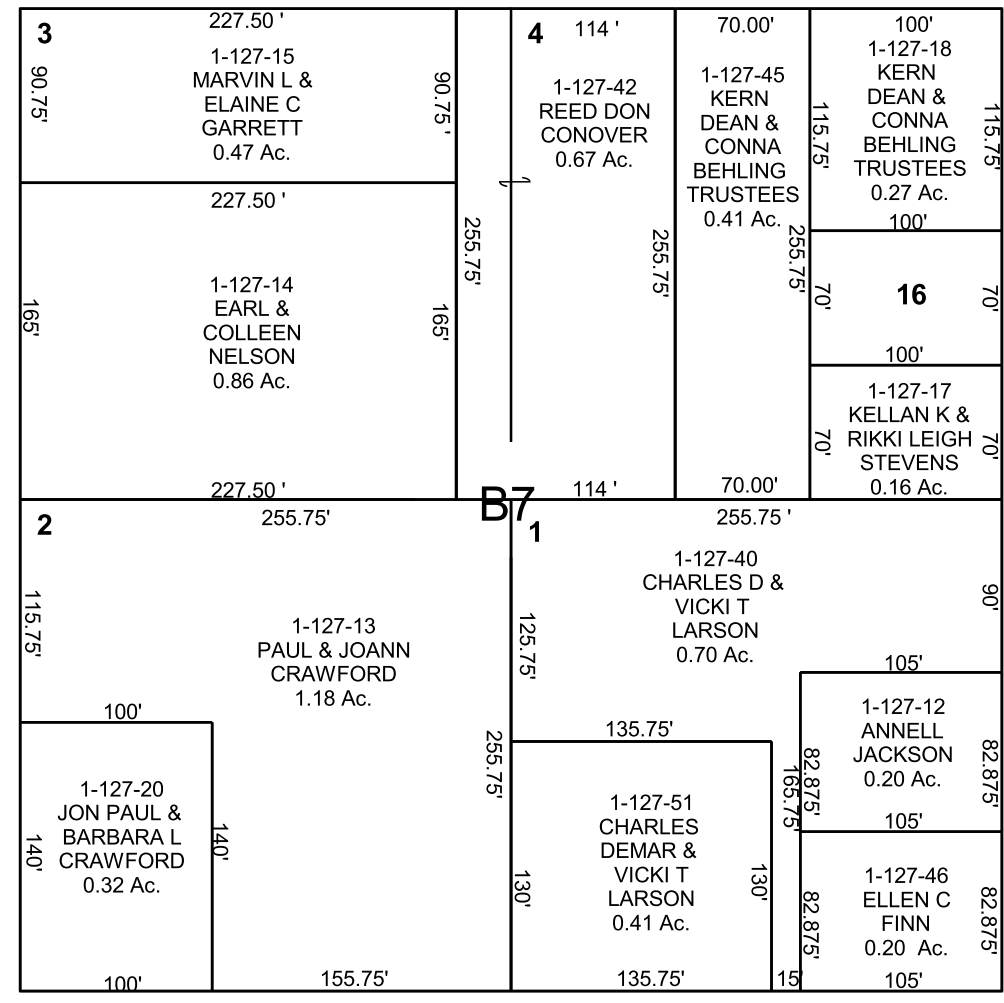
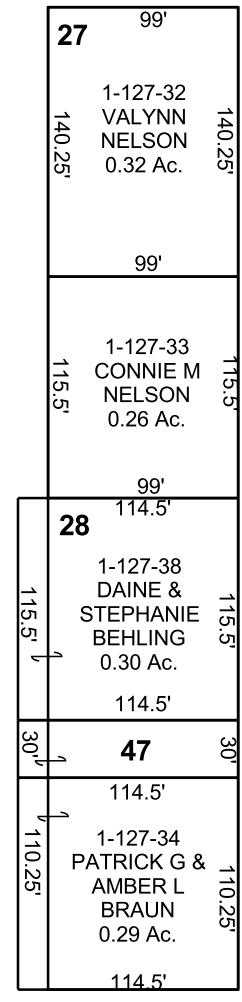


FERRON

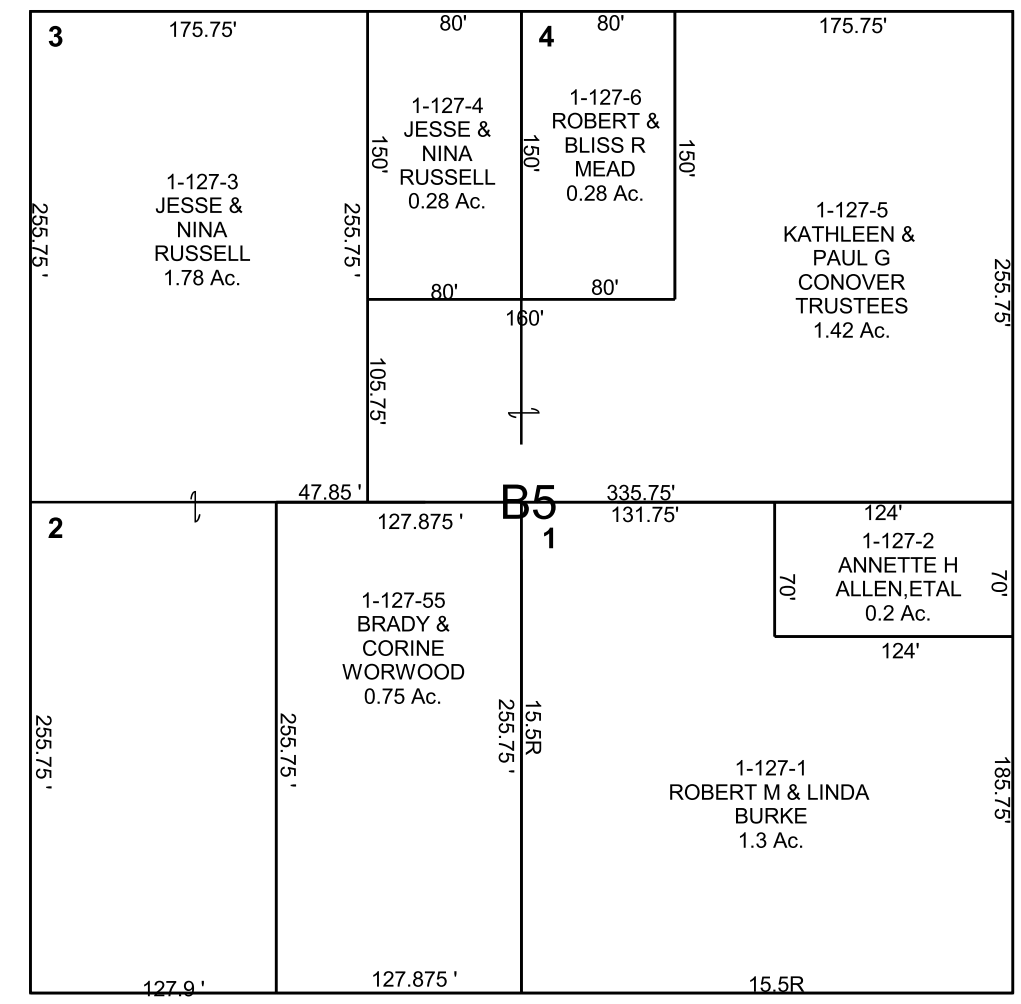
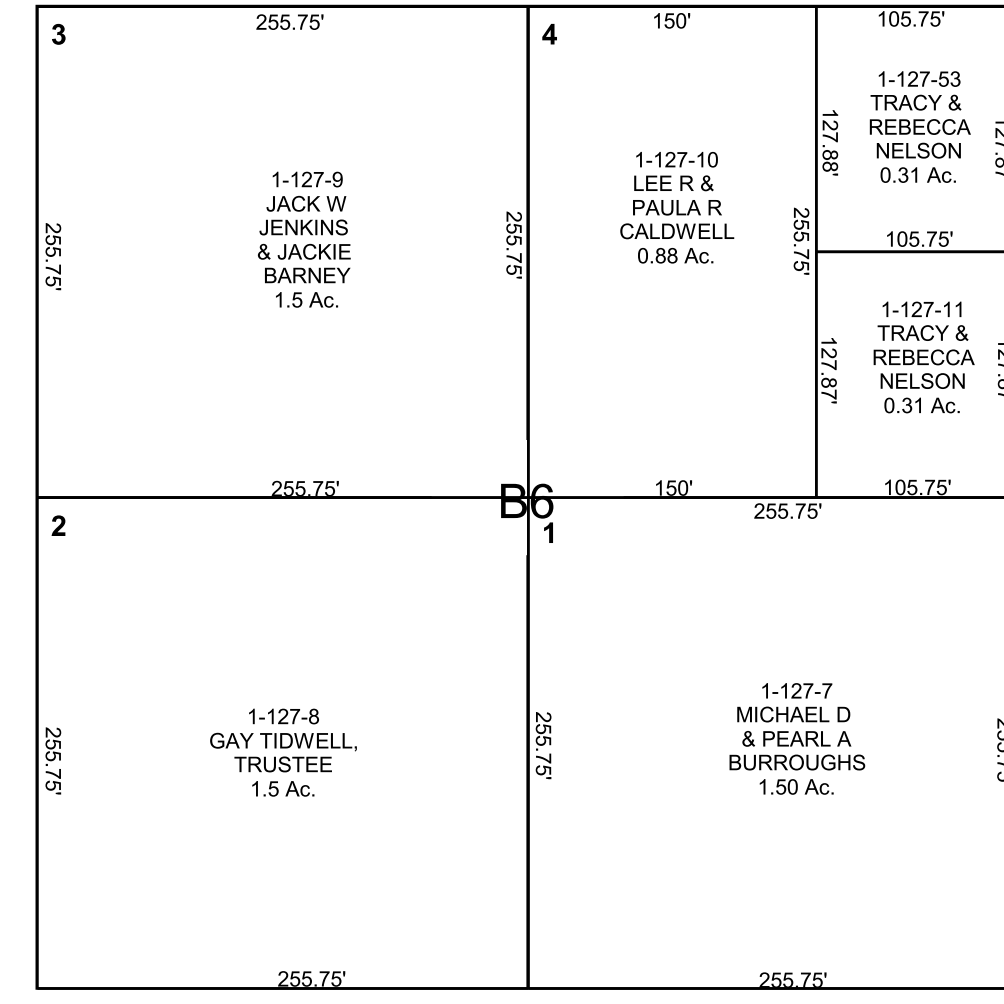
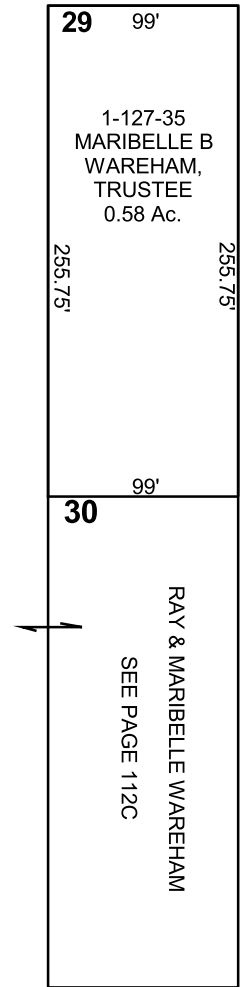
SW/4 SE/4 SECTION 9, T 20 S, R 07 E S.L.B. & M.

THIS PLAT IS MADE SOLELY FOR THE PURPOSE OF ASSISTING IN LOCATING THE LAND, AND THE RECORDER ASSUMES NO LIABILITY FOR VARIATIONS, IF ANY, WITH AN ACTUAL SURVEY.



- 1-127-16 KADE L & HEATHER A HUNTINGTON, 0.16 Ac.
- 1-127-24 JEREMY J & SUZETTE ELISE PACE, 0.22 Ac.
- 1-127-30 TINY TOWNS R.E. LLC, 0.23 Ac.
- 1-127-36 THOMAS A & MARGARET A REYNOLDS, 0.16 Ac.
- T1-127-37 EMERY TELEPHONE, 0.07 Ac.
- 1-127-43 KENT LEE & LAURIE RUTH LARSEN, 0.17 Ac.
- 1-127-47 EMERY COUNTY, 0.08 Ac.

MAIN STREET



S 1/4 COR. SEC. 9