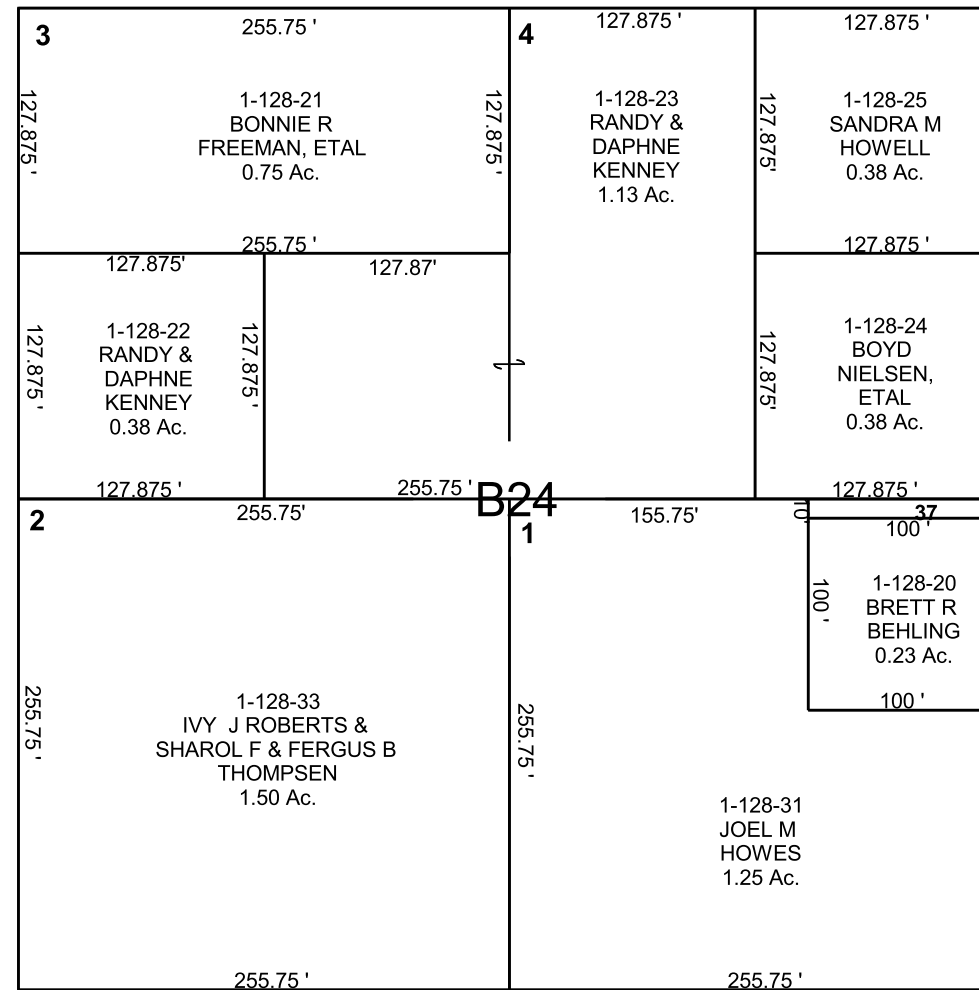
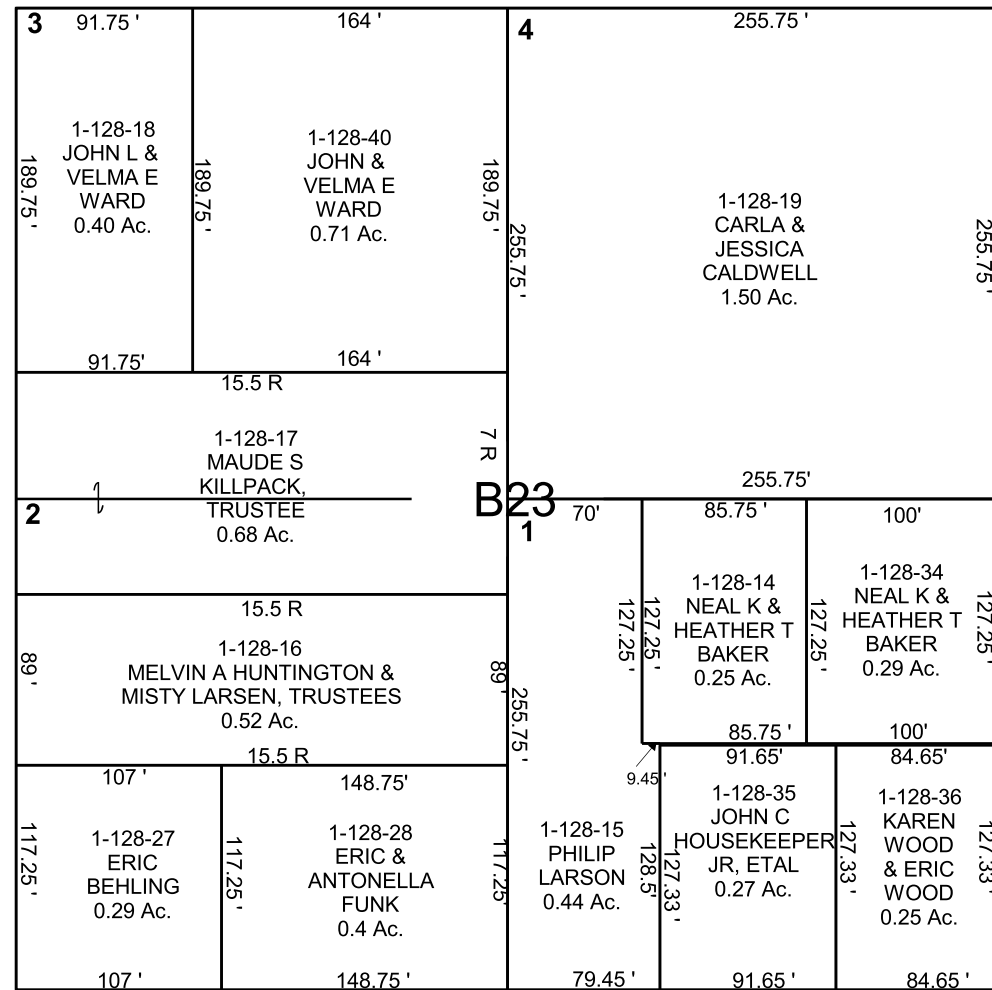


THIS PLAT IS MADE SOLELY FOR THE PURPOSE OF ASSISTING IN LOCATING THE LAND, AND THE RECORDER ASSUMES NO LIABILITY FOR VARIATIONS, IF ANY, WITH AN ACTUAL SURVEY.

FERRON

NW/4 SW/4 SECTION 10, T 20 S, R 07 E S.L.B. & M.

W 1/4 COR. SEC. 10



1-128-37  
 EMERY COUNTY  
 0.02 Ac.

1-128-41  
 JOHN L &  
 VELMA E  
 WARD  
 0.13 Ac.

200

NORTH

