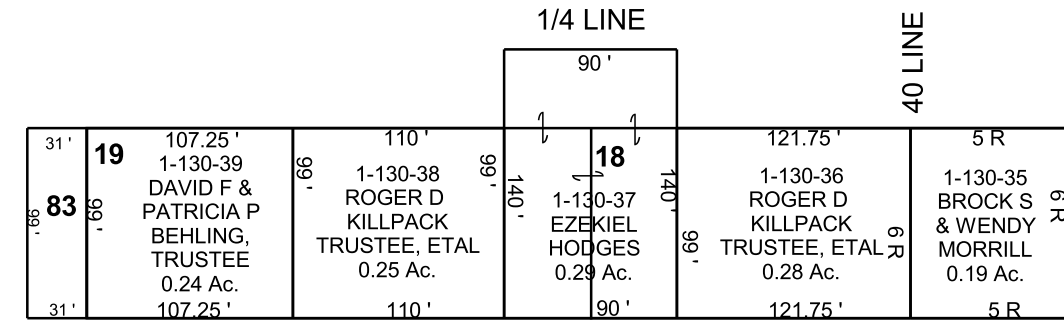
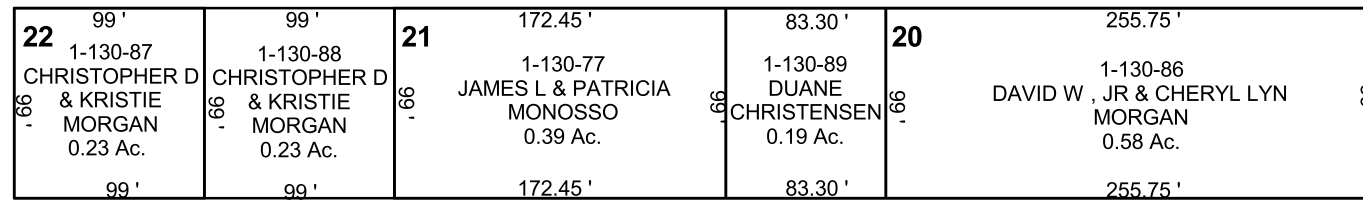


FERRON

NW/4 SE/4 SECTION 9, T 20 S, R 7 E S.L.B. & M.

BOOK 1 PAGE 130
SCALE: 1" = 100'
JANUARY 13, 2023

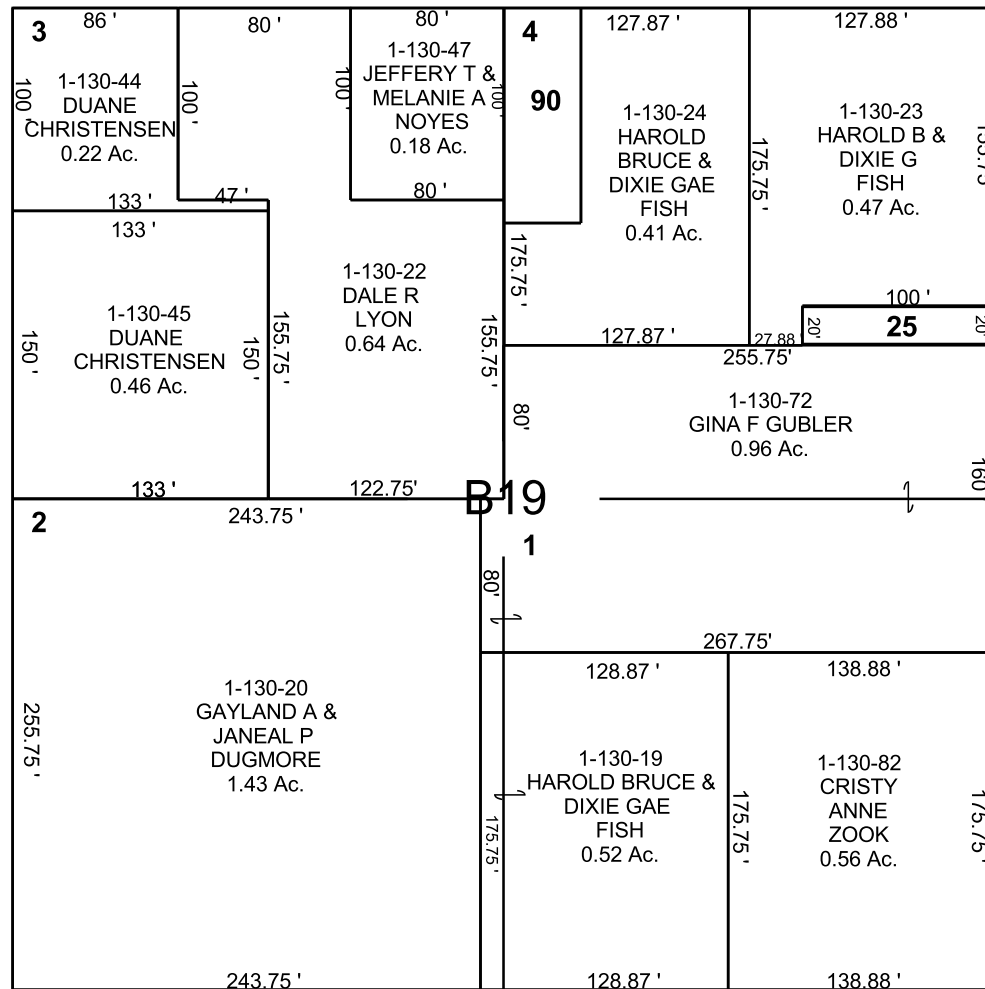
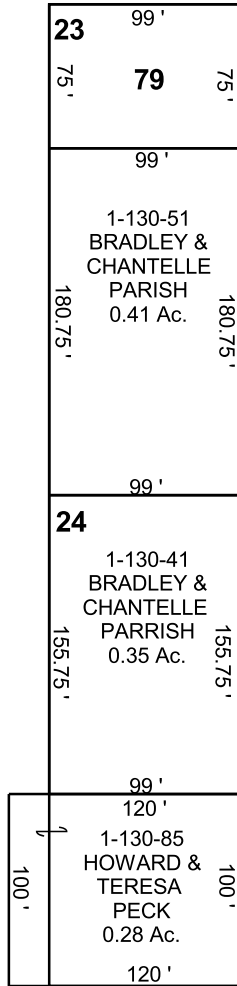
THIS PLAT IS MADE SOLELY FOR THE PURPOSE OF ASSISTING IN LOCATING THE LAND, AND THE RECORDER ASSUMES NO LIABILITY FOR VARIATIONS, IF ANY, WITH AN ACTUAL SURVEY.



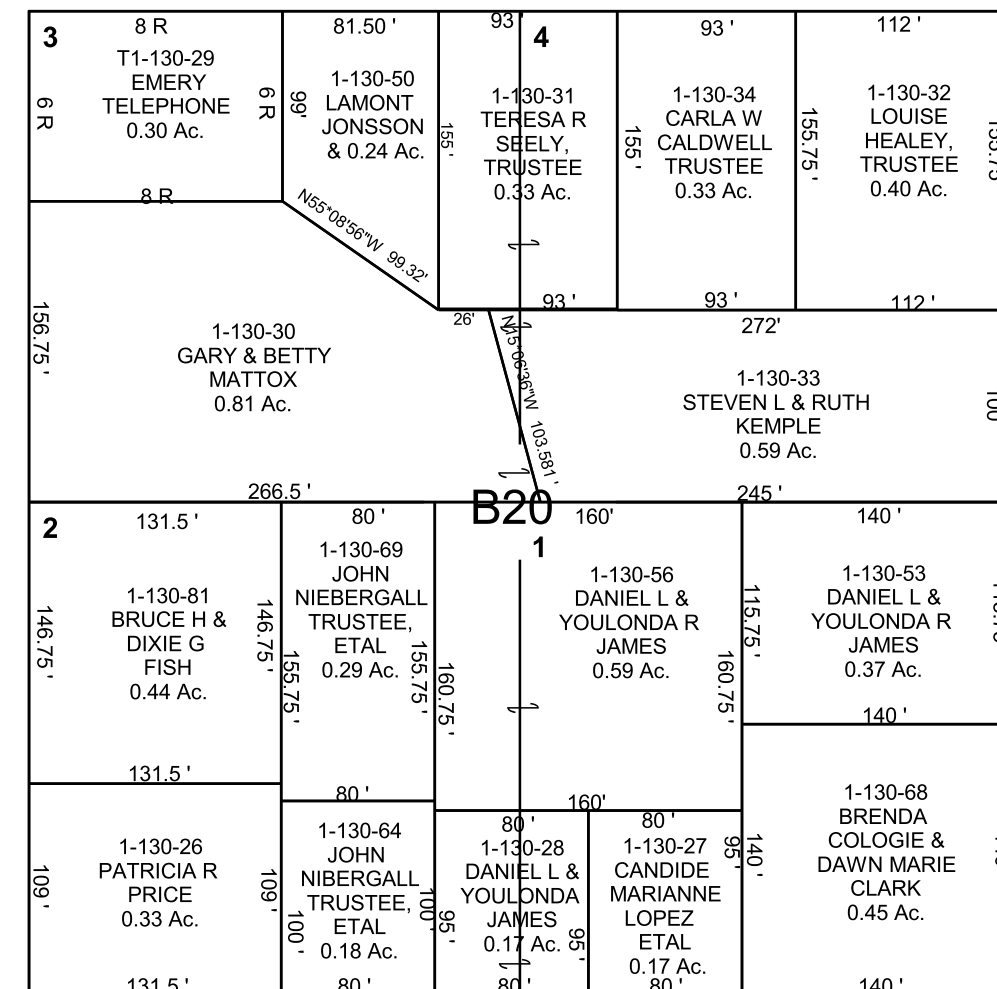
1-130-1
220 MILL RD LLC
0.19 Ac.

300 NORTH

300 NORTH



300 WEST



1-130-2
RICHARD MERDES
0.12 Ac.

1-130-8
GAIL R OAKESON TRUSTEE, ETAL
0.20 Ac.

1-130-15
VANCE EUGENE & BOBBI LEE BROWN
0.047 Ac.

1-130-25
HAROLD BRUCE & DIXIE GAE FISH
0.046 Ac.

1-130-61
KEITH Q & DONNA L SORENSEN TRUSTEES
0.077 Ac.

1-130-74
JAMES W & KELLY SUE PYPHER
0.14 Ac.

1-130-79
CALEB TEERLINK
0.17 Ac.

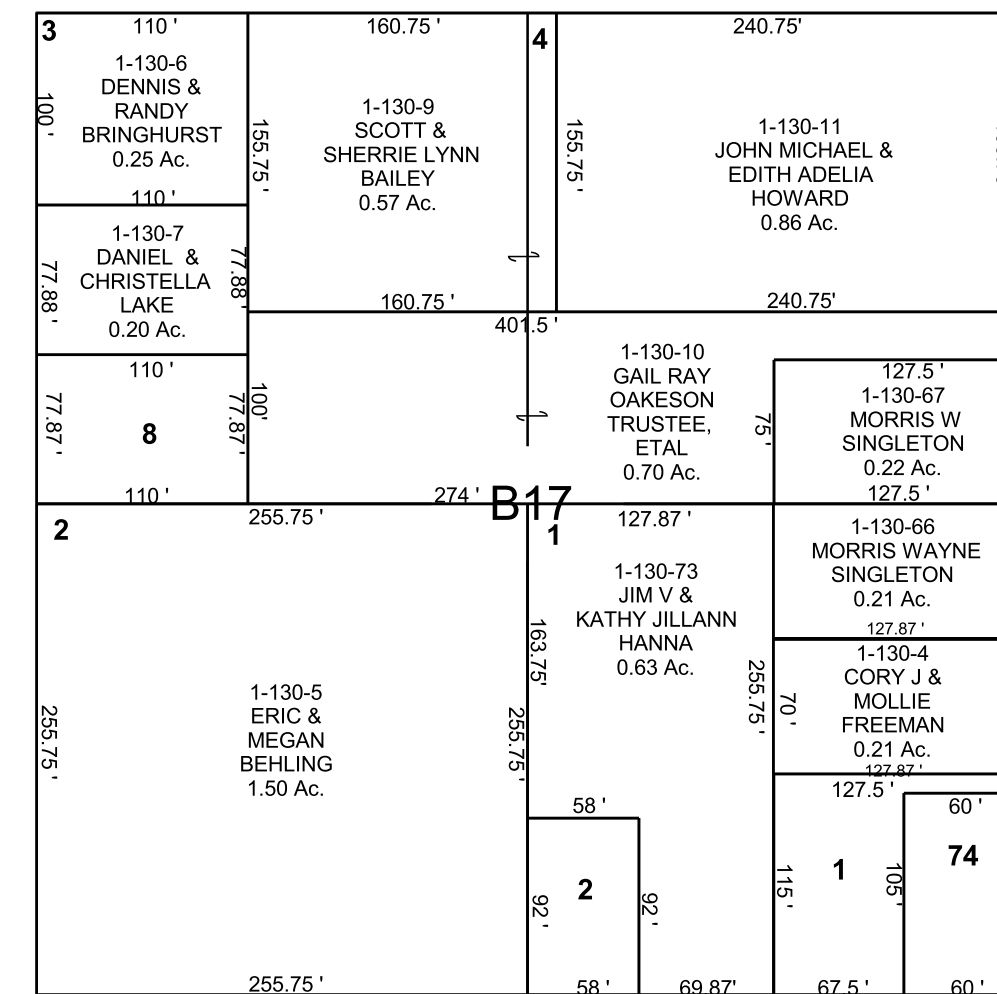
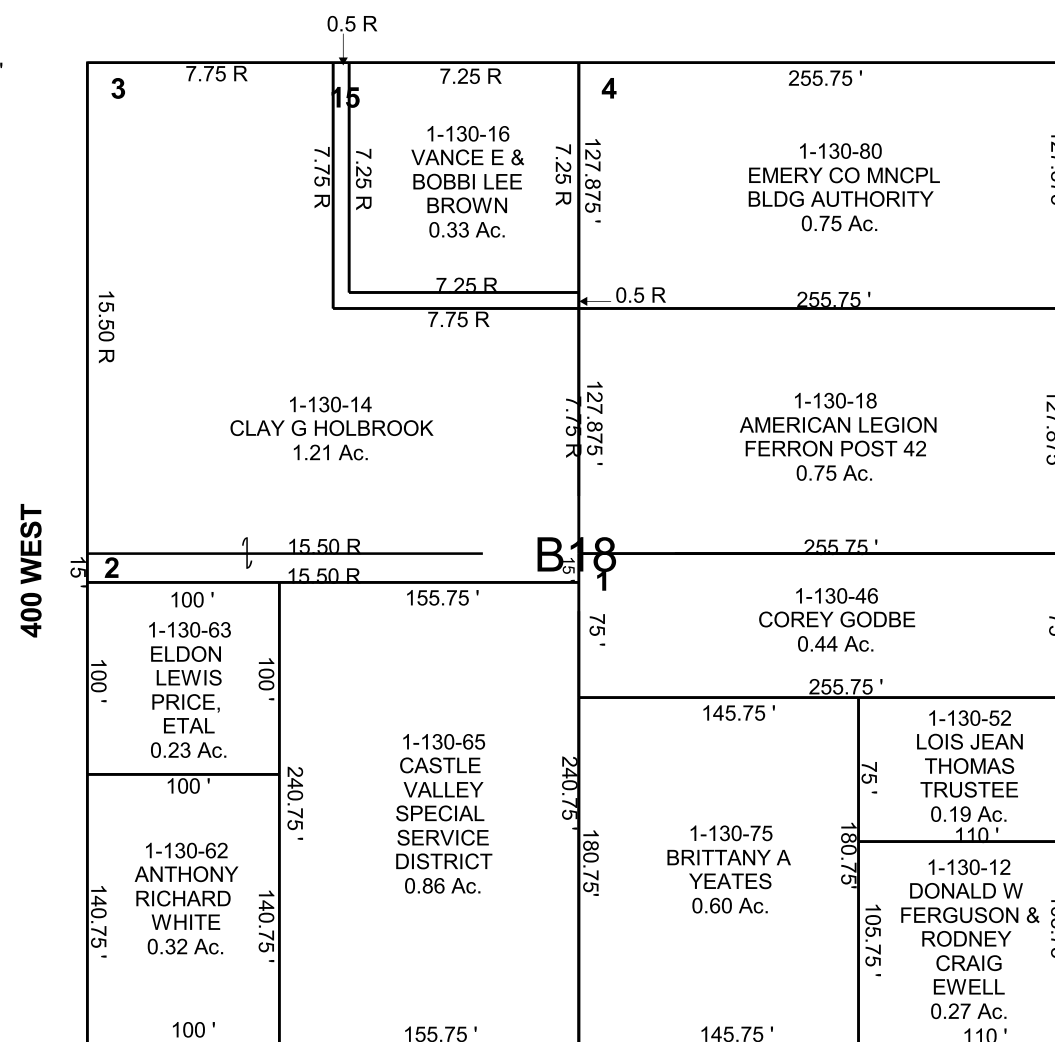
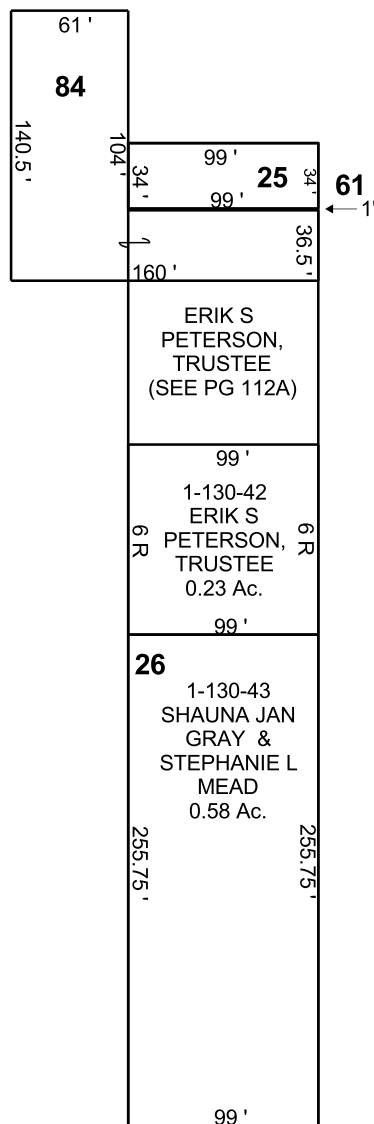
1-130-83
DAVID F & PATRICIA P BEHLING
0.07 Ac.

1-130-84
HOWARD & TERESA PECK
0.28 Ac.

1-130-90
JEFF T & MELANIE A NOYES
0.11 Ac.

200 NORTH

300 WEST



1-130
9-20S-07E