

GREEN RIVER

SECTION 10, T 21 S, R 16 E S.L.B. & M.

THIS PLAT IS MADE SOLELY FOR THE PURPOSE OF ASSISTING IN LOCATING THE LAND, AND THE RECORDER ASSUMES NO LIABILITY FOR VARIATIONS, IF ANY, WITH AN ACTUAL SURVEY.



SEE BK 6 PG 73

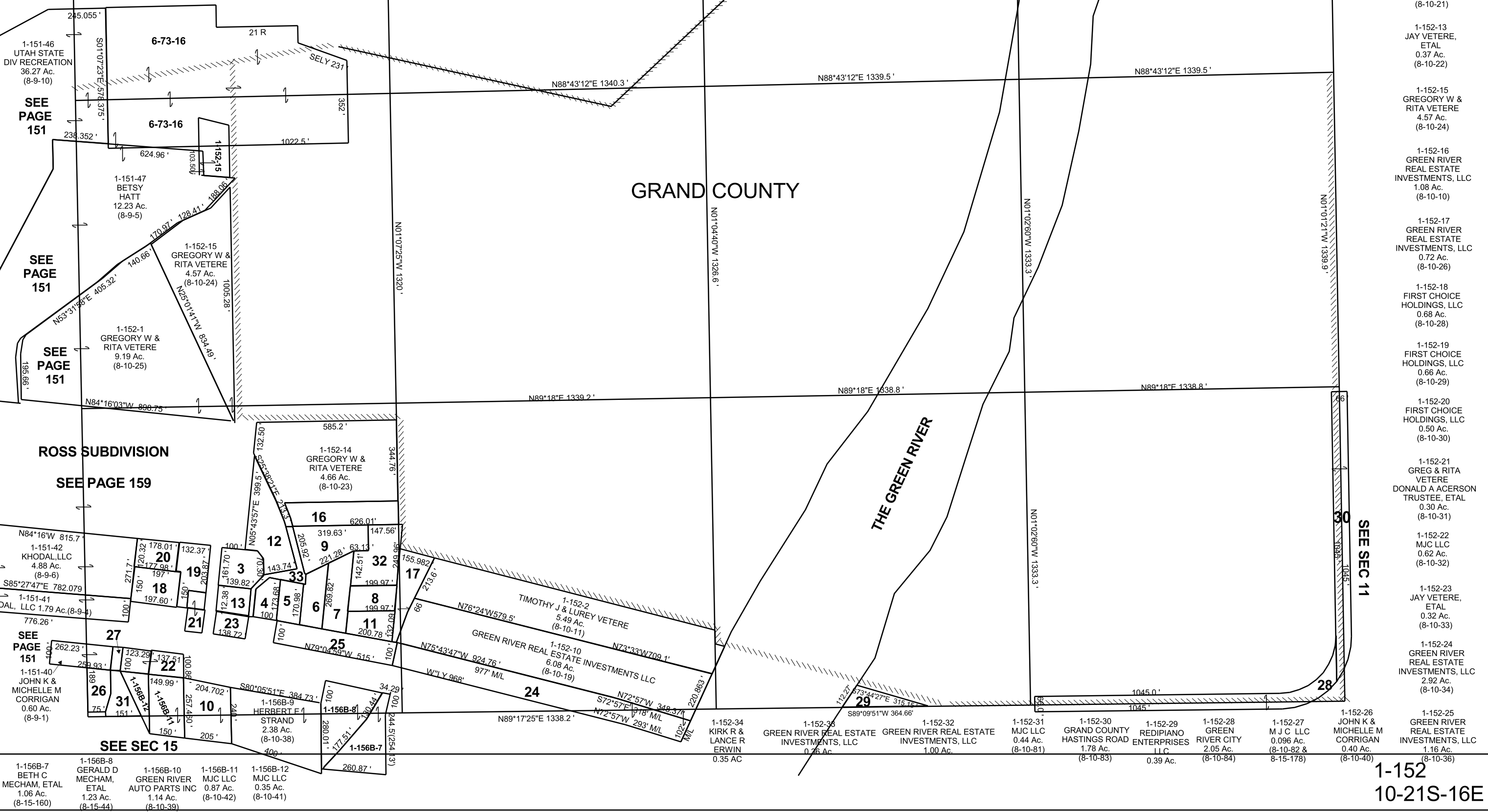
SEE BK 6 PG 73

EMERY COUNTY

GRAND COUNTY

THE GREEN RIVER

SEE SEC 11



1-152  
10-21S-16E