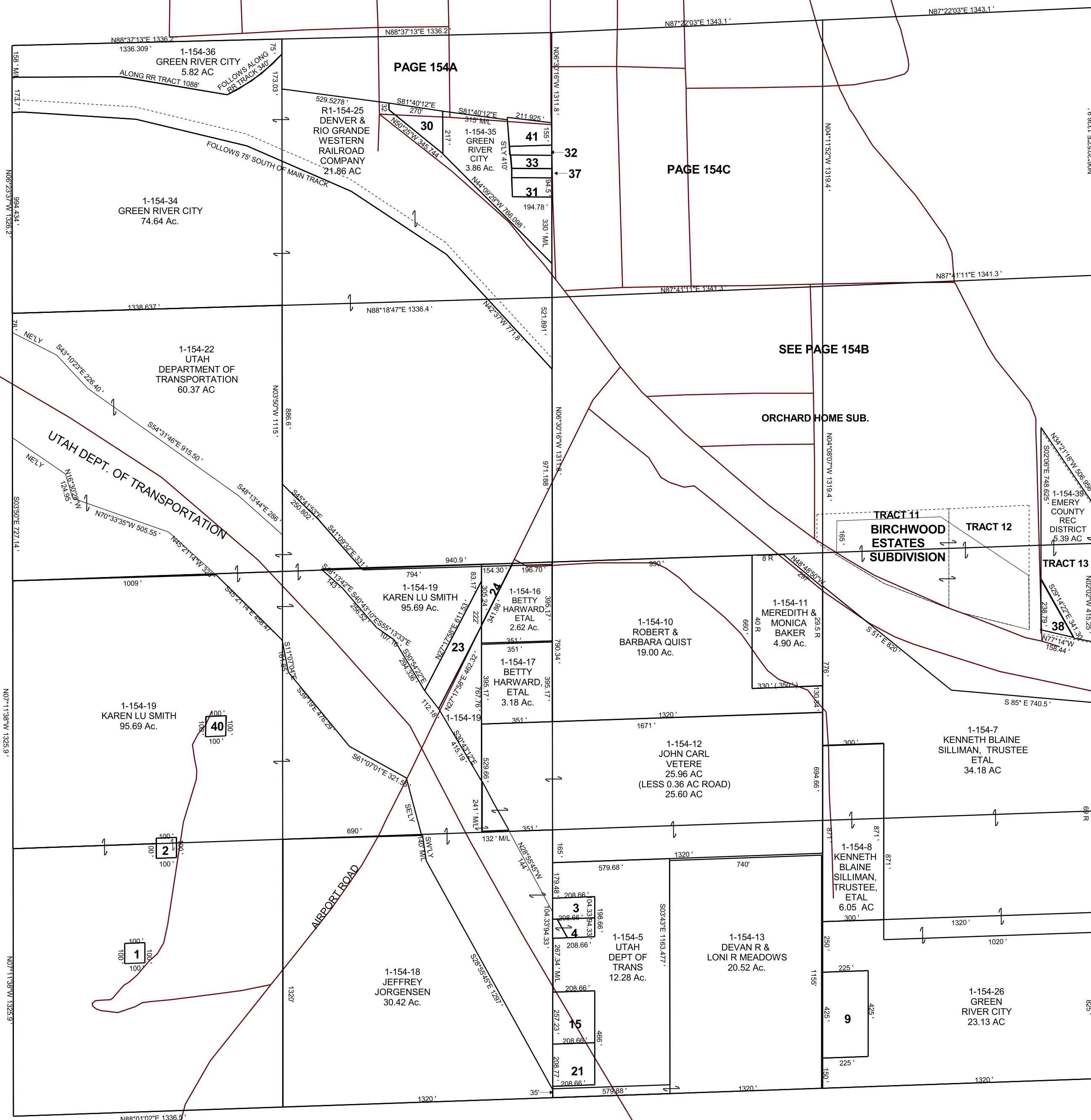


GREEN RIVER TOWNSITE
SECTION 16, T 21 S, R 16 E S.L.B. & M.

THIS PLAT IS MADE SOLELY FOR THE PURPOSE
OF ASSISTING IN LOCATING THE LAND, AND
THE RECORDER ASSUMES NO LIABILITY FOR
VARIATIONS, IF ANY, WITH AN ACTUAL SURVEY.



- U1-154-1
PACIFICORP
DBA
UTAH POWER
0.23 Ac.
- 1-154-2
GREEN
RIVER CITY
0.23 Ac.
- 1-154-3
UTAH
DEPT OF
TRANS
0.50 Ac.
- 1-154-4
UTAH
DEPT OF
TRANS
0.44 Ac.
- 1-154-9
GREEN
REIVER CITY
2.19 Ac.
- 1-154-15
UTAH
DEPT OF
TRANS
1.23 Ac.
- 1-154-21
UTAH
DEPT OF
TRANS
1.00 Ac.
- 1-154-23
EMERY
COUNTY
1.25 Ac.
- 1-154-24
EMERY
COUNTY
0.55 Ac.
- 1-154-28
G STEVEN
RAPICH, ETAL
0.076 Ac.
- 1-154-30
GREEN
RIVER CITY
0.76 Ac.
- 1-154-31
RACHEL YVETTE
CRESTO
0.43 Ac.
- 1-154-32
EARL D &
STEPHANIE
HALES
0.22 Ac.
- 1-154-33
RANDY GUY &
KARMIN K
FORD
0.30 Ac.
- 1-154-37
BEN &
KRISTINA
FARNSWORTH
0.21 Ac.
- 1-154-38
GREEN
RIVER CITY
0.47 Ac.
- T1-154-40
NCWPSC
MPL 35-YEAR
SITES TOWER
HOLDINGS, LLC
0.23 Ac.
- 1-154-41
DAVID &
TRACY
FARNSWORTH
0.62 Ac.