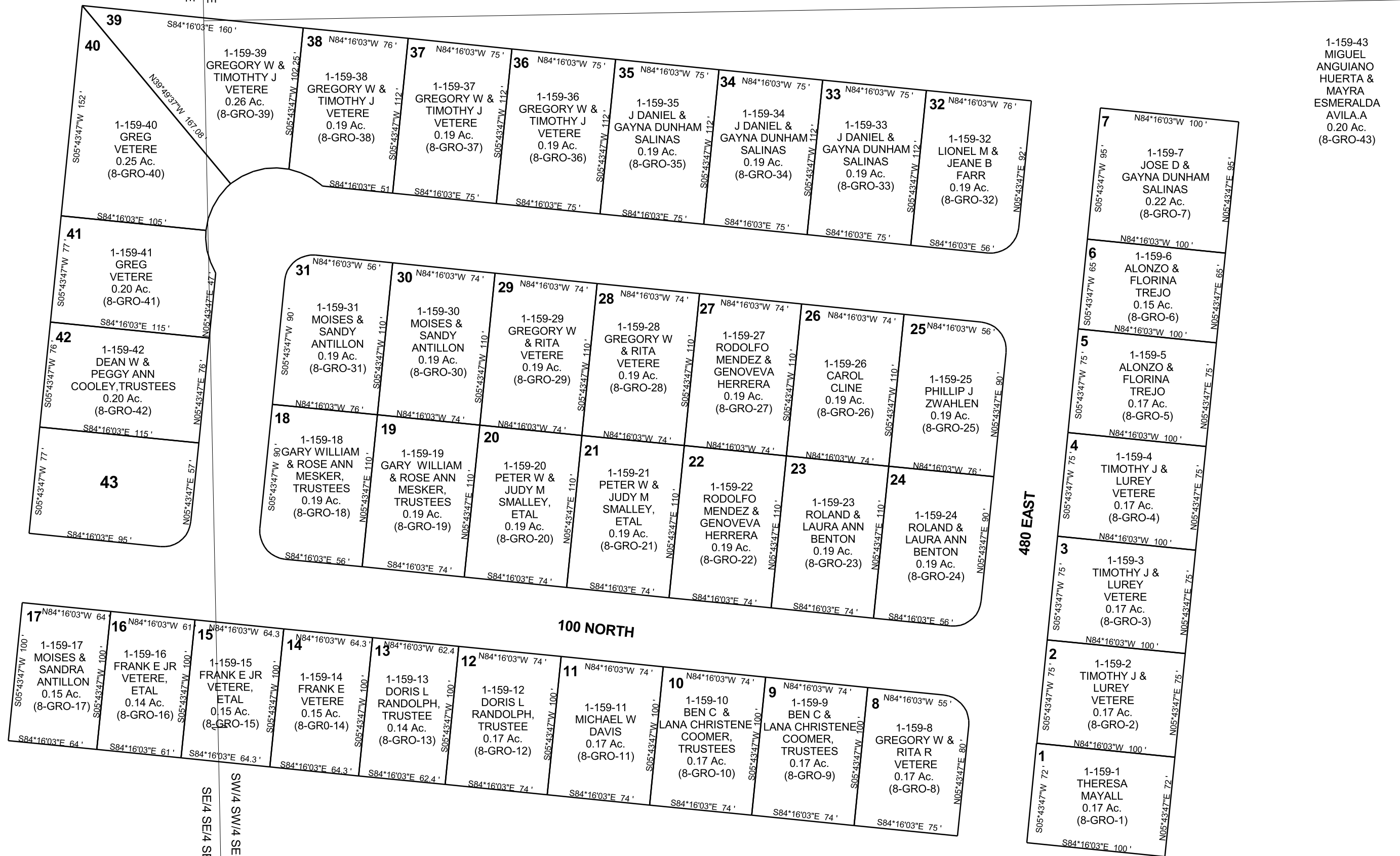


GREEN RIVER
ROSS SUBDIVISION, AMENDED
SECTION 10, T 21 S, R 16 E S.L.B. & M.

THIS PLAT IS MADE SOLELY FOR THE PURPOSE OF ASSISTING IN LOCATING THE LAND, AND THE RECORDER ASSUMES NO LIABILITY FOR VARIATIONS, IF ANY, WITH AN ACTUAL SURVEY.

NW1/4 SW1/4, SEC 10, TWP 21 S, R 16 E
NE1/4 SEC 9, TWP 21 S, R 16 E



1-159-43
MIGUEL
ANGUIANO
HUERTA &
MAYRA
ESMERALDA
AVILA A
0.20 Ac.
(8-GRO-43)