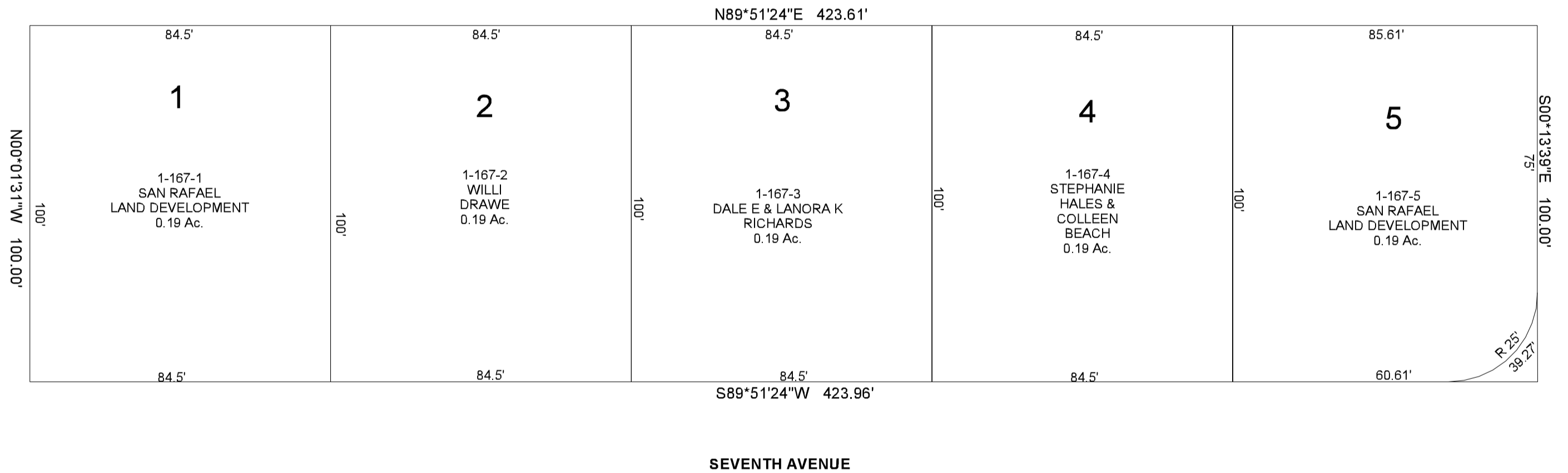


PARK CREST  
PLAT "A"  
NW/4 SW/4 SECTION 9, T 21 S, R 16 E S.L.B. & M.

THIS PLAT IS MADE SOLELY FOR THE PURPOSE  
OF ASSISTING IN LOCATING THE LAND, AND  
THE RECORDER ASSUMES NO LIABILITY FOR  
VARIATIONS, IF ANY, WITH AN ACTUAL SURVEY.



S00°13'39"E 100.00'  
75'

N00°01'31"W 100.00'  
100'

R 25'  
39.27'