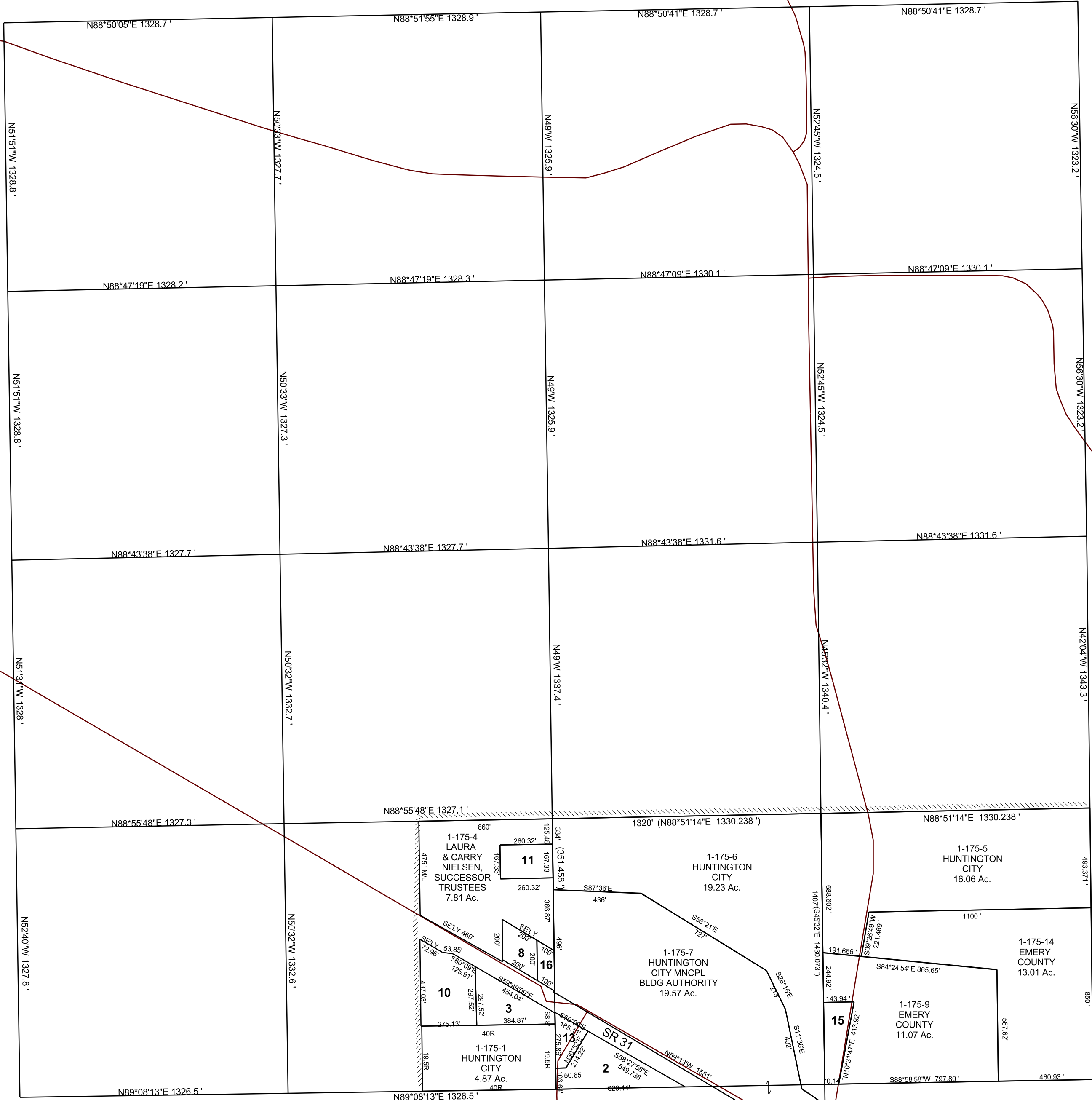


HUNTINGTON
SECTION 13, T 17 S, R 08 E S.L.B. & M.

THIS PLAT IS MADE SOLELY FOR THE PURPOSE
OF ASSISTING IN LOCATING THE LAND, AND
THE RECORDER ASSUMES NO LIABILITY FOR
VARIATIONS, IF ANY, WITH AN ACTUAL SURVEY.



- 1-175-2
EMERY COUNTY
SCHOOL DISTRICT
2.19 Ac.
- 1-175-3
HUNTINGTON
CITY MNCPL
BLDG AUTH
1.63 Ac.
- 1-175-8
NEIL &
JOYCE R
HOWARD
0.78 Ac.
- 1-175-10
MODERN MINE
SAFETY SUPPLY,
LLC
2.30 Ac.
- 1-175-11
CARRY &
BRIDGET
NIELSEN
1 Ac.
- 1-175-13
HUNTINGTON
CITY
0.62 Ac.
- 1-175-15
HUNTINGTON
CITY
1.03 Ac.
- 1-175-16
CHET BENNY
& PACEE JEAN
ALLRED
0.39 Ac.

1-175-4
LAURA
& CARRY
NIELSEN,
SUCCESSOR
TRUSTEES
7.81 Ac.

1-175-6
HUNTINGTON
CITY
19.23 Ac.

1-175-5
HUNTINGTON
CITY
16.06 Ac.

1-175-7
HUNTINGTON
CITY MNCPL
BLDG AUTHORITY
19.57 Ac.

1-175-14
EMERY COUNTY
13.01 Ac.

1-175-9
EMERY COUNTY
11.07 Ac.

1-175-1
HUNTINGTON
CITY
4.87 Ac.