

HUNTINGTON

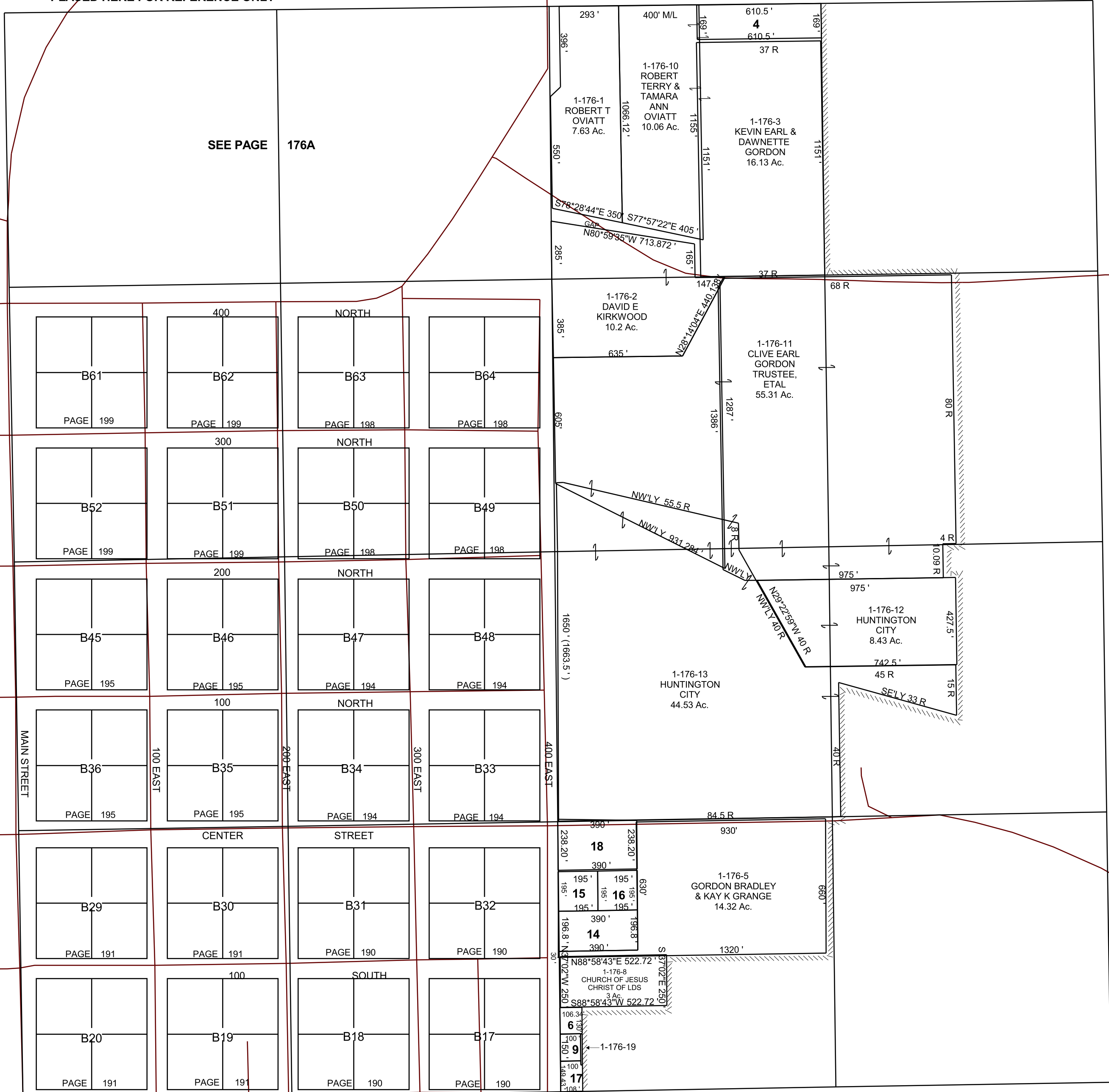
SECTION 19, T 17 S, R 09 E S.L.B. & M.

BOOK 1 PAGE 176
SCALE: 1" = 400'
OCTOBER 2, 2019

THIS PLAT IS MADE SOLELY FOR THE PURPOSE
OF ASSISTING IN LOCATING THE LAND, AND
THE RECORDER ASSUMES NO LIABILITY FOR
VARIATIONS, IF ANY, WITH AN ACTUAL SURVEY.

THE BLOCKS ON THIS PAGE HAVE BEEN
PLACED HERE FOR REFERENCE ONLY

SEE PAGE 176A



- 1-176-4
KEVIN EARL &
DAWNETTE
GORDON
2.37 Ac.
- 1-176-6
BRIANT &
TIFFANY
COWLEY
0.32 Ac.
- 1-176-9
STANLEY P &
CATHERINE J
COWLEY
0.31 Ac.
- 1-176-14
LARRY M &
LINDA
DALEY
1.76 Ac.
- 1-176-15
RODNEY
EWELL
0.87 Ac.
- 1-176-16
RODNEY
EWELL
0.87 Ac.
- 1-176-17
TREVOR
& BROKKE
COWLEY
0.37 Ac.
- 1-176-18
MARTHA
BRYANT
2.18 Ac.
- 1-176-19
STANLEY P &
CATHERINE
COWLEY
0.03 Ac.