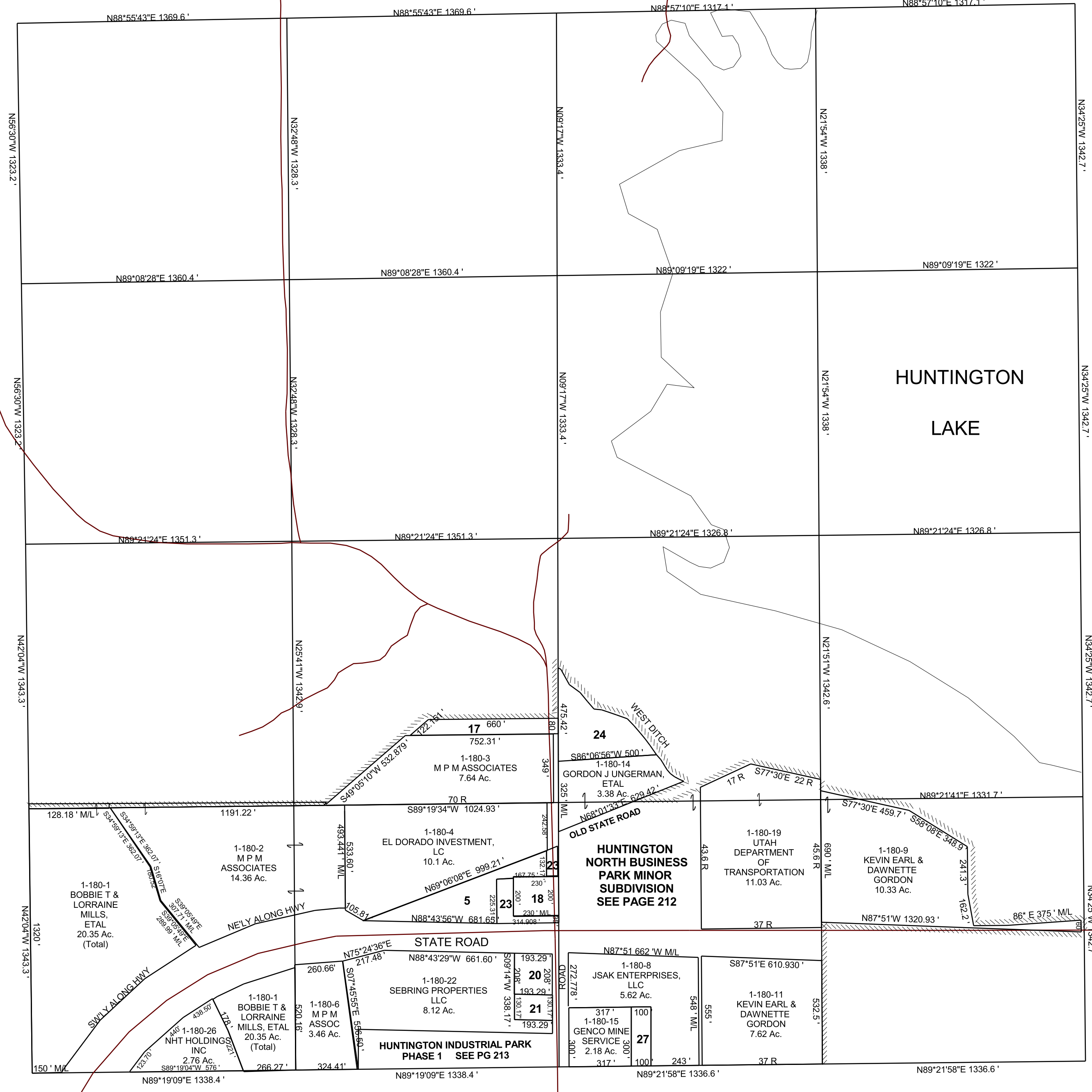


HUNTINGTON

SECTION 18, T 17 S, R 09 E S.L.B. & M.

BOOK 1 PAGE 180
SCALE: 1" = 400'
SEPTEMBER 28, 2020

THIS PLAT IS MADE SOLELY FOR THE PURPOSE
OF ASSISTING IN LOCATING THE LAND, AND
THE RECORDER ASSUMES NO LIABILITY FOR
VARIATIONS, IF ANY, WITH AN ACTUAL SURVEY.



- 1-180-5
EL DORADO
INVESTMENT, LC
2.66 Ac.
- 1-180-17
BOBBIE T &
LORRAINE
MILLS, ETAL
1.30 AC.
- 1-180-18
BOBBIE T &
LORRAINE
MILLS, ETAL
1.06 Ac.
- 1-180-20
RURAL UTAH
CHILD
DEVELOPMENT
0.92 AC.
- 1-180-21
GENCO MINE
SERVICE
0.42 AC
- 1-180-23
M P M
ASSOCIATES
0.82 Ac.
- 1-180-24
DON EDWIN
JOHNSON,
TRUSTEE
2.72 Ac.
- 1-180-27
SEBRING PROPERTIES,
LLC
0.69 Ac.