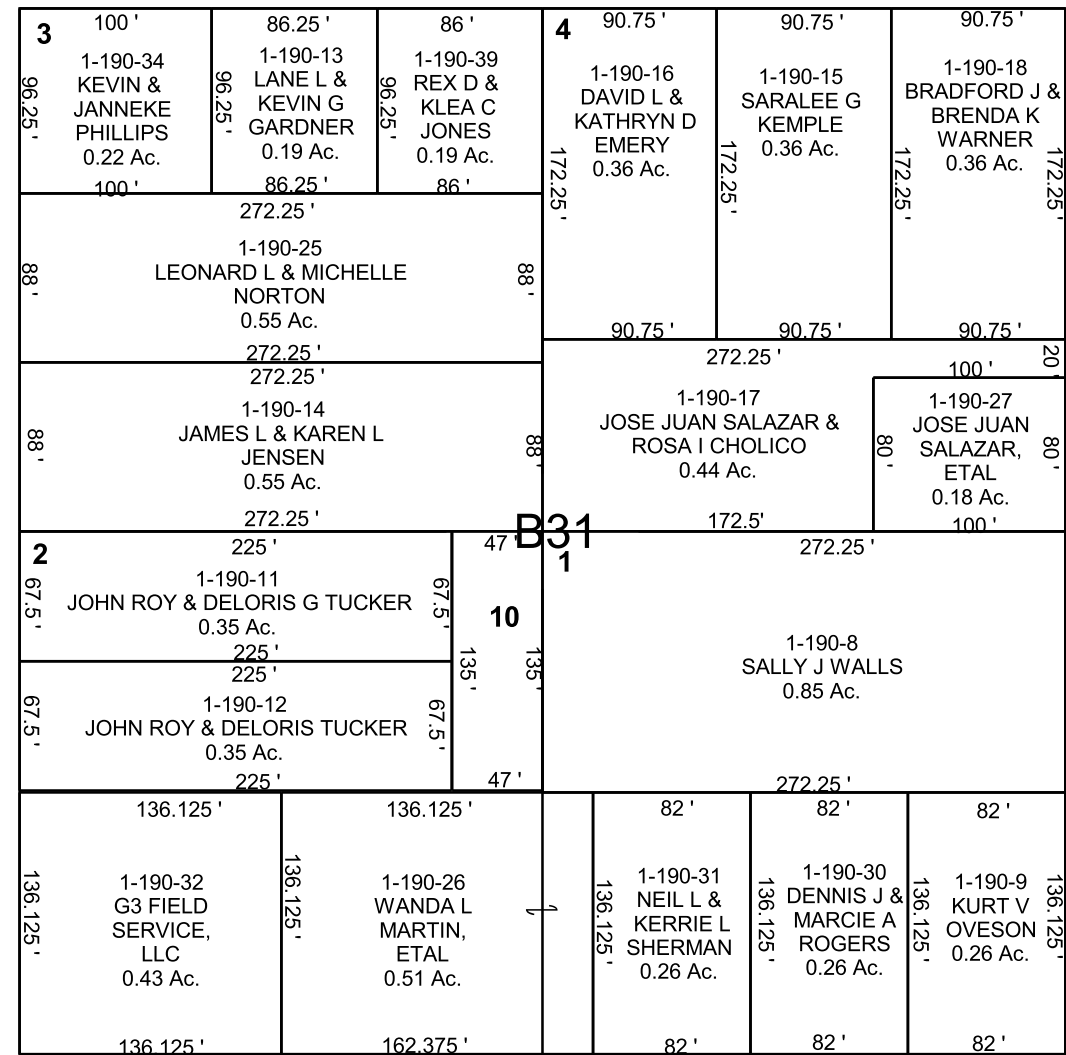


HUNTINGTON

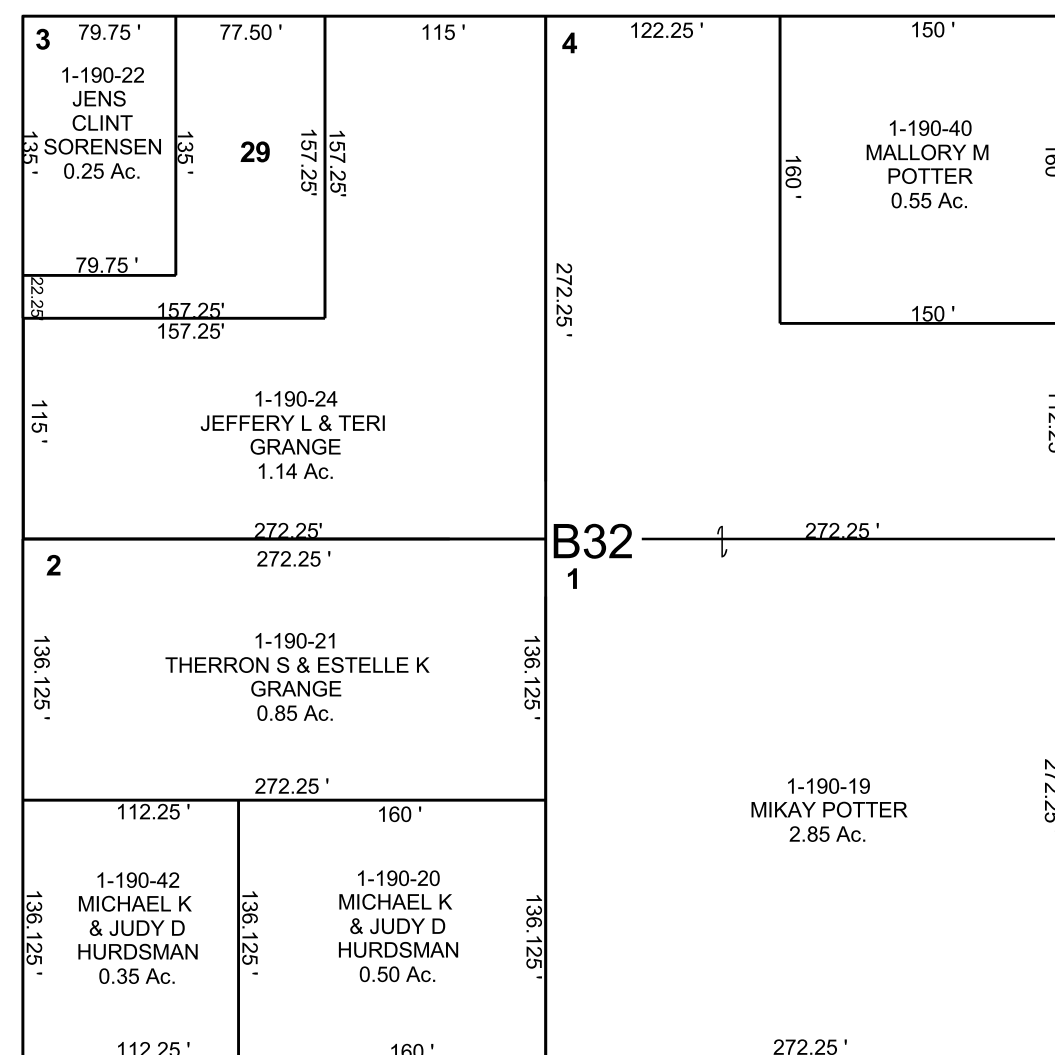
SE/4 SW/4 SECTION 19, T 17 S, R 09 E S.L.B. & M.

THIS PLAT IS MADE SOLELY FOR THE PURPOSE OF ASSISTING IN LOCATING THE LAND, AND THE RECORDER ASSUMES NO LIABILITY FOR VARIATIONS, IF ANY, WITH AN ACTUAL SURVEY.



99'

300



1-190-10
ROY &
DELORIS
TUCKER
0.15 Ac.

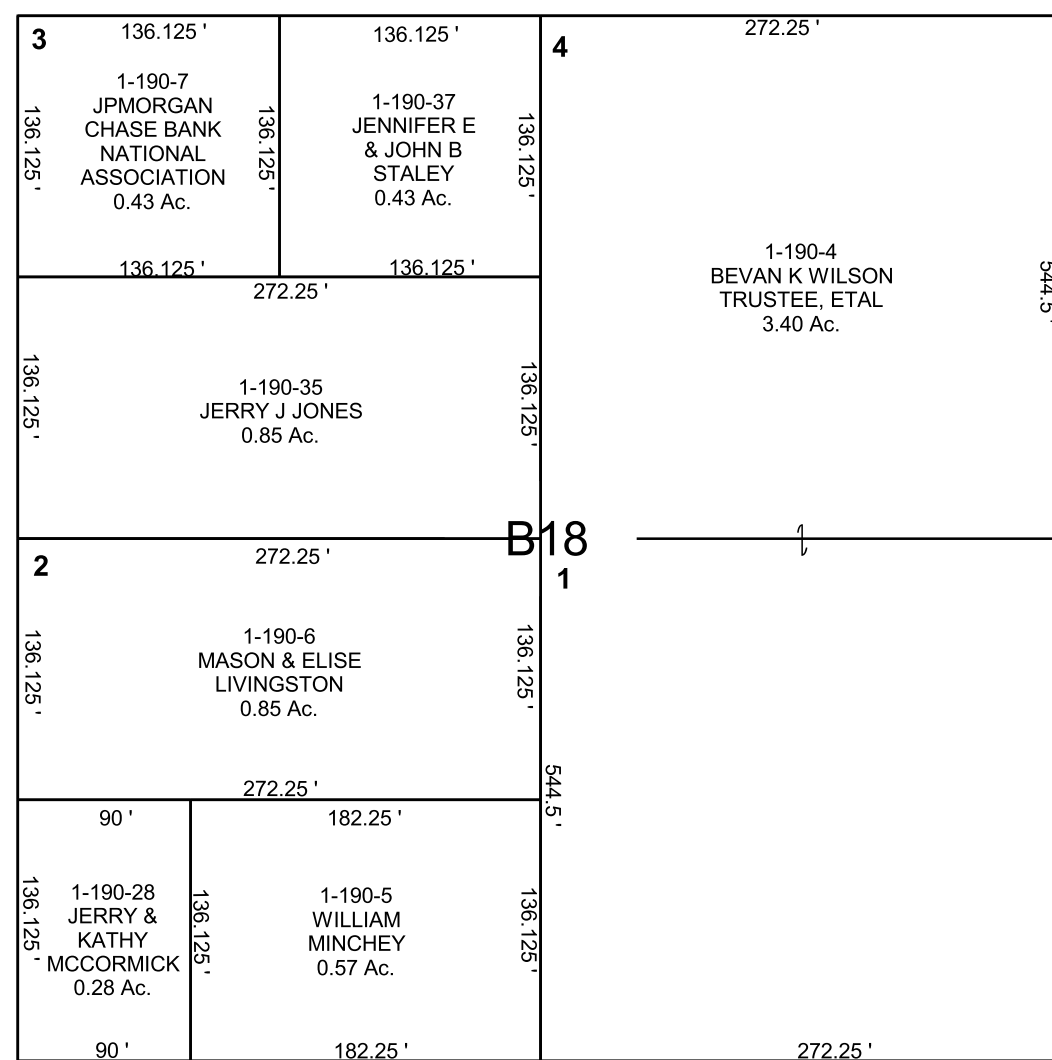
1-190-29
JAMES O &
PAMELA G
ANDERSON,
0.32 Ac.

99'

100

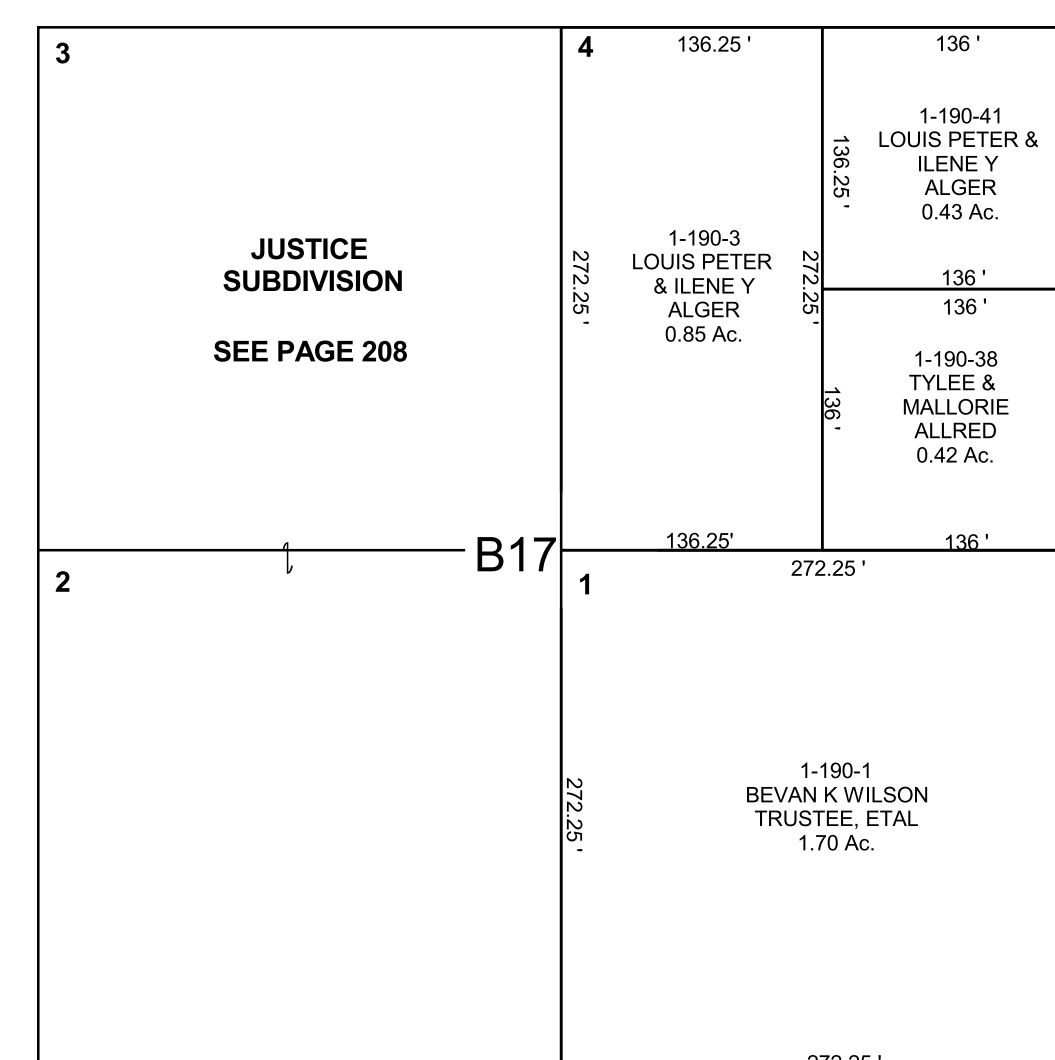
SOUTH

99'



EAST

99'



S. 1/4 COR.
SEC. 19