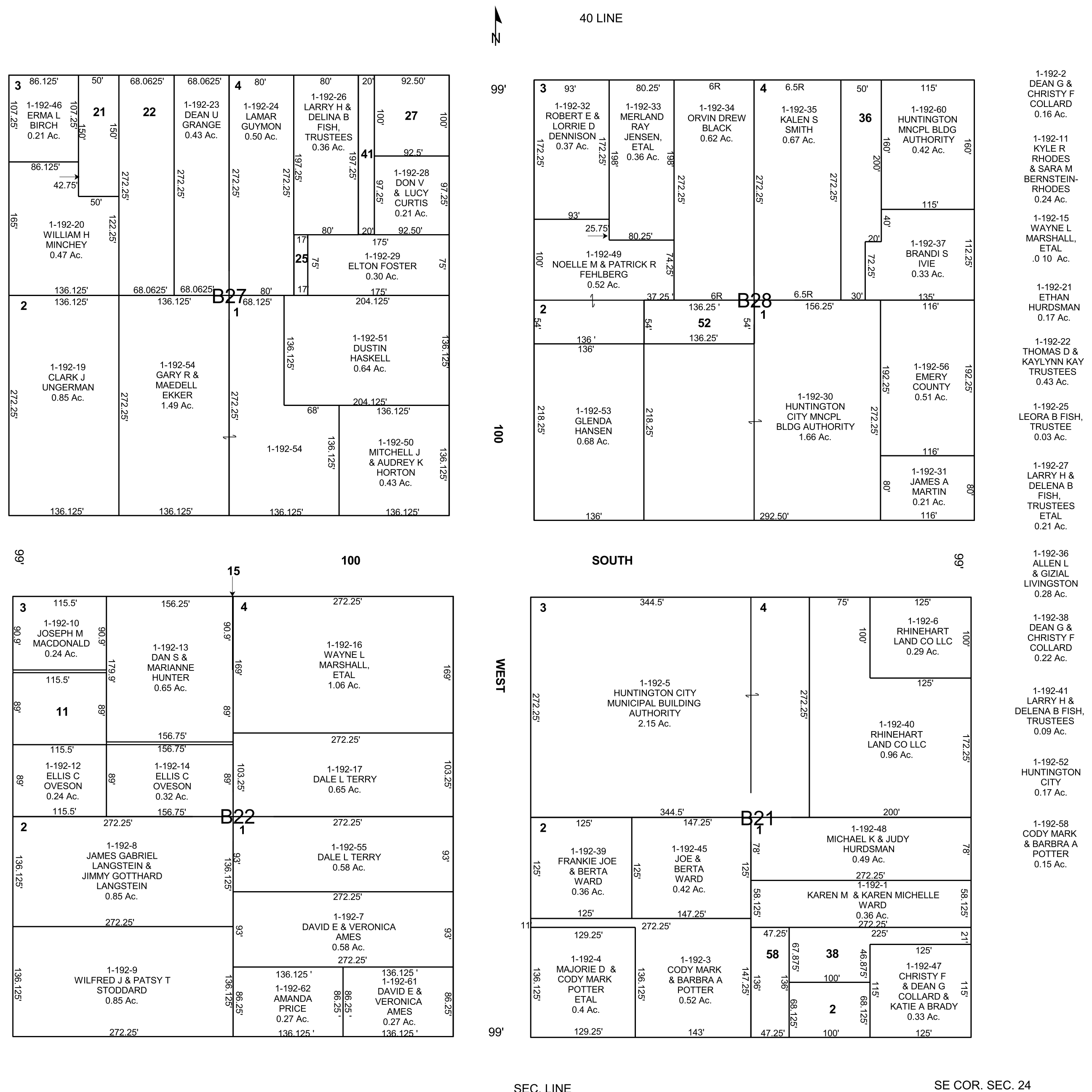


HUNTINGTON

SE/4 SE/4 SECTION 24, T 17 S, R 08 E S.L.B. & M.

THIS PLAT IS MADE SOLELY FOR THE PURPOSE OF ASSISTING IN LOCATING THE LAND, AND THE RECORDER ASSUMES NO LIABILITY FOR VARIATIONS, IF ANY, WITH AN ACTUAL SURVEY.



- 1-192-2 DEAN G & CHRISTY F COLLARD 0.16 Ac.
- 1-192-11 KYLE R RHODES & SARA M BERNSTEIN-RHODES 0.24 Ac.
- 1-192-15 WAYNE L MARSHALL, ETAL .010 Ac.
- 1-192-21 ETHAN HURDSMAN 0.17 Ac.
- 1-192-22 THOMAS D & KAYLYNN KAY TRUSTEES 0.43 Ac.
- 1-192-25 LEORA B FISH, TRUSTEE 0.03 Ac.
- 1-192-27 LARRY H & DELENA B FISH, TRUSTEES ETAL 0.21 Ac.
- 1-192-36 ALLEN L & GIZIAL LIVINGSTON 0.28 Ac.
- 1-192-38 DEAN G & CHRISTY F COLLARD 0.22 Ac.
- 1-192-41 LARRY H & DELENA B FISH, TRUSTEES 0.09 Ac.
- 1-192-52 HUNTINGTON CITY 0.17 Ac.
- 1-192-58 CODY MARK & BARBRA A POTTER 0.15 Ac.