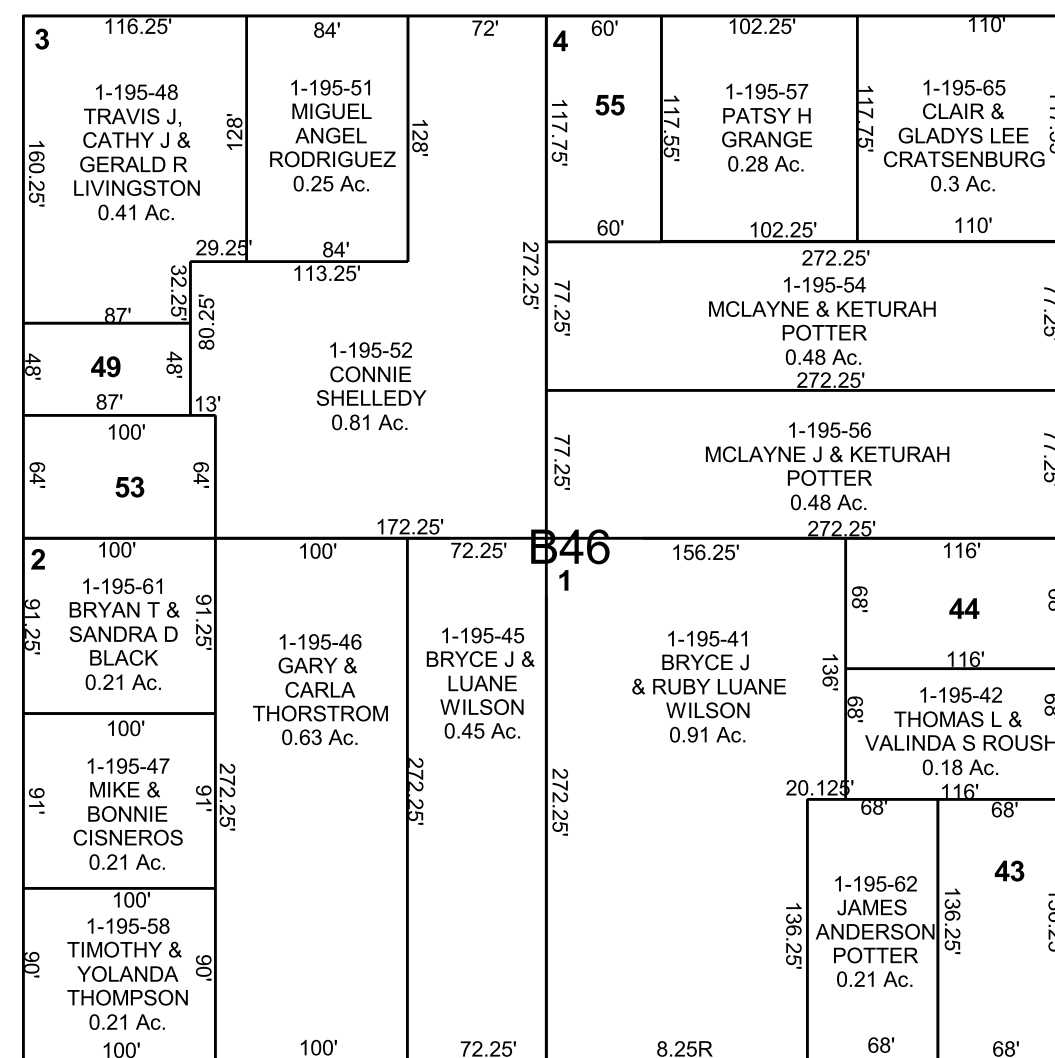
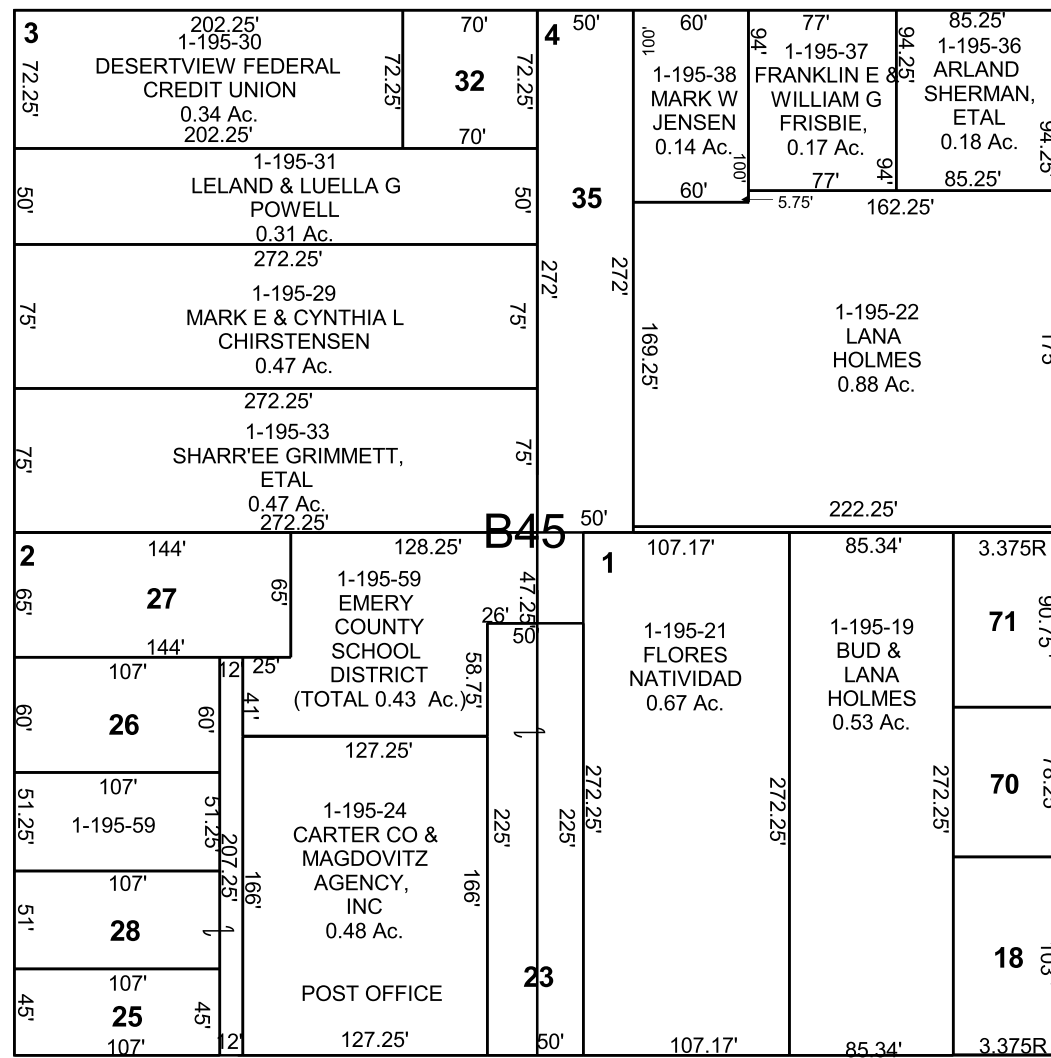


HUNTINGTON

NW/4 SW/4 SECTION 19, T 17 S, R 09 E S.L.B. & M.

BOOK 1 PAGE 195
SCALE: 1" = 100'
APRIL 24, 2019

THIS PLAT IS MADE SOLELY FOR THE PURPOSE
OF ASSISTING IN LOCATING THE LAND, AND
THE RECORDER ASSUMES NO LIABILITY FOR
VARIATIONS, IF ANY, WITH AN ACTUAL SURVEY.



- 1-195-4 KELLY BOREN 0.19 Ac.
- 1-195-8 LANNY D & DEBORAH L RICHARDS 0.23 Ac.
- 1-195-18 DANIEL BLACK & SHANNON SEEGMILLER 0.13 Ac.
- 1-195-23 BUDDIE D RICKS 0.26 Ac.
- 1-195-25 HUGH & SHERRIE GRANGE 0.11 Ac.
- 1-195-26 STEVEN LAYNE & LORI ANN PRINCE 0.15 Ac.
- 1-195-27 GLENDA RAE HANSEN, ETAL 0.21 Ac.
- 1-195-28 EMERY COUNTY SCHOOL DISTRICT 0.18 Ac.
- 1-195-32 WALTER KING 0.12 Ac.
- 1-195-35 JAMES ANDREW & VONDA FAY FRANKLIN 0.31 Ac.
- 1-195-40 JULIA SHERMAN 0.02 Ac.
- 1-195-43 ROBERT G & JEANNE M ANDERSON 0.21 Ac.
- 1-195-44 MARGARET ELAINE POTTER 0.18 Ac.
- 1-195-49 DAMION & TRALEE GORDON 0.10 Ac.
- 1-195-53 BRYAN T & SANDRA D BLACK 0.15 Ac.
- 1-195-55 PATSY HERRON GRANGE 0.16 Ac.
- 1-195-69 LANNY D & DEBORAH L RICHARDS 77.34 SQ. FT
- 1-195-70 DANIEL BLACK & SHANNON SEEGMILLER 0.10 Ac.
- 1-195-71 DANIEL BLACK & SHANNON SEEGMILLER 0.12 Ac.

