

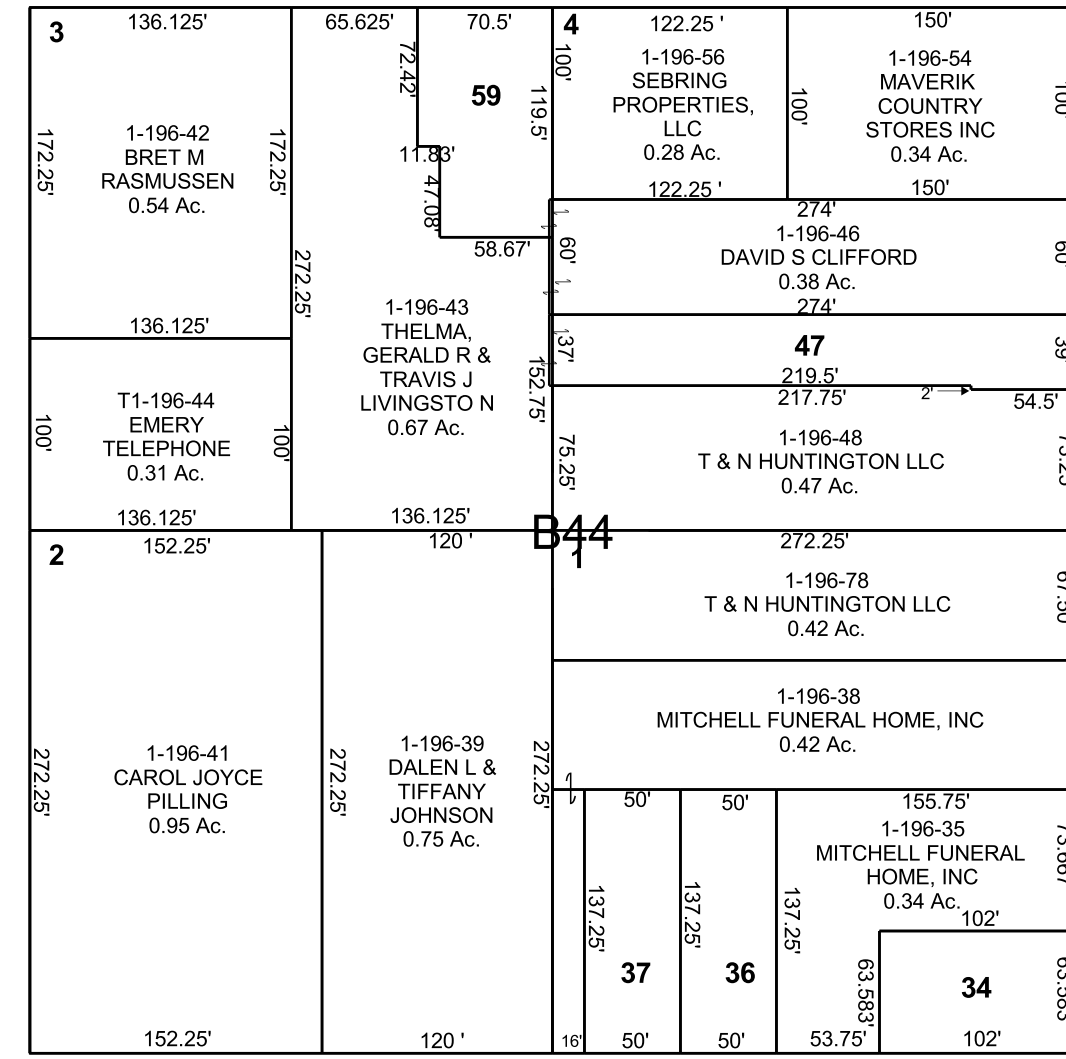
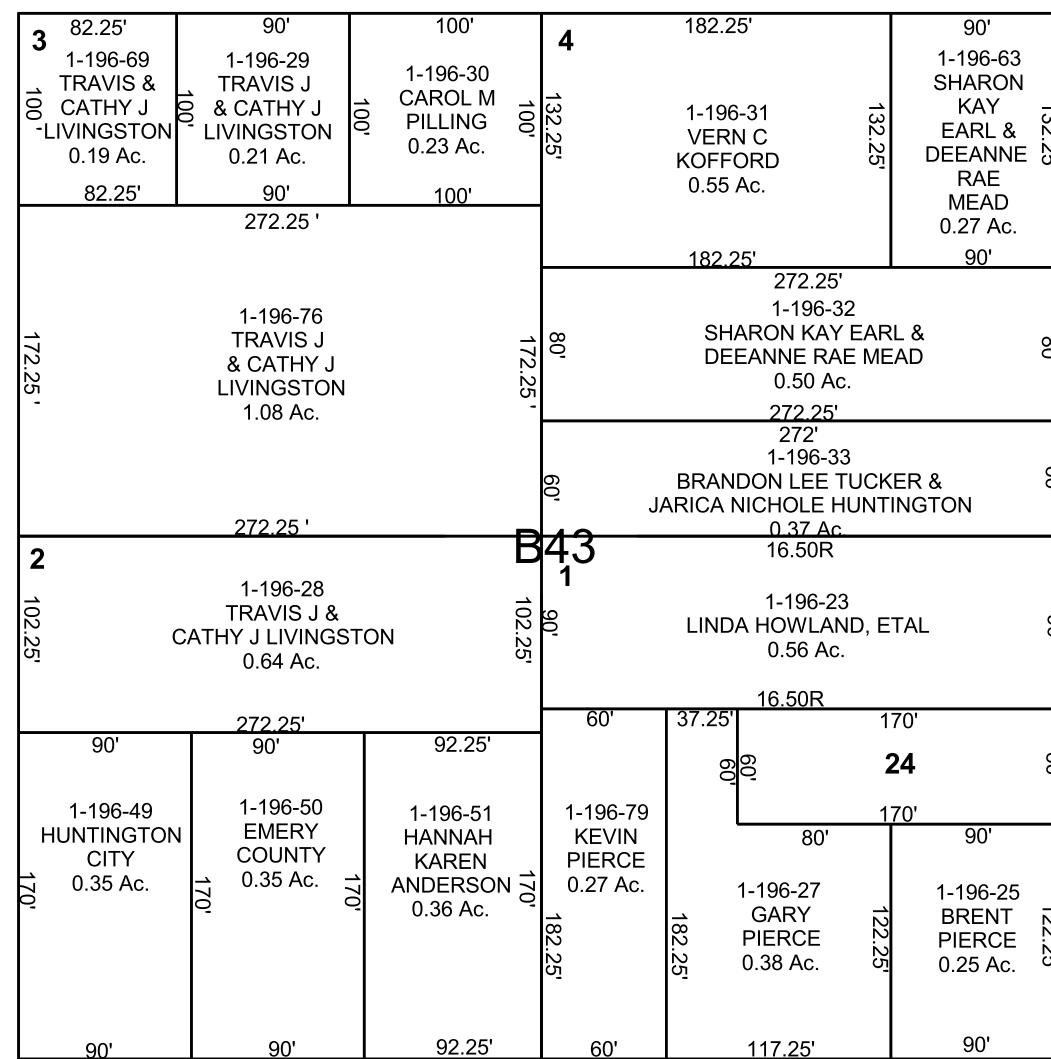
HUNTINGTON

NE/4 SE/4 SECTION 24, T 17 S, R 08 E S.L.B. & M.

BOOK 1 PAGE 196  
SCALE: 1" = 100'  
AUGUST 5, 2022

THIS PLAT IS MADE SOLELY FOR THE PURPOSE OF ASSISTING IN LOCATING THE LAND, AND THE RECORDER ASSUMES NO LIABILITY FOR VARIATIONS, IF ANY, WITH AN ACTUAL SURVEY.

EAST 1/4 COR.  
SEC. 24



- 1-196-4 DEAN U & MAR U GRANGE, 0.16 Ac.
- 1-196-6 KALLEEN YOUNG, 0.08 Ac.
- 1-196-7 DEAN U & MAR U GRANGE, 0.05 Ac.
- 1-196-8 SCOTT P WITTE & LISA A ANDERSON, 0.18 Ac.
- 1-196-9 MARK T JUSTICE, 0.06 Ac.
- 1-196-10 LAMAR E & GAYLA J GUYMON, ETAL, 0.05 Ac.
- 1-196-22 DAUGHTERS OF UTAH PIONEERS, 0.09 Ac.
- 1-196-24 DEVIN LEE & ASHTON WILSON, 0.23 Ac.
- 1-196-34 KATHY NIELSON TRUSTEE, ETAL, 0.15 Ac.
- 1-196-36 LANNIE K & KELLY P BURNSIDE, 0.16 Ac.
- 1-196-37 R BRUCE & LOYETTE MYERHOFF, 0.16 Ac.
- 1-196-47 JIMMY AVILA, 0.24 Ac.
- 1-196-52 KALLEEN YOUNG, 0.04 Ac.
- 1-196-53 KALLEEN YOUNG, 0.05 Ac.
- 1-196-59 THELMA, GERALD R & TRAVIS LIVINGSTON, 0.18 Ac.
- 1-196-67 ALYCE GEARY CHILDS, 0.15 Ac.
- 1-196-73 JOSEPH EDWARD & EDNA SUE JOHNSON, 0.12 Ac.
- 1-196-77 EDWARD JOSEPH & EDNA SUE JOHNSON, 0.19 Ac.

