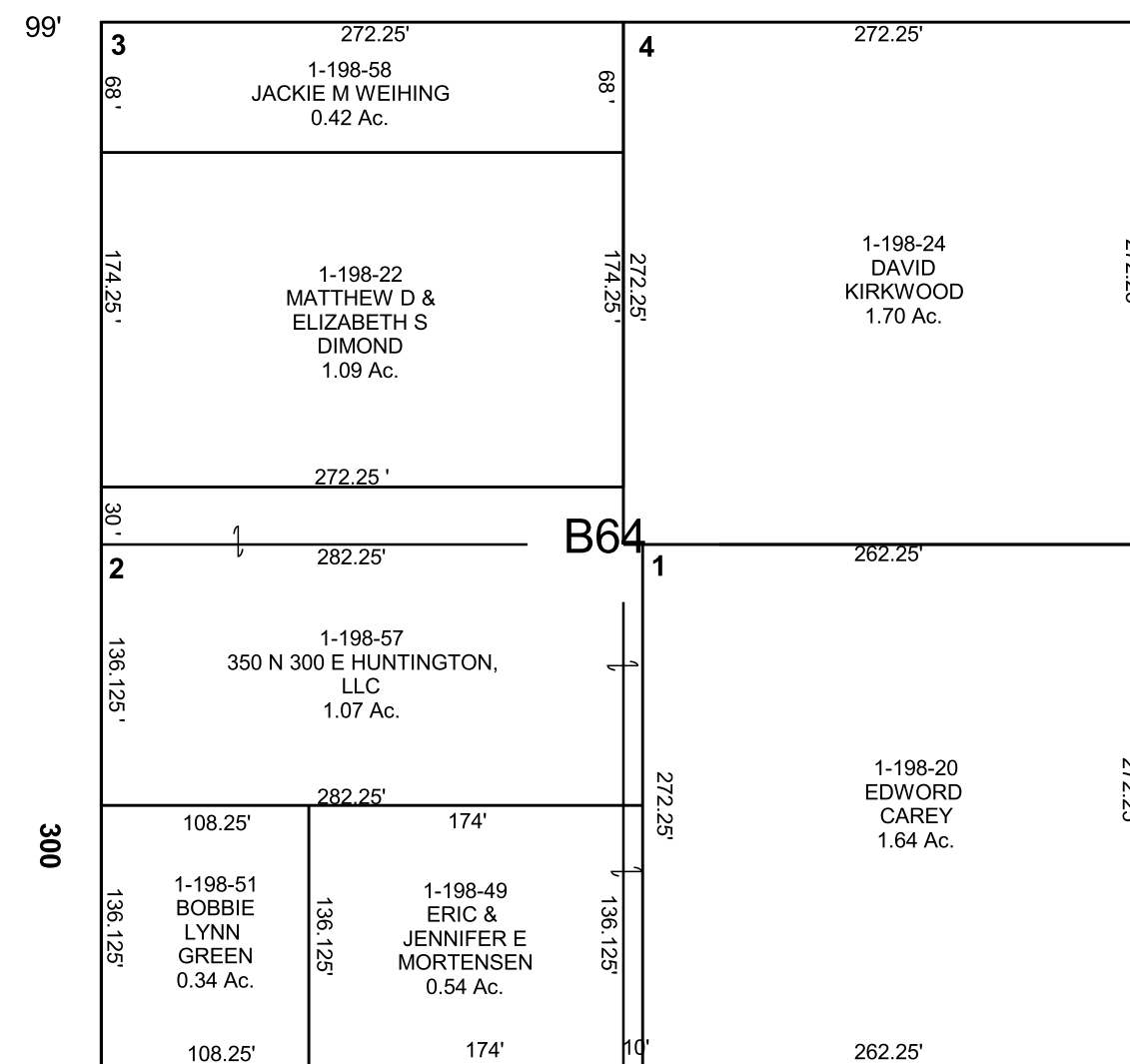
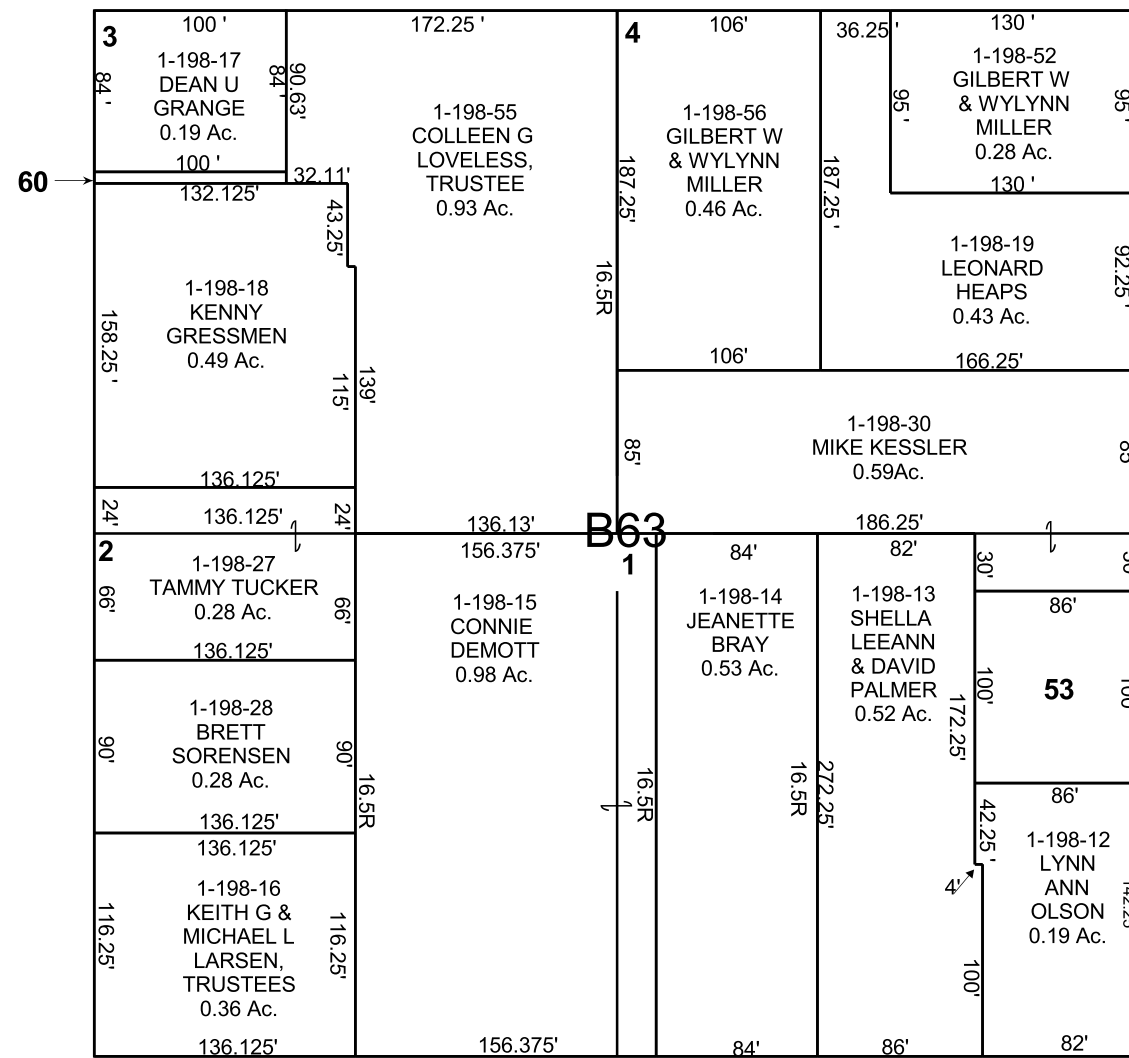


HUNTINGTON

SE/4 NW/4 SECTION 19, T 17 S, R 09 E S.L.B. & M.

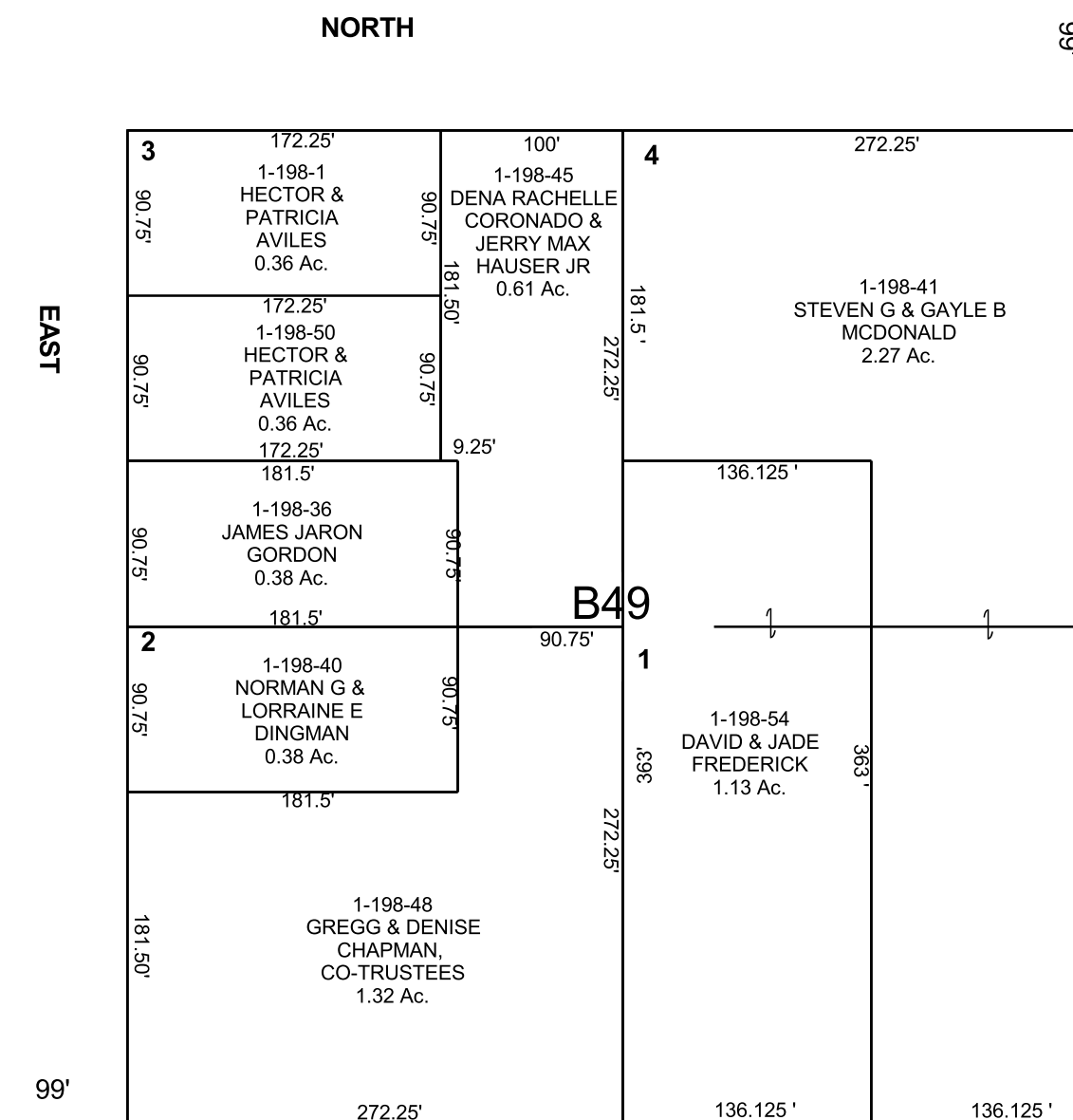
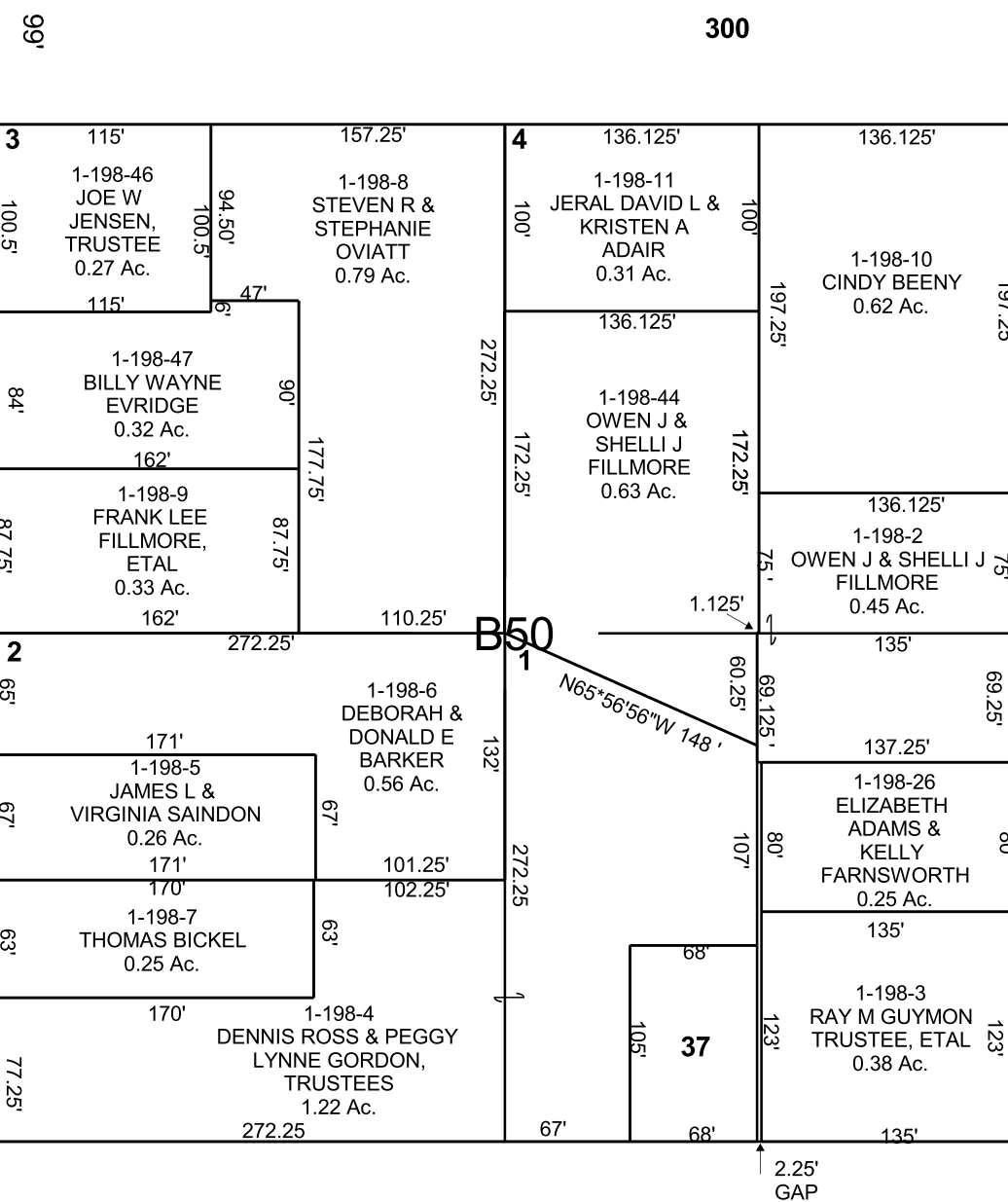
THIS PLAT IS MADE SOLELY FOR THE PURPOSE OF ASSISTING IN LOCATING THE LAND, AND THE RECORDER ASSUMES NO LIABILITY FOR VARIATIONS, IF ANY, WITH AN ACTUAL SURVEY.



1-198-53  
DAVID PALMER  
0.20 Ac.

1-198-60  
DEAN U  
GRANGE  
0.01 Ac.

1-198-37  
LYNN R &  
NEIL LYNN SHERMAN &  
CINDY LOU RIDDLE  
0.16 Ac.



CENTER  
OF  
SEC. 19