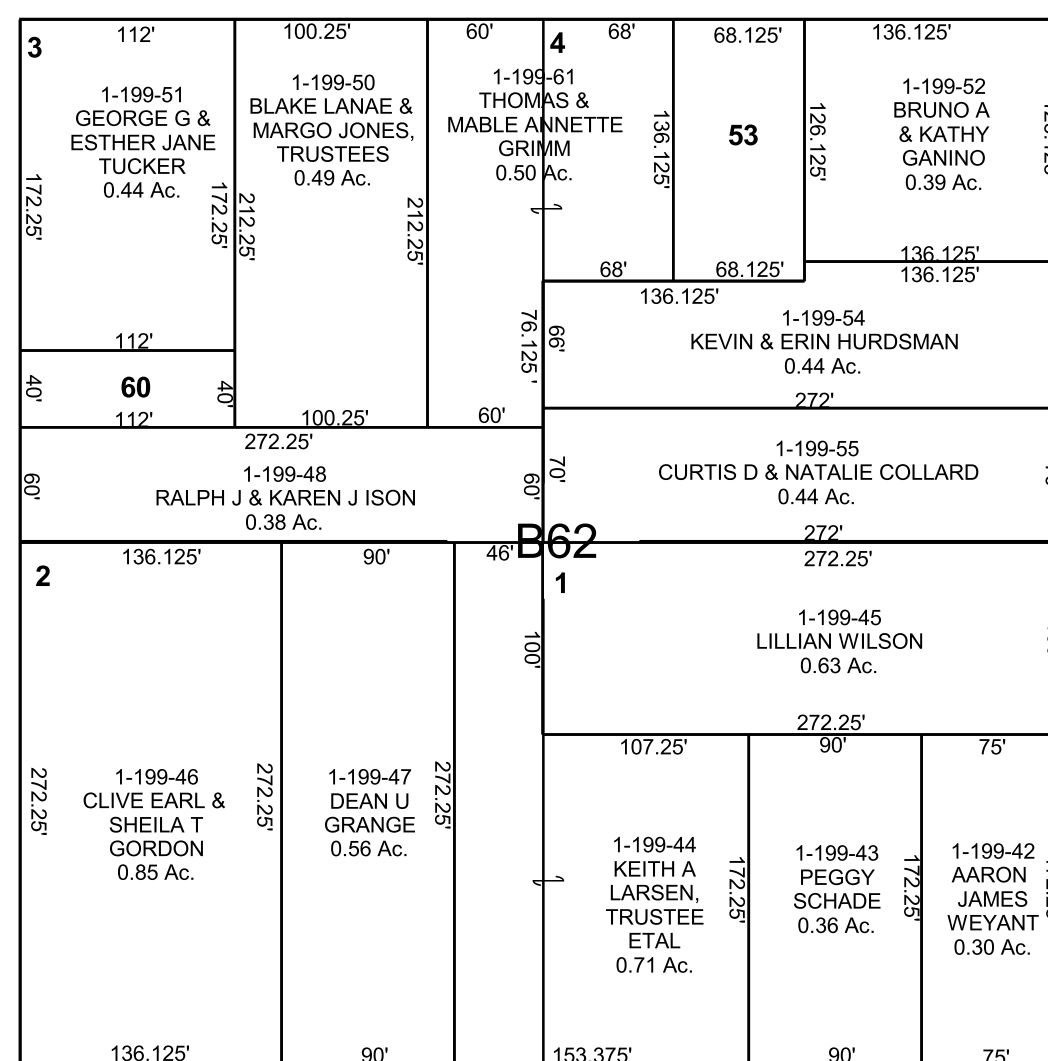
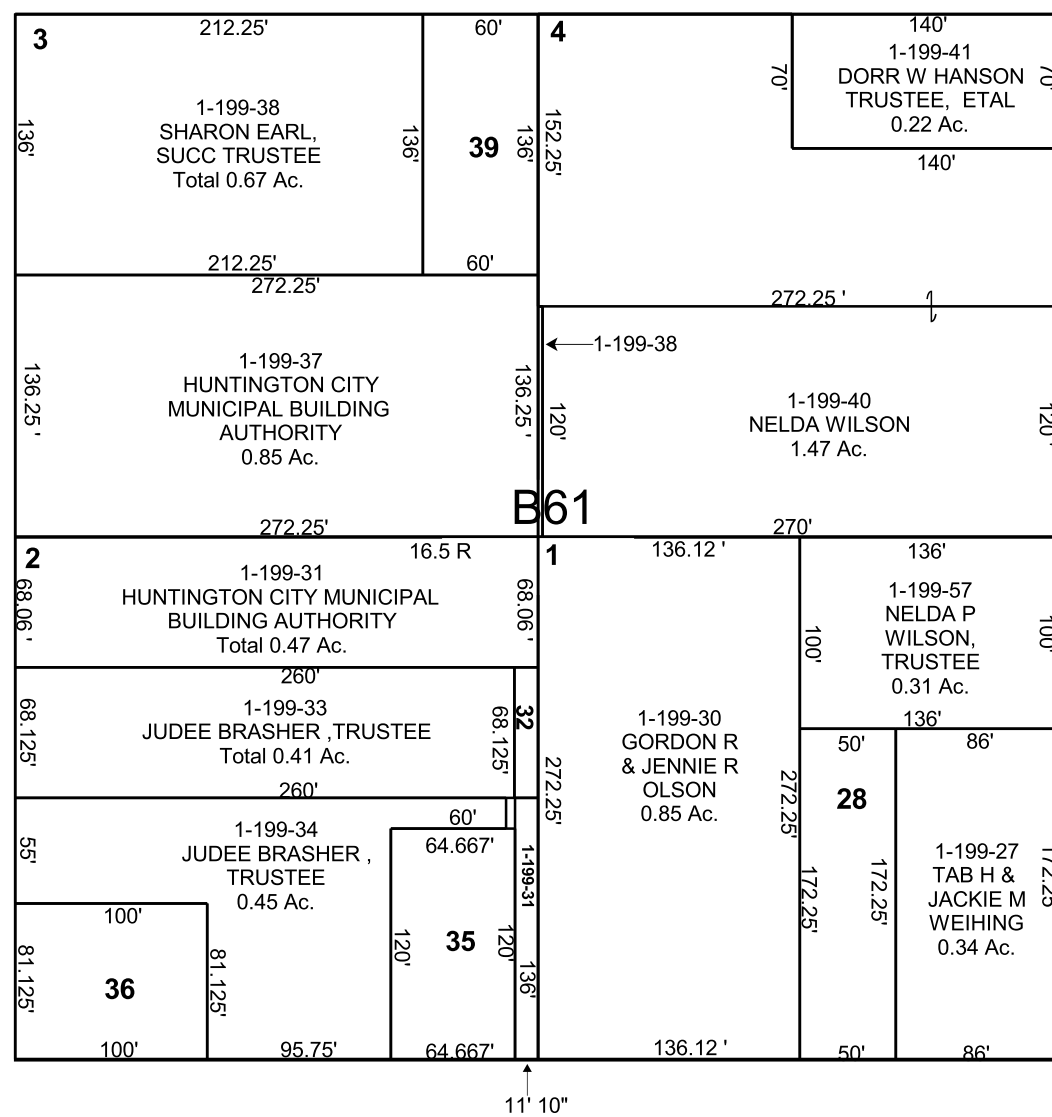


HUNTINGTON

SW/4 NW/4 SECTION 19, T 17 S, R 09 E S.L.B. & M.

THIS PLAT IS MADE SOLELY FOR THE PURPOSE OF ASSISTING IN LOCATING THE LAND, AND THE RECORDER ASSUMES NO LIABILITY FOR VARIATIONS, IF ANY, WITH AN ACTUAL SURVEY.



1-199-8
MAVOREEN R
ANDERSON,
TRUSTEE
ETAL
0.37 Ac.

1-199-22
MAYNARD W &
DEBARAHA L
MURRAY
0.17 Ac.

1-199-28
TOMAS
HERNANDEZ
0.20 Ac.

1-199-32
EMERY
COUNTY
0.02 Ac.

1-199-35
MAUREEN L
MCARTHUR
0.18 Ac.

1-199-36
JUDEE BRASHER,
TRUSTEE
0.19 Ac.

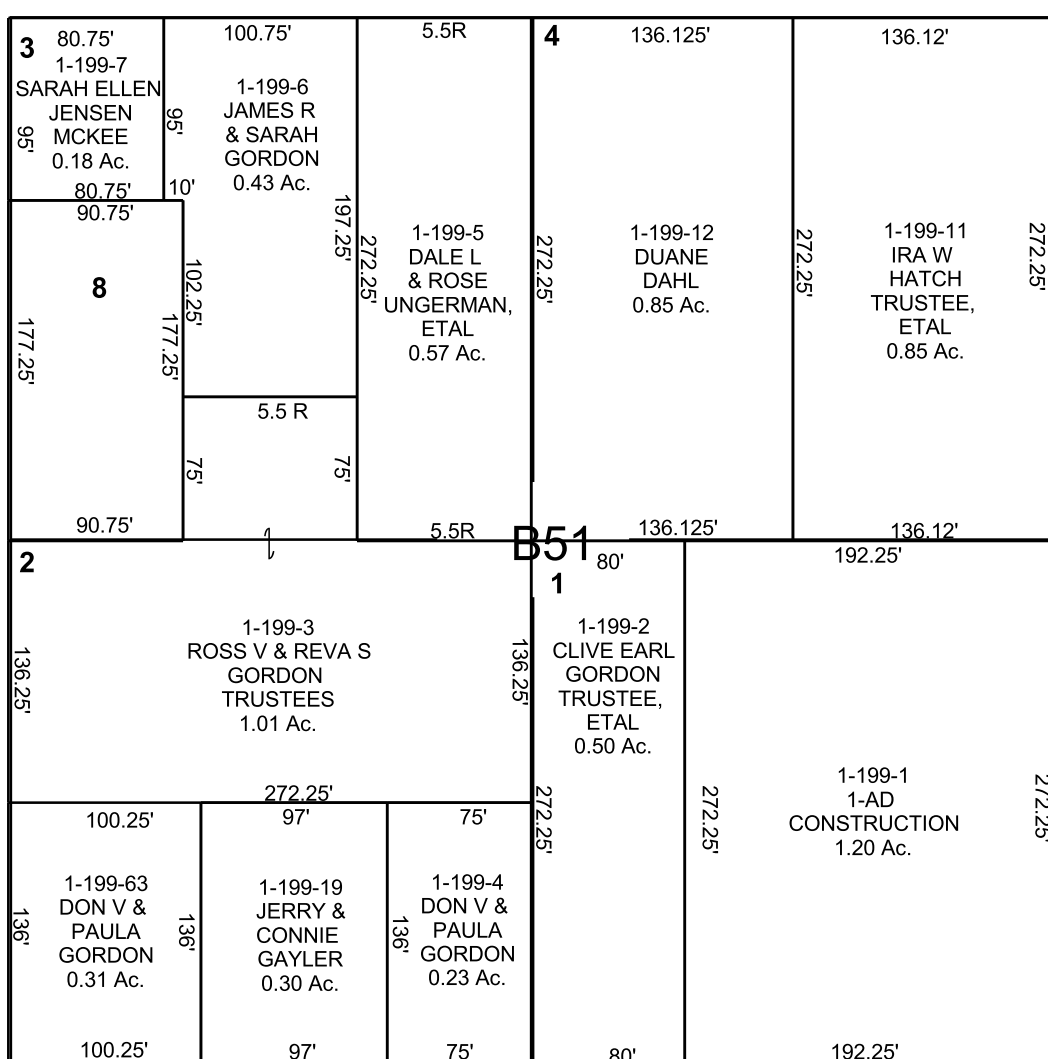
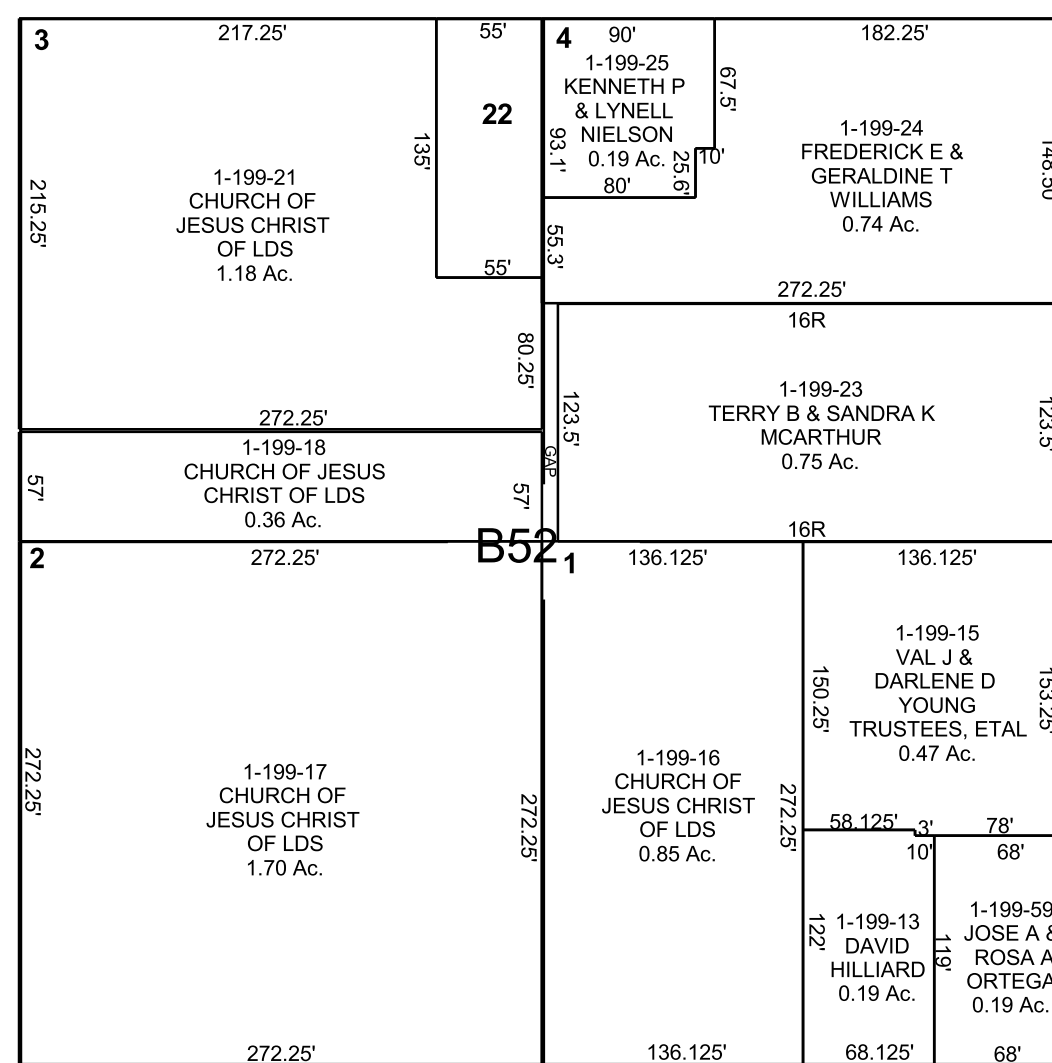
1-199-39
SCOTT W
GORDON
0.19 Ac.

1-199-53
PAULA JEAN
MANCHESTER,
PER REP, ETAL
0.21 Ac.

1-199-56
KEVIN & ERIN
HURDSMAN
0.03 Ac.

1-199-60
RALPH J &
KAREN J ISON
0.10 Ac.

1-199-61
THOMAS &
ANNETTE
GRIMM
0.21 Ac.



W1/4 COR.