

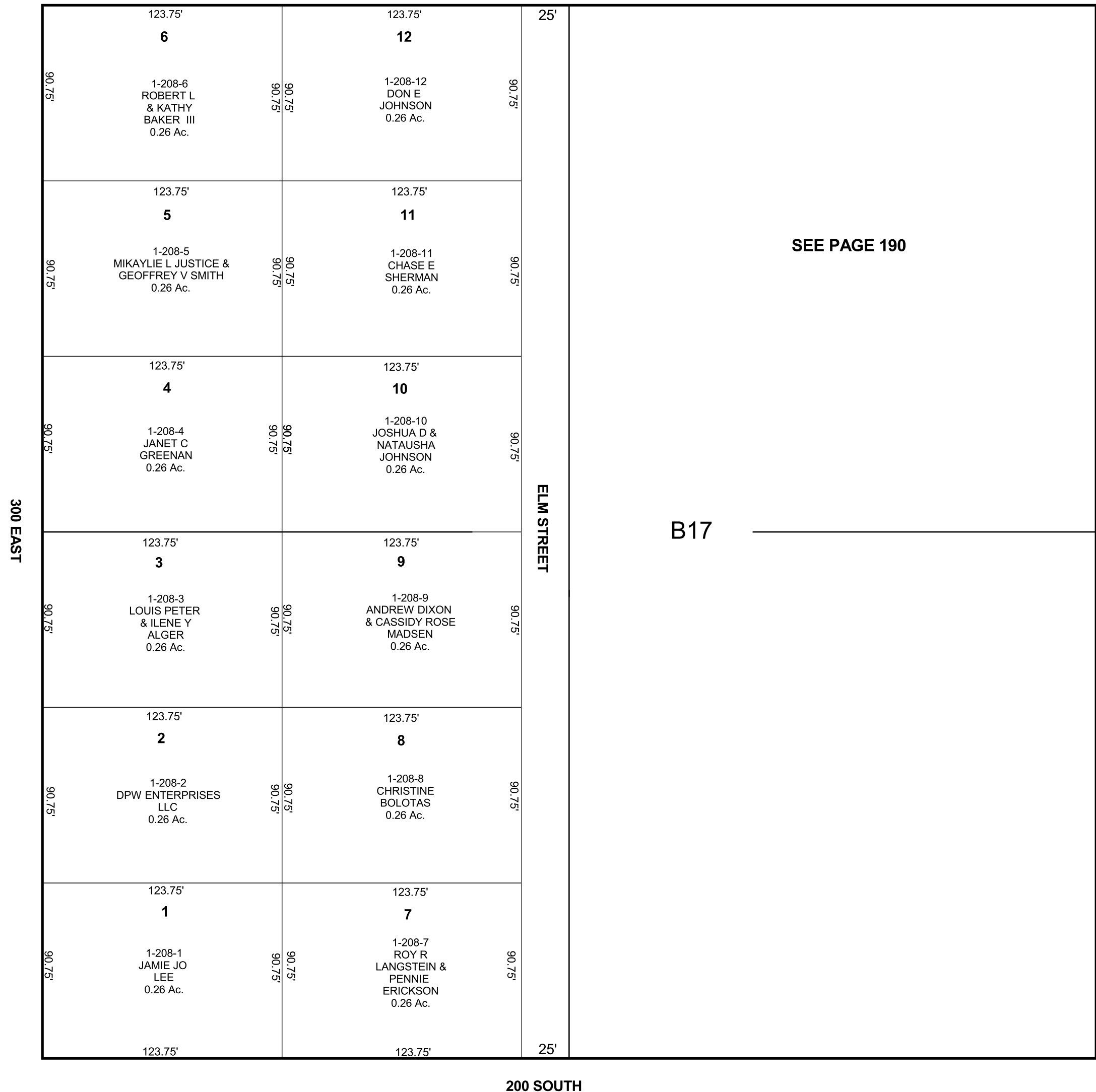
JUSTICE SUBDIVISION
HUNTINGTON
SE/4 SW/4 SECTION 19, T 17 S, R 09 E S.L.B. & M.

BOOK 1 PAGE 208
SCALE: 1" = 50'
DECEMBER 19, 2018

THIS PLAT IS MADE SOLELY FOR THE PURPOSE
OF ASSISTING IN LOCATING THE LAND, AND
THE RECORDER ASSUMES NO LIABILITY FOR
VARIATIONS, IF ANY, WITH AN ACTUAL SURVEY.



100 SOUTH



SEE PAGE 190

B17

ELM STREET

300 EAST