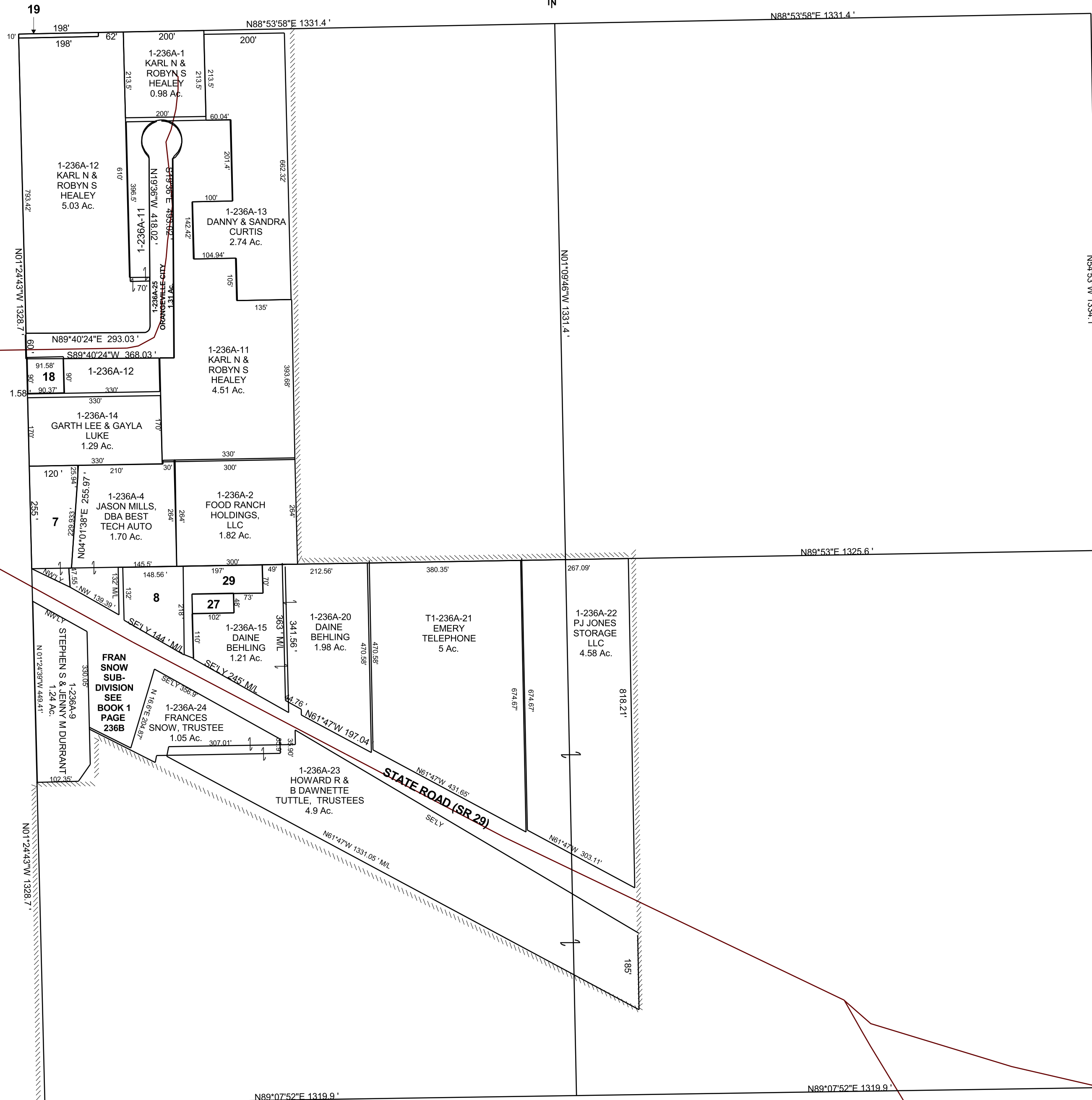


ORANGEVILLE

NE/4 SECTION 29, T 18 S, R 08 E S.L.B. & M.

BOOK 1 PAGE 236A  
SCALE: 1" = 200'  
AUGUST 5, 2022

THIS PLAT IS MADE SOLELY FOR THE PURPOSE  
OF ASSISTING IN LOCATING THE LAND, AND  
THE RECORDER ASSUMES NO LIABILITY FOR  
VARIATIONS, IF ANY, WITH AN ACTUAL SURVEY.



- 1-236A-7  
RONALD G &  
SUE K  
JONES  
0.70 Ac.
- 1-236A-8  
KIM WALLACE &  
ROBYN  
CURTIS  
0.60 Ac.
- 1-236A-18  
WILLIAM H &  
MARSHA D  
SHERMAN  
0.19 Ac.
- 1-236A-19  
KARL N  
HEALY  
0.05 Ac.
- 1-236A-27  
DAINE  
BEHLING  
0.12 Ac.
- 1-236A-29  
FOOD RANCH  
HOLDINGS, LLC  
0.39 Ac.

1-236A  
29-18S-08E