

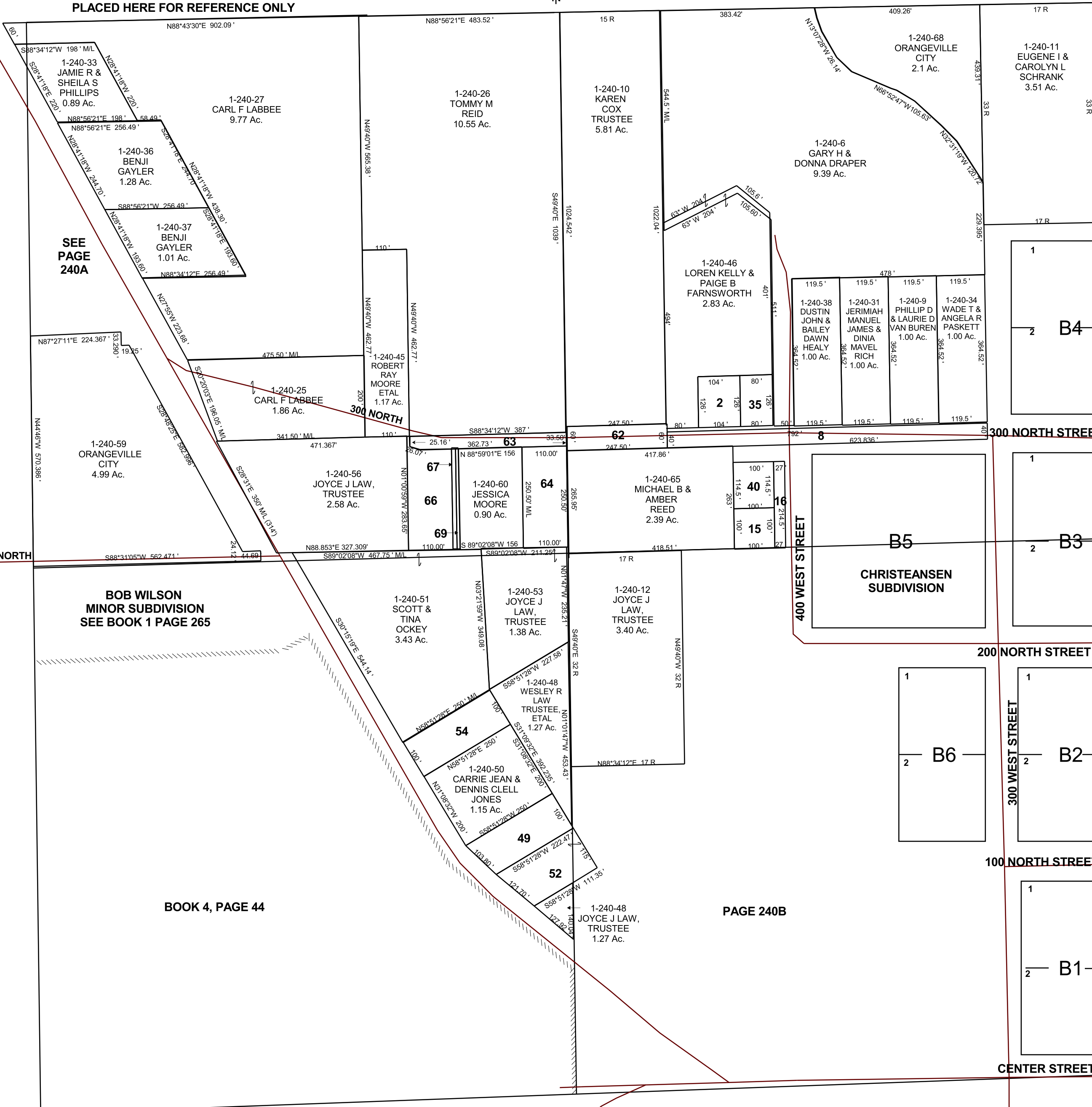
ORANGEVILLE

NE/4 SECTION 30, T 18 S, R 8 E S.L.B. & M.

BOOK 1 PAGE 240
SCALE: 1" = 200'
DECEMBER 21, 2022

THIS PLAT IS MADE SOLELY FOR THE PURPOSE
OF ASSISTING IN LOCATING THE LAND, AND
THE RECORDER ASSUMES NO LIABILITY FOR
VARIATIONS, IF ANY, WITH AN ACTUAL SURVEY.

THE BLOCKS ON THIS PAGE HAVE BEEN
PLACED HERE FOR REFERENCE ONLY



SEE
PAGE
240A

BOB WILSON
MINOR SUBDIVISION
SEE BOOK 1 PAGE 265

BOOK 4, PAGE 44

PAGE 240B

- 1-240-2
P GARY &
MARQUITA
COX
0.3 Ac.
- 1-240-8
ORANGEVILLE
CITY
0.68 Ac.
- 1-240-15
CYNTHIA
GRANT,
TRUSTEE
0.23 Ac.
- 1-240-16
ORANGEVILLE
CITY
0.13 Ac.
- 1-240-35
JUSTAN P
HINKINS
0.23 Ac.
- 1-240-40
CYNTHIA
GRANT,
TRUSTEE
0.26 Ac.
- 1-240-49
HAYLIE J
CLOWARD
& BRADY J
RAMONE
0.54 Ac.
- 1-240-52
CRAIG L ROWLEY,
TRUSTEE
0.53 Ac.
- 1-240-54
JASON G &
JENNIFER
THOMAS
0.57 Ac.
- 1-240-57
WESLEY R
LAW,
TRUSTEE,
ETAL
0.32 Ac.
- 1-240-61
WESLEY R &
JOYCE J
LAW,
TRUSTEES
0.32 Ac.
- 1-240-62
ORANGEVILLE CITY
0.34 Ac.
- 1-240-63
ORANGEVILLE CITY
0.30 Ac.
- 1-240-64
ZACARIAH &
STEPHANIE
GASSER
0.63 Ac.
- 1-240-66
GARY D &
STORMEE K
BENNET
0.63 Ac.
- 1-240-67
GARY D &
STORMEE K
BENNET
0.06 Ac.
- 1-240-69
GARY D &
STORMEE K
BENNET
0.04 Ac.

1-240
30-18S-08E