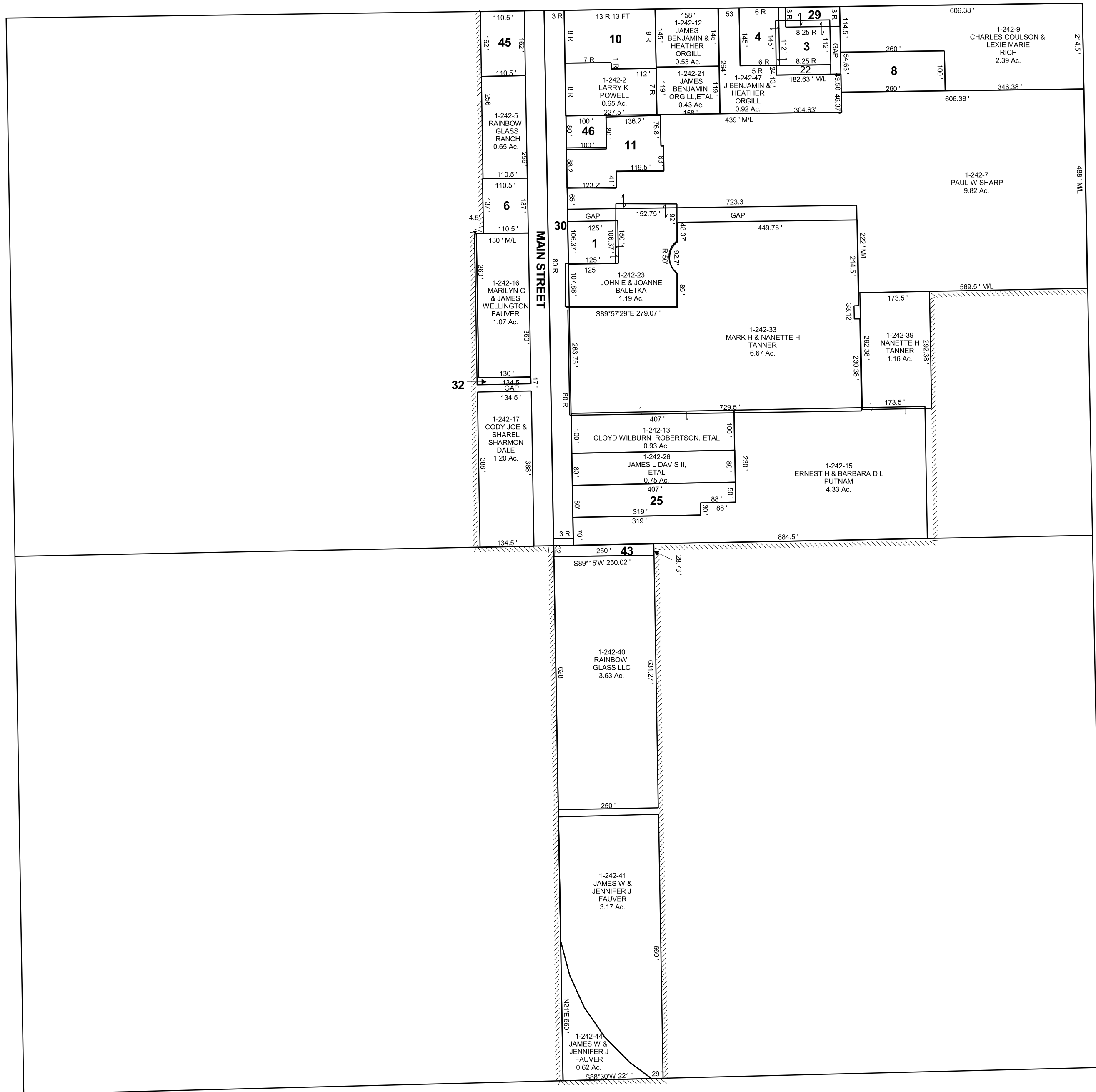


ORANGEVILLE

NW/4 SECTION 32, T 18 S, R 08 E S.L.B. & M.

BOOK 1 PAGE 242  
SCALE: 1" = 200'  
AUGUST 22, 2018

THIS PLAT IS MADE SOLELY FOR THE PURPOSE  
OF ASSISTING IN LOCATING THE LAND, AND  
THE RECORDER ASSUMES NO LIABILITY FOR  
VARIATIONS, IF ANY, WITH AN ACTUAL SURVEY.



- 1-242-1  
ARTHUR K &  
LORI A  
LYON  
0.31 Ac.
- 1-242-3  
CURT A  
CURTIS  
0.35 Ac.
- 1-242-4  
JESSE W  
& MYRA  
FREEMAN  
0.33 Ac.
- 1-242-6  
RANDY JOHN  
BEHLING  
0.35 Ac.
- 1-242-8  
CHARLES COULSON  
& LEXIE MARIE  
RICH  
0.60 Ac.
- 1-242-10  
GARDNER CATTLE  
COMPANY III, LLC  
0.73 Ac.
- 1-242-11  
DUSTIN J &  
KORTNEY J  
MORTON  
0.68 Ac.
- 1-242-22  
CURT A  
CURTIS  
0.075 Ac.
- 1-242-25  
JUDY DEERING &  
DAVID A MORGAN  
0.69 Ac.
- 1-242-29  
ORANGEVILLE  
CITY  
0.15 Ac.
- 1-242-30  
EMERY  
COUNTY  
1.5 Ac.
- 1-242-32  
RAINBOW  
GLASS RANCH  
0.09 Ac.
- 1-242-43  
ERNEST H &  
BARBARA D L  
PUTNAM  
0.16 Ac.
- 1-242-45  
DUSTIN &  
KRISTEN  
HINKINS  
0.41 Ac.
- 1-242-46  
KORTNEY &  
DUSTIN  
MORTON  
0.18 Ac.