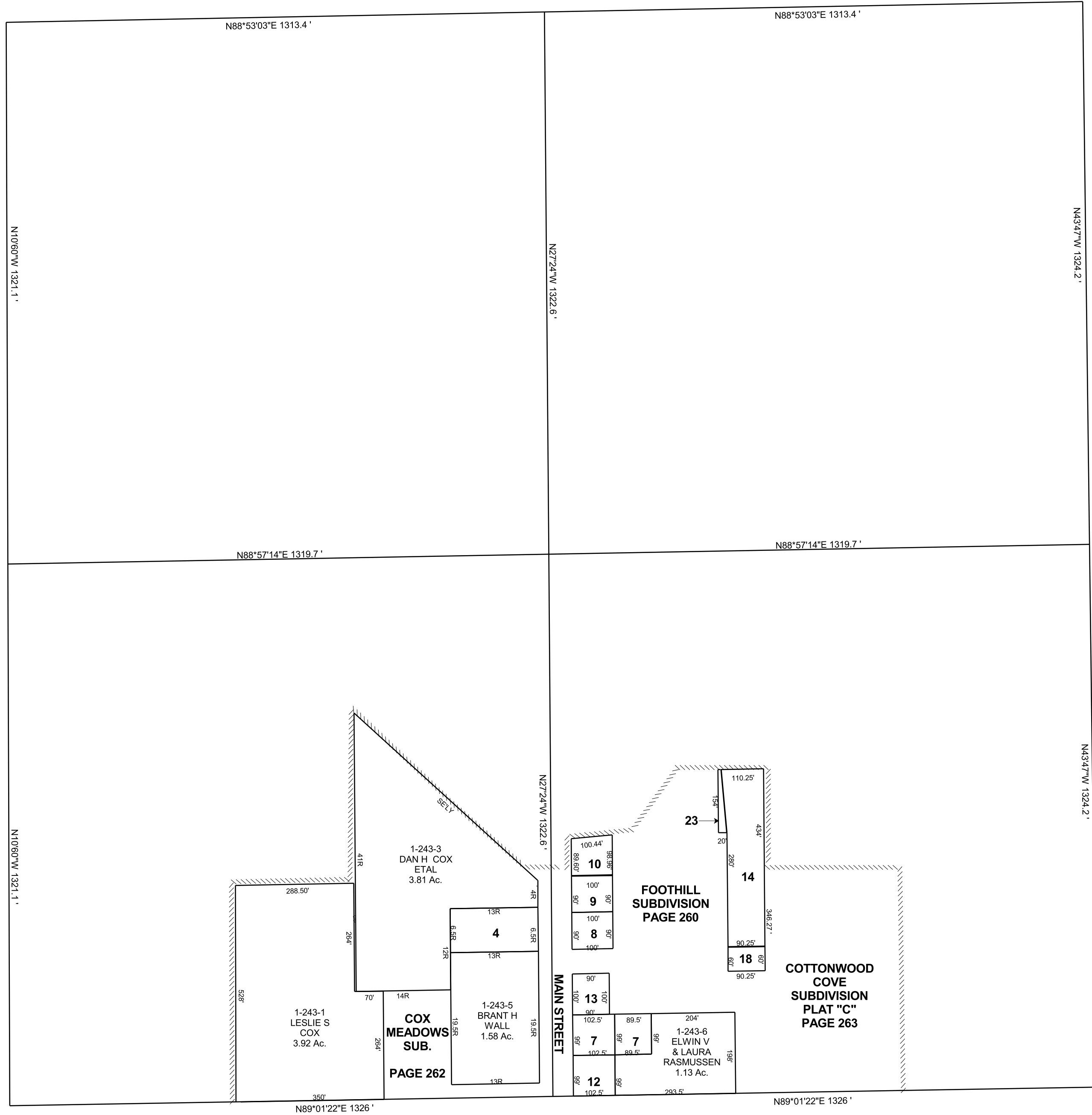


ORANGEVILLE

SW/4 SECTION 20, T 18 S, R 08 E S.L.B. & M.

THIS PLAT IS MADE SOLELY FOR THE PURPOSE
OF ASSISTING IN LOCATING THE LAND, AND
THE RECORDER ASSUMES NO LIABILITY FOR
VARIATIONS, IF ANY, WITH AN ACTUAL SURVEY.



- 1-243-4
DUSTON &
TINA
SERVICE
0.53 Ac.
- 1-243-7
V ERNON A
& SUSAN K
CHILDS
0.44 Ac.
- 1-243-8
ALLEN P &
COLLEEN H
CHILDS
0.21 Ac.
- 1-243-9
KIRK C &
LANA JEAN
MCQUIVEY
0.21 Ac.
- 1-243-10
LARRY
& DORIAN
HEATON
0.22 Ac.
- 1-243-12
ELWIN V &
LAURA
RASMUSSEN
0.23 Ac.
- 1-243-13
V & S
PROPERTIES,
LLC
0.21 Ac.
- 1-243-14
JESSIE L &
RHIANNON J
REID
0.93 Ac.
- 1-243-18
ORANGEVILLE
CITY
0.12 Ac.
- 1-243-23
FLORO S
& ROBYN L
SAUPAN
0.05 Ac.