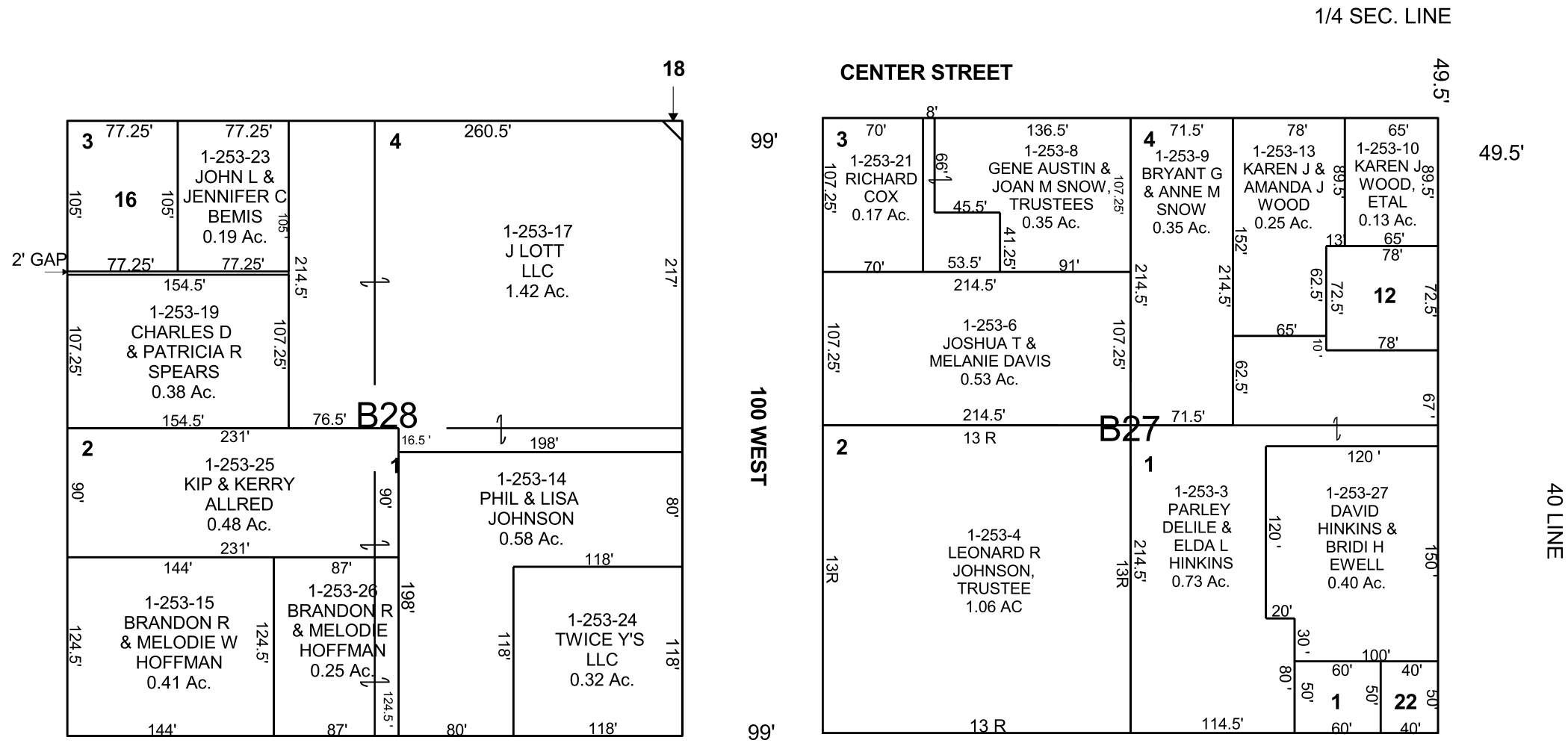


ORANGVILLE
 NW/4 SW/4 SECTION 29, T 18 S, R 08 E S.L.B. & M.
 PLAT "A"

THIS PLAT IS MADE SOLELY FOR THE PURPOSE
 OF ASSISTING IN LOCATING THE LAND, AND
 THE RECORDER ASSUMES NO LIABILITY FOR
 VARIATIONS, IF ANY, WITH AN ACTUAL SURVEY.



- 1-253-1
STEVEN KENNETH
& SUSAN K BELL
0.07 Ac.
- 1-253-7
GENE AUSTIN &
JOAN M SNOW,
TRUSTEES
0.06 Ac.
- 1-253-12
PARLEY DELILE &
ELDA HINKINS
0.13 Ac.
- 1-253-16
ETHAN T
HURDSMAN
0.19 Ac.
- 1-253-18
DAUGHTERS OF
UTAH PIONEERS
0.002 Ac.
- 1-253-22
STEVEN K &
SUSAN K
BELL
0.05 Ac.
- 1-253-26
SCOTT M &
BOBBI LYNN
OCKEY
0.25 Ac.