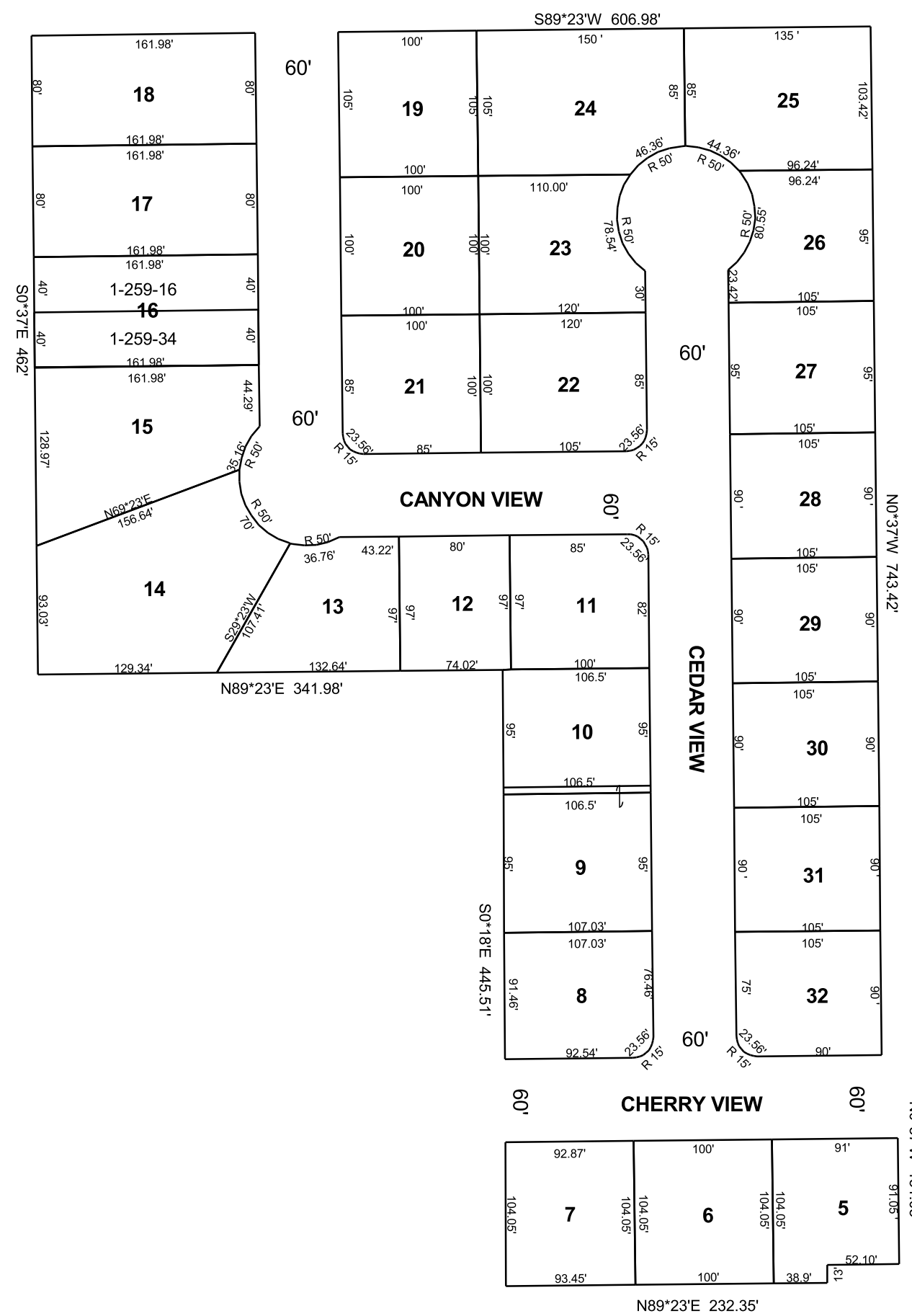


COTTONWOOD COVE SUBDIVISION
 NE/4 NW/4 SECTION 29, T 18 S, R 08 E S.L.B. & M.
 PLAT "B"
 AMENDED

THIS PLAT IS MADE SOLELY FOR THE PURPOSE
 OF ASSISTING IN LOCATING THE LAND, AND
 THE RECORDER ASSUMES NO LIABILITY FOR
 VARIATIONS, IF ANY, WITH AN ACTUAL SURVEY.



270' ———
 NE COR, NE1/4
 NW1/4, SEC. 29

1-259-5 ROBERT A & ZELDA A ROJAS 0.20 Ac.	1-259-15 SECRETARY OF HOUSING & URBAN DEVELOPMENT 0.36 Ac.	1-259-25 JACK D & DIANNE BUTLER 0.31 Ac.
1-259-6 CORD & TATUM HANSEN 0.24 Ac.	1-259-16 SCOTT ROSS & HEATHER ANN STILSON 0.15 Ac.	1-259-26 MICHAEL C & SHELLY G SCOW 0.20 Ac.
1-259-7 DENNIS WAYNE & ELSIE W TUTTLE 0.22 Ac.	1-259-17 MISTYNA & COLE SORENSEN 0.30 Ac.	1-259-27 LEO JAY & GARELDINE S WRIGHT 0.23 Ac.
1-259-8 MICHAEL CORT WILLIAMS 0.22 Ac.	1-259-18 CLINTON L & NATALIE B OLSEN 0.30 Ac.	1-259-28 ROGER S & BONNIE JEAN SWENSON 0.22 Ac.
1-259-9 ROBERT C ONSTOTT 0.25 Ac.	1-259-19 TERRANCE R SITTERUD 0.24 Ac.	1-259-29 BLISS R & NOLA T MEAD 0.22 Ac.
1-259-10 RICHARD J & FRANCES F COESENS 0.22 Ac.	1-259-20 DAVID J & JOAN M BRINKERHOFF 0.23 Ac.	1-259-30 ARCHIE L & MARY E BAILEY 0.22 Ac.
1-259-11 BRANDON & KRISTINE JENSEN 0.22 Ac.	1-259-21 NICK & JAMELE RHOTEN 0.23 Ac.	1-259-31 THOMAS K & MARGARET G BELL 0.22 Ac.
1-259-12 DAVID & KIMBERLY TURNER 0.18 Ac.	1-259-22 ARTHUR & SHARYN HUGHES 0.27 Ac.	1-259-32 BRAD & NANCY C ORGILL 0.22 Ac.
1-259-13 ALEXANDER J O'NEIL 0.23 Ac.	1-259-23 THOMAS ALLAN & SHIRLEY BALTZER 0.25 Ac.	1-259-34 MARC K & KORINDA C STILSON 0.15 Ac.
1-259-14 JOHN H & MINDEE NICHOLSON 0.43 Ac.	1-259-24 JOHN C & ALLISHA R HUGHES 0.35 Ac.	